



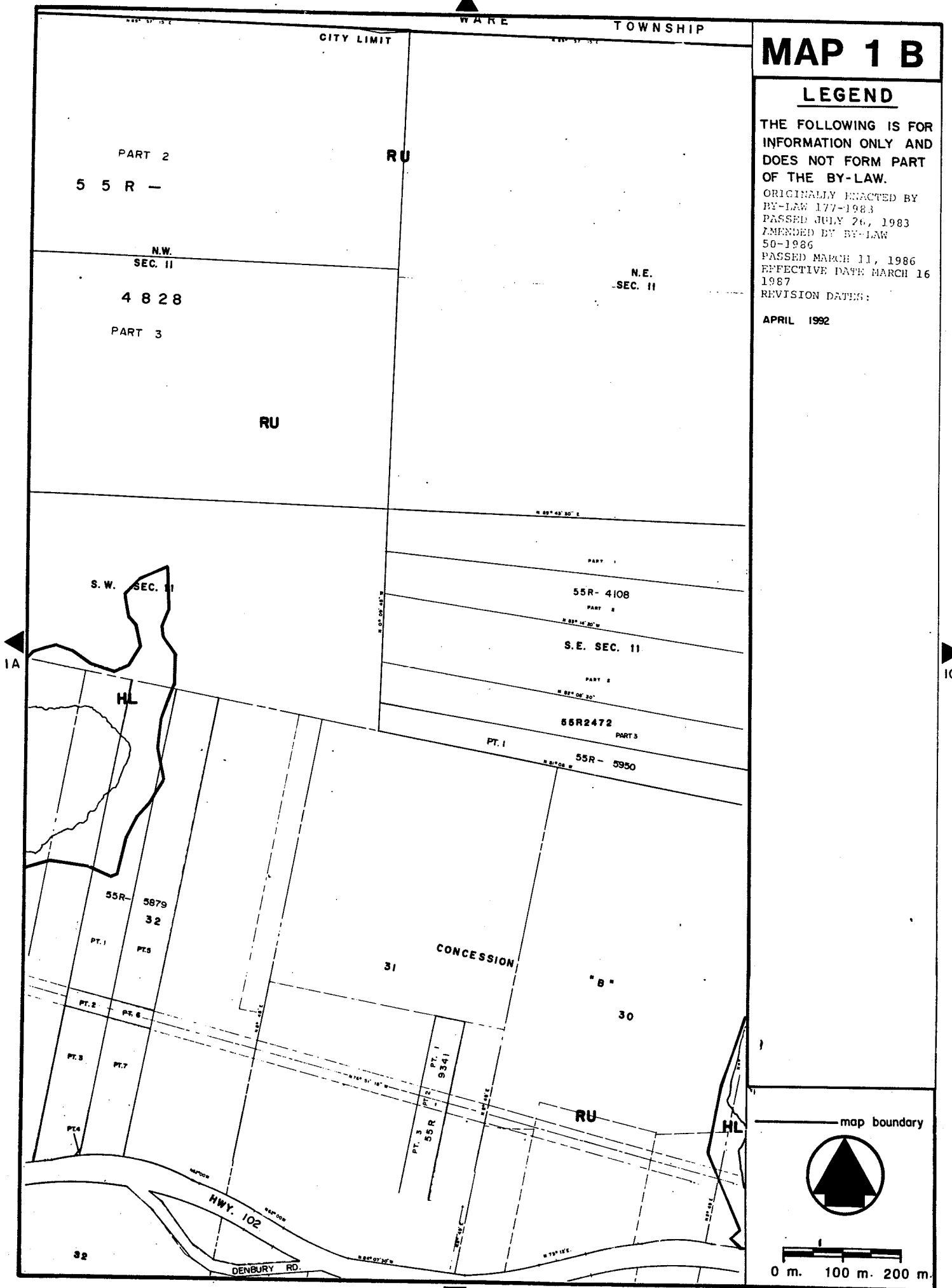
# MAP 1 B

## LEGEND

THE FOLLOWING IS FOR INFORMATION ONLY AND DOES NOT FORM PART OF THE BY-LAW.

ORIGINALLY ENACTED BY BY-LAW 177-1983  
PASSED JULY 26, 1983  
AMENDED BY BY-LAW 50-1986  
PASSED MARCH 11, 1986  
EFFECTIVE DATE MARCH 16 1987  
REVISION DATES:

APRIL 1992



# MAP 1 C

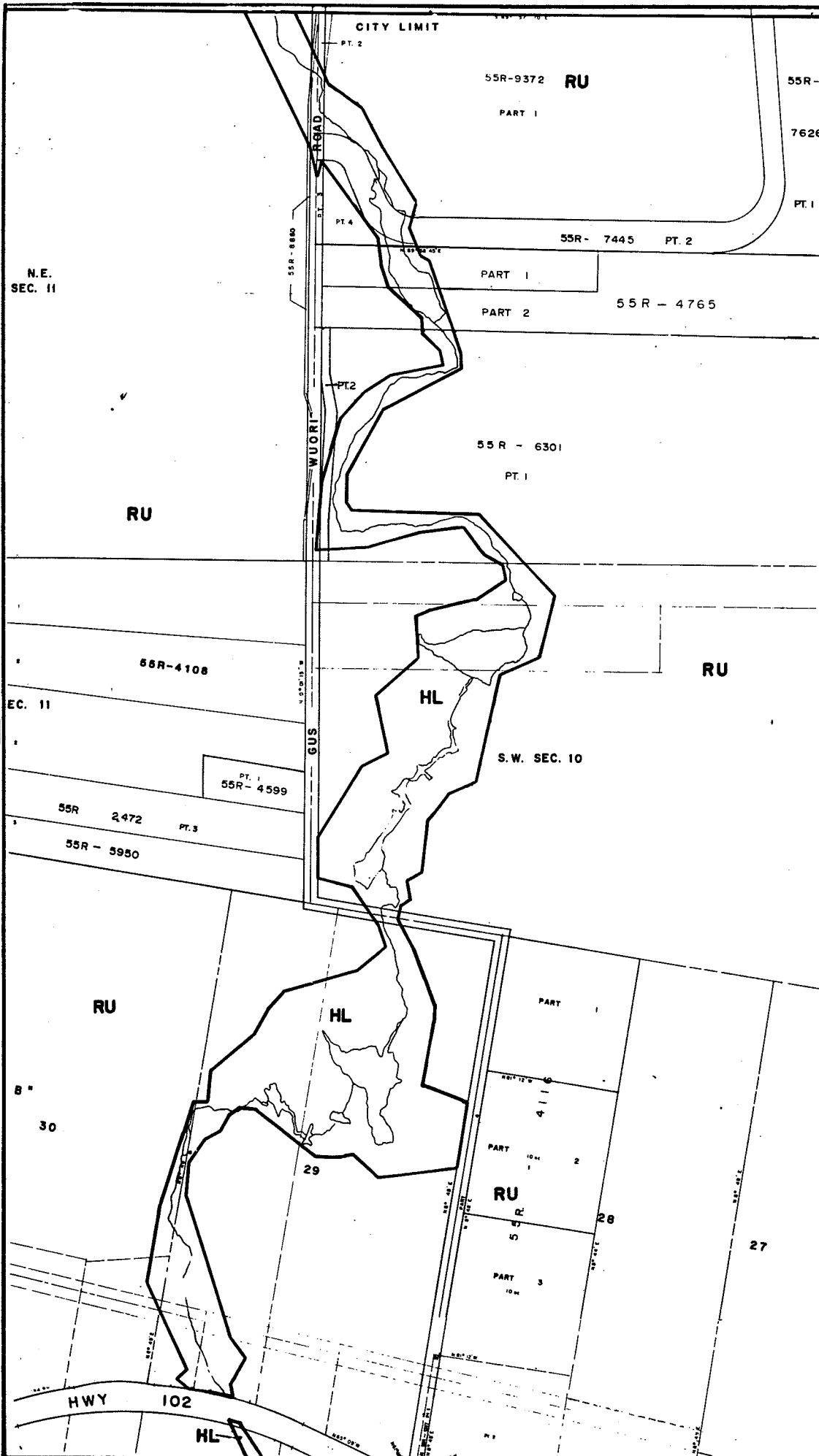
## LEGEND

THE FOLLOWING IS FOR INFORMATION ONLY AND DOES NOT FORM PART OF THE BY-LAW.

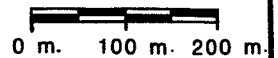
ORIGINALLY ENACTED BY BY-LAW 177-1983  
 PASSED JULY 26, 1983  
 AMENDED BY BY-LAW 50-1986  
 PASSED MARCH 11, 1986  
 EFFECTIVE DATE MARCH 16 1987

REVISION DATES:

APRIL 1992



map boundary

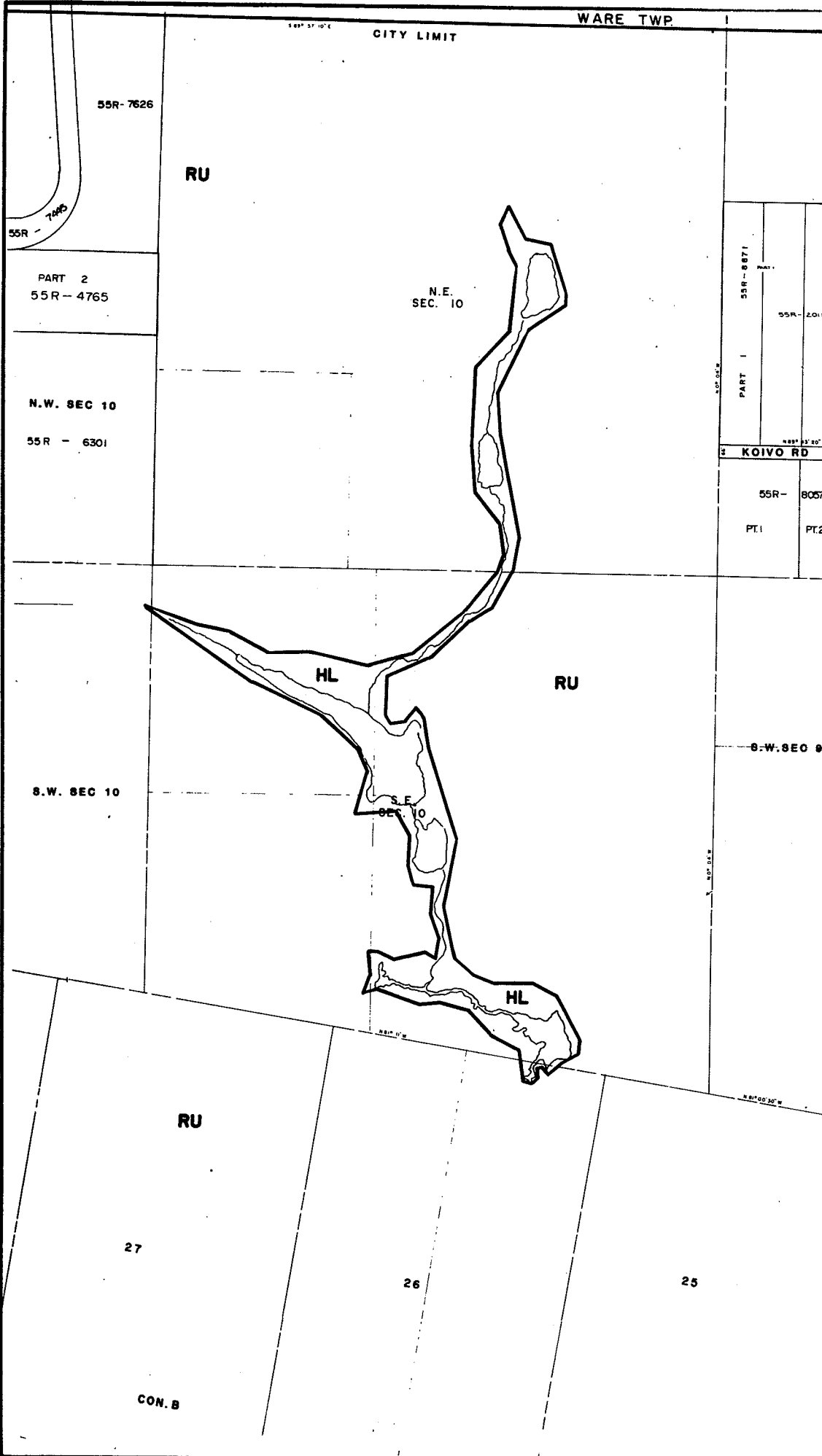


# MAP 1 D

## LEGEND

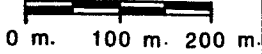
THE FOLLOWING IS FOR INFORMATION ONLY AND DOES NOT FORM PART OF THE BY-LAW.

ORIGINALLY ENACTED  
BY BY-LAW 177-1983  
PASSED JULY 26, 1983  
EFFECTIVE DATE MARCH 16, 1987  
REVISION DATES:  
APRIL 1992



BY-LAW 177-1983  
PASSED THIS 26<sup>th</sup> DAY OF  
JULY 1983

map boundary



# MAP 1 E

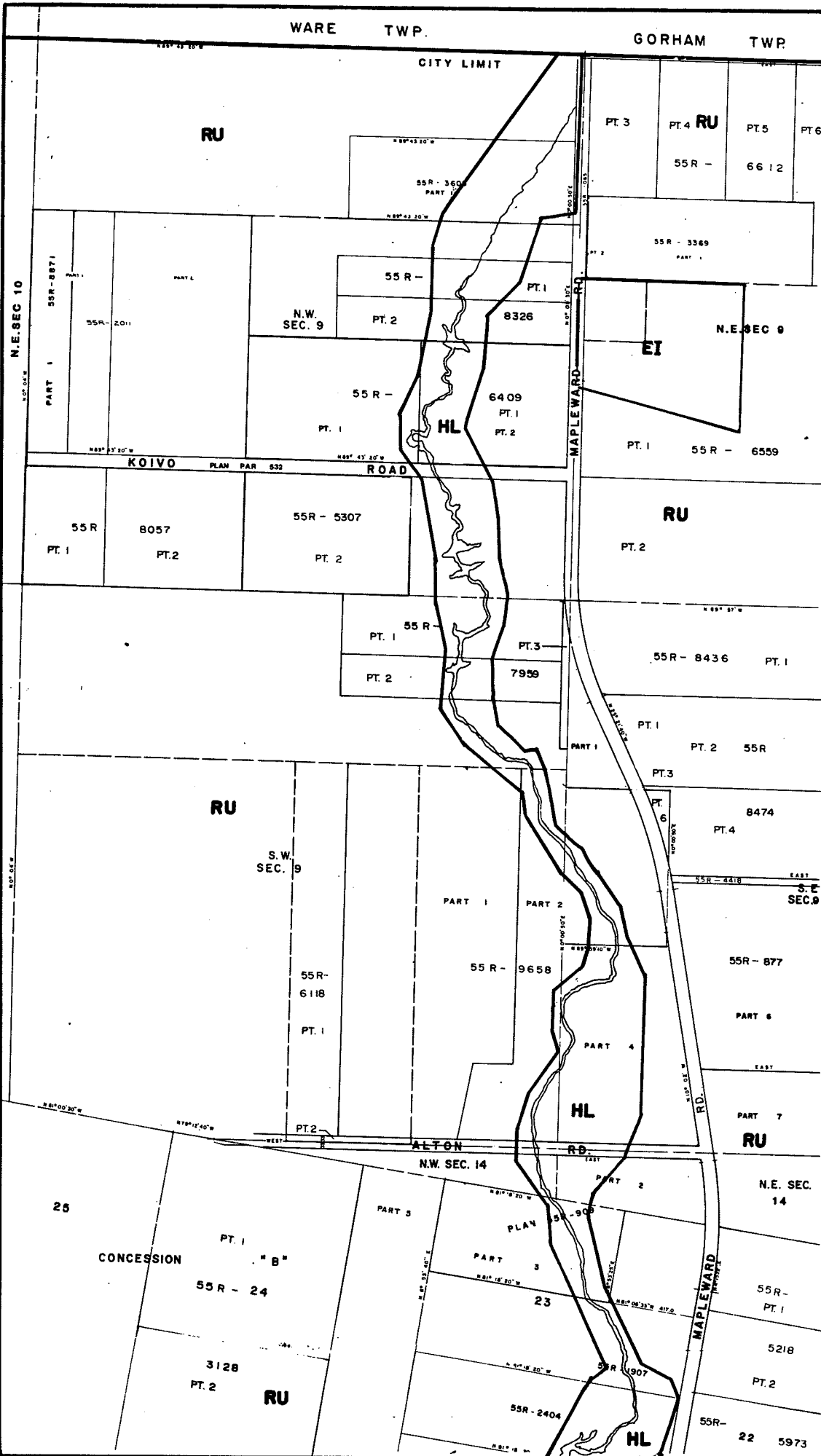
## LEGEND

THE FOLLOWING IS FOR INFORMATION ONLY AND DOES NOT FORM PART OF THE BY-LAW.

ORIGINALLY ENACTED BY BY-LAW 177-1983  
PASSED JULY 26, 1983  
AMENDED BY BY-LAW 50-1986  
PASSED MARCH 11, 1986  
EFFECTIVE DATE MARCH 16 1987

REVISION DATES:

APRIL 1992



N.E. SEC. 10

N.E. SEC. 9

S.W. SEC. 9

N.W. SEC. 14

N.E. SEC. 14

S.E. SEC. 9

map boundary



0 m. 100 m. 200 m.

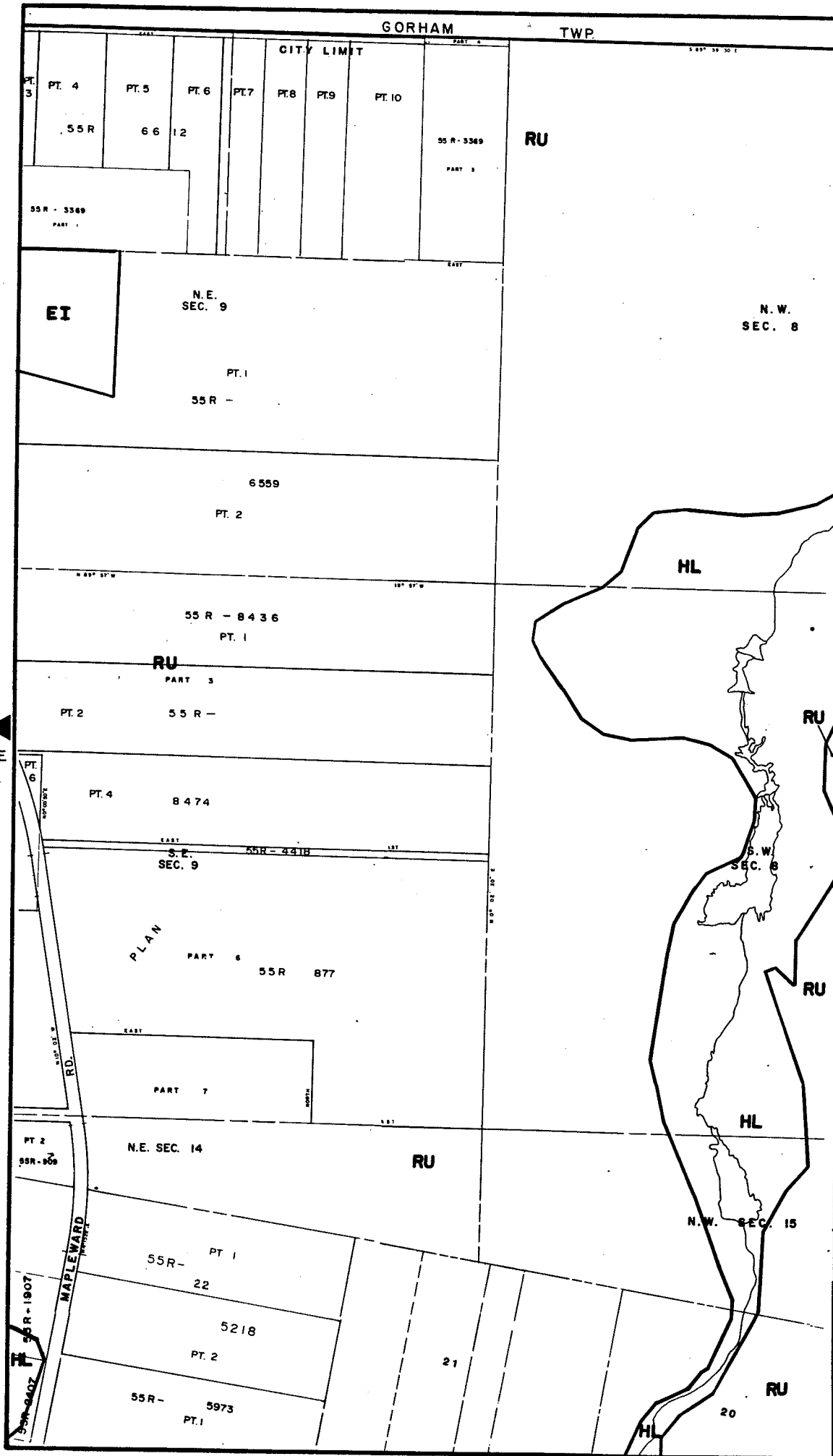
# MAP 1 F

## LEGEND

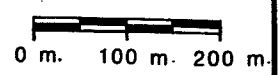
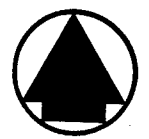
THE FOLLOWING IS FOR INFORMATION ONLY AND DOES NOT FORM PART OF THE BY-LAW.

ORIGINALLY ENACTED BY BY-LAW 177-1983  
PASSED JULY 26, 1983  
AMENDED BY BY-LAW 50-1986  
PASSED MARCH 11, 1986  
EFFECTIVE DATE MARCH 16 1987  
REVISION DATES:

APRIL 1992



map boundary



GORHAM

TWP.

# MAP 1 G

## LEGEND

THE FOLLOWING IS FOR INFORMATION ONLY AND DOES NOT FORM PART OF THE BY-LAW.

ORIGINALLY ENACTED BY BY-LAW 177-1983  
PASSED JULY 26, 1983  
AMENDED BY BY-LAW 50-1986  
PASSED MARCH 11, 1986  
EFFECTIVE DATE MARCH 16 1987

REVISION DATES:

CITY LIMIT

55 R - 4024  
PART 1

RU

N.W. SEC 8

N.E. SEC. 8

PART 1

55 R -

2528

N.W. SEC. 7

HL

HL

S.W. SEC 8

S.E. SEC. 8

S.W. SEC 7

HL

EI

HL

RU

N.W. SEC 16

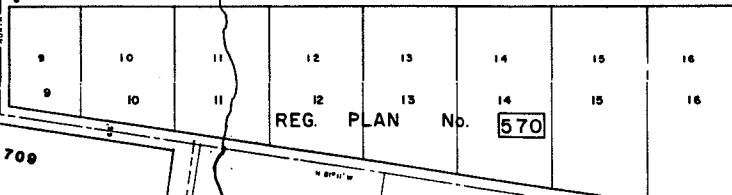
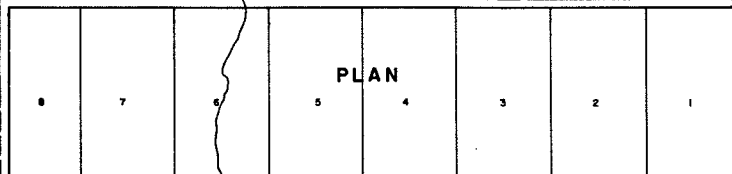
PLAN

N.W. SEC 16

map boundary



0 m. 100 m. 200 m.



REG. PLAN No. 570

20 CON B.

PLAN 700

12

18 CON B

GORHAM  
CITY LIMIT

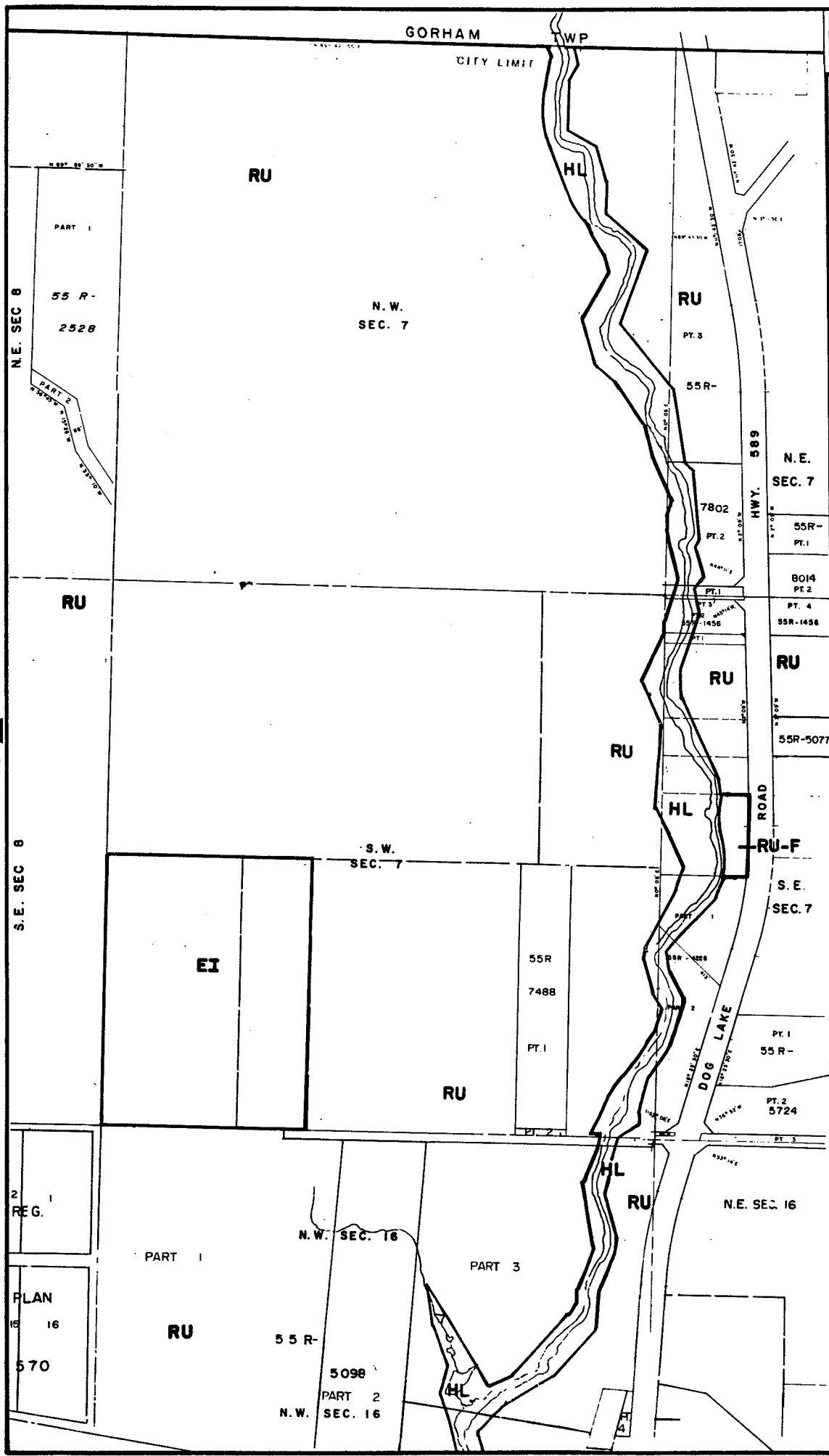
# MAP 1 H

## LEGEND

THE FOLLOWING IS FOR INFORMATION ONLY AND DOES NOT FORM PART OF THE BY-LAW.

ORIGINALLY ENACTED BY BY-LAW 177-1983  
PASSED JULY 26, 1983  
AMENDED BY BY-LAW 50-1986  
PASSED MARCH 11, 1986  
EFFECTIVE DATE MARCH 16 1987  
REVISION DATES:

APRIL 1992



1 G

1 I

2  
REG.  
PLAN  
18 16  
570

map boundary



0 m. 100 m. 200 m.

2 H



CITY LIMIT

## LEGEND

THE FOLLOWING IS FOR INFORMATION ONLY AND DOES NOT FORM PART OF THE BY-LAW. ORIGINALLY ENACTED BY BY-LAW 177-1983 PASSED JULY 26, 1983 AMENDED BY BY-LAW 50-1986 PASSED MARCH 11, 1986 EFFECTIVE DATE MARCH 16 1987 REVISION DATES:

APRIL 1992

N. W. SEC. 6

RU

N. E. SEC. 7

RU

N. W. SEC. 7

RU

S. W. SEC. 7

HL

RU-F

S. E. SEC. 7

S. W. SEC. 6

RU

55R - 5077 PT. 1

55R - PT. 1

PT. 2 8014

PART 4 55 R - 1456

PART 1	PT. 6	PART 1 - 81	PT. 7
--------	-------	-------------	-------

55 R - 2610

PART 1 PT. 5 PART 2 - 34 PART 8

5724

55 R - 4318

PART 1 PART 2 PT. 1 PT. 2

55 R - 6915

55R - 5090 PT. 1

MELBOURNE

55R - 4573 PART 2

N. E. SEC. 16

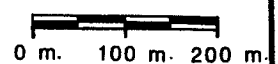
RU

HL

N. W. SEC. 17

3R - 5098

map boundary



GORHAM TWP.

# MAP 1 J

## LEGEND

THE FOLLOWING IS FOR INFORMATION ONLY AND DOES NOT FORM PART OF THE BY-LAW.

ORIGINALLY ENACTED  
BY BY-LAW 177-1983  
PASSED JULY 26, 1983  
EFFECTIVE DATE MARCH 16, 1987  
REVISION DATES:  
APRIL 1992

CITY LIMIT

RU

N.W.  
SEC. 6

RU

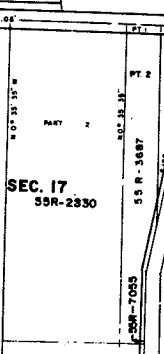
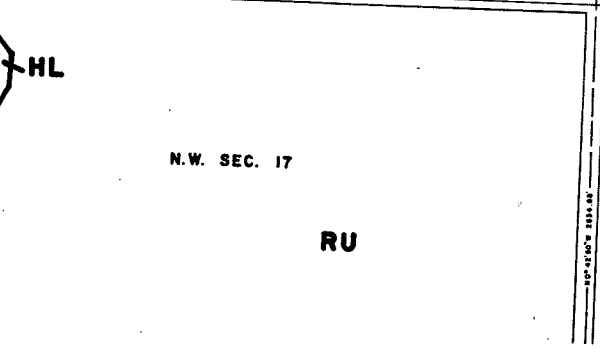
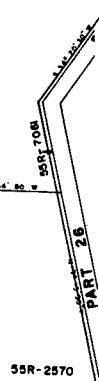
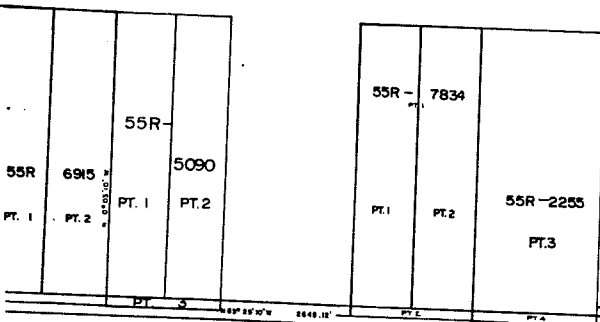
N.E.  
SEC. 6

RU

S.W.  
SEC. 6

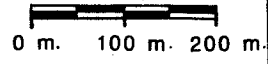
RU

S.E.  
SEC. 6



BY-LAW 177-1983  
PASSED THIS 26<sup>th</sup> DAY OF  
JULY 1983

map boundary



# MAP 1 K

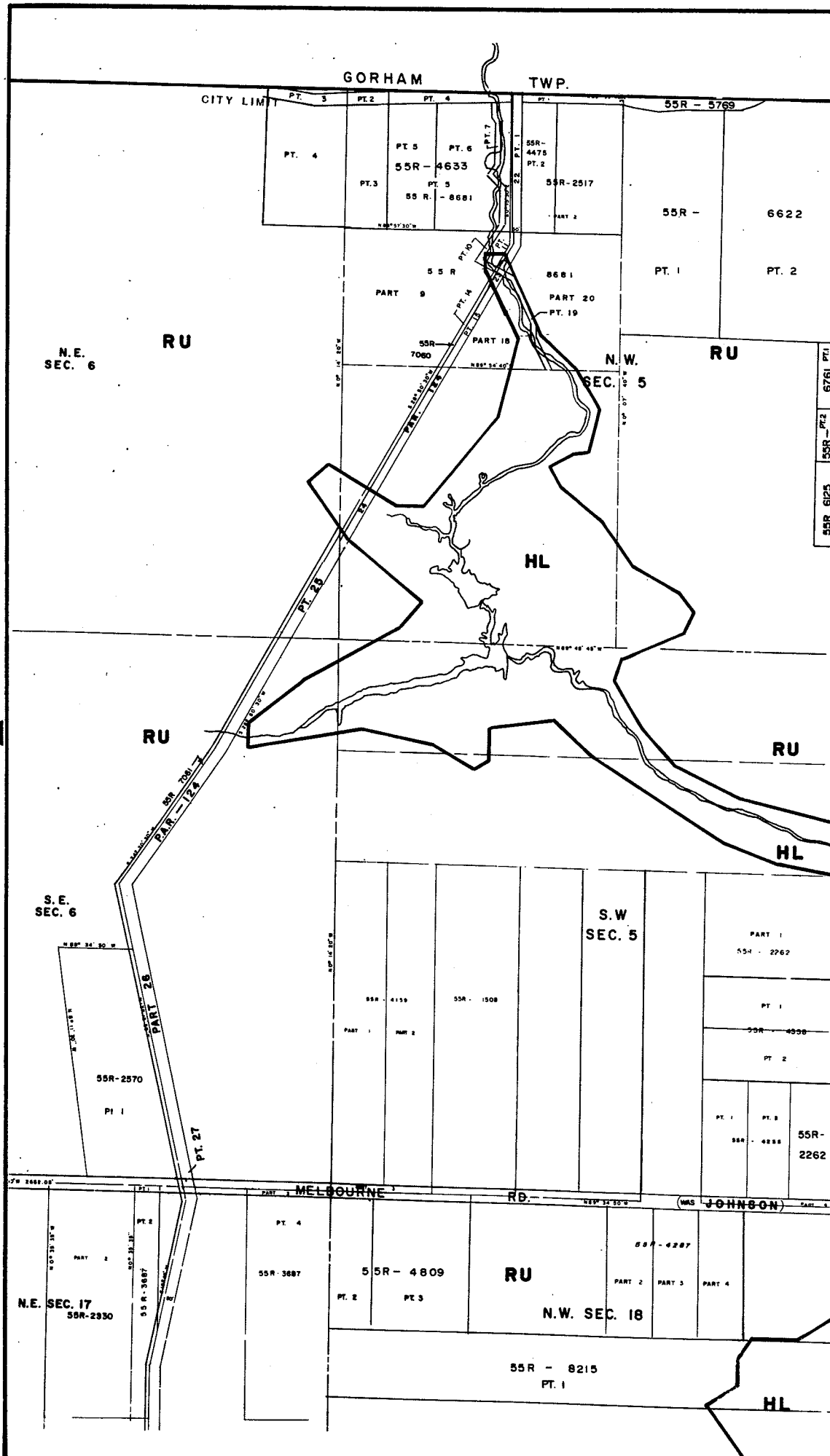
## LEGEND

THE FOLLOWING IS FOR INFORMATION ONLY AND DOES NOT FORM PART OF THE BY-LAW.

ORIGINALLY ENACTED BY BY-LAW 177-1983  
 PASSED JULY 26, 1983  
 AMENDED BY BY-LAW 50-1986  
 PASSED MARCH 11, 1986  
 EFFECTIVE DATE MARCH 16 1987

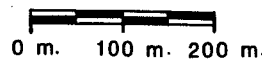
REVISION DATES:

APRIL 1992



55R-625  
 55R-PT.2  
 6761 PT.1

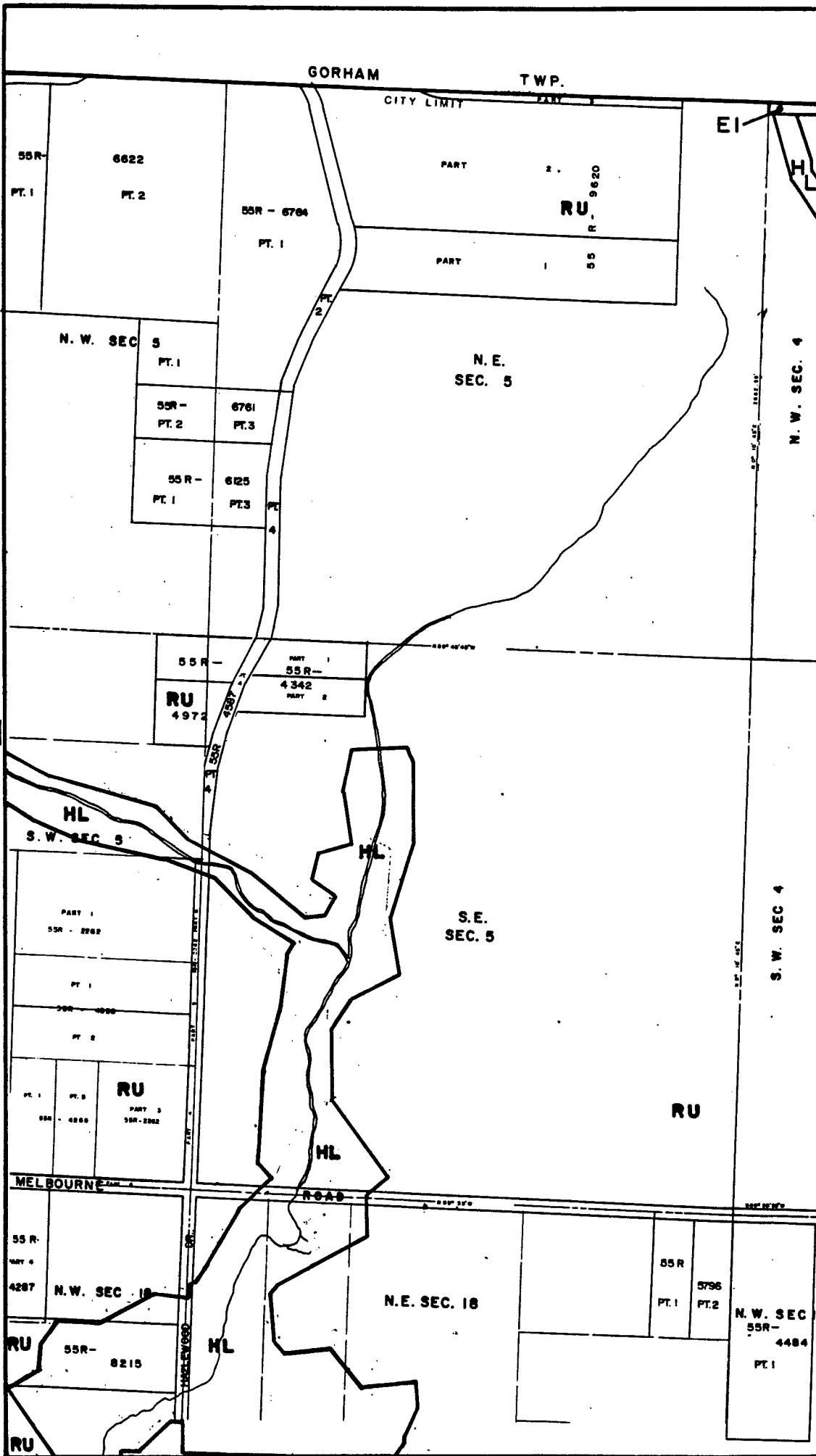
map boundary



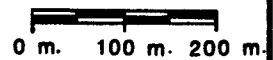
# MAP 1 L

## LEGEND

THE FOLLOWING IS FOR INFORMATION ONLY AND DOES NOT FORM PART OF THE BY-LAW. ORIGINALY ENACTED BY BY-LAW 177-1983 PASSED JULY 26, 1983 AMENDED BY BY-LAW 50-1986 PASSED MARCH 11, 1986 EFFECTIVE DATE MARCH 16 1987 REVISION DATES:  
 APRIL 1992  
 AUGUST 2001



map boundary



# MAP 1 M

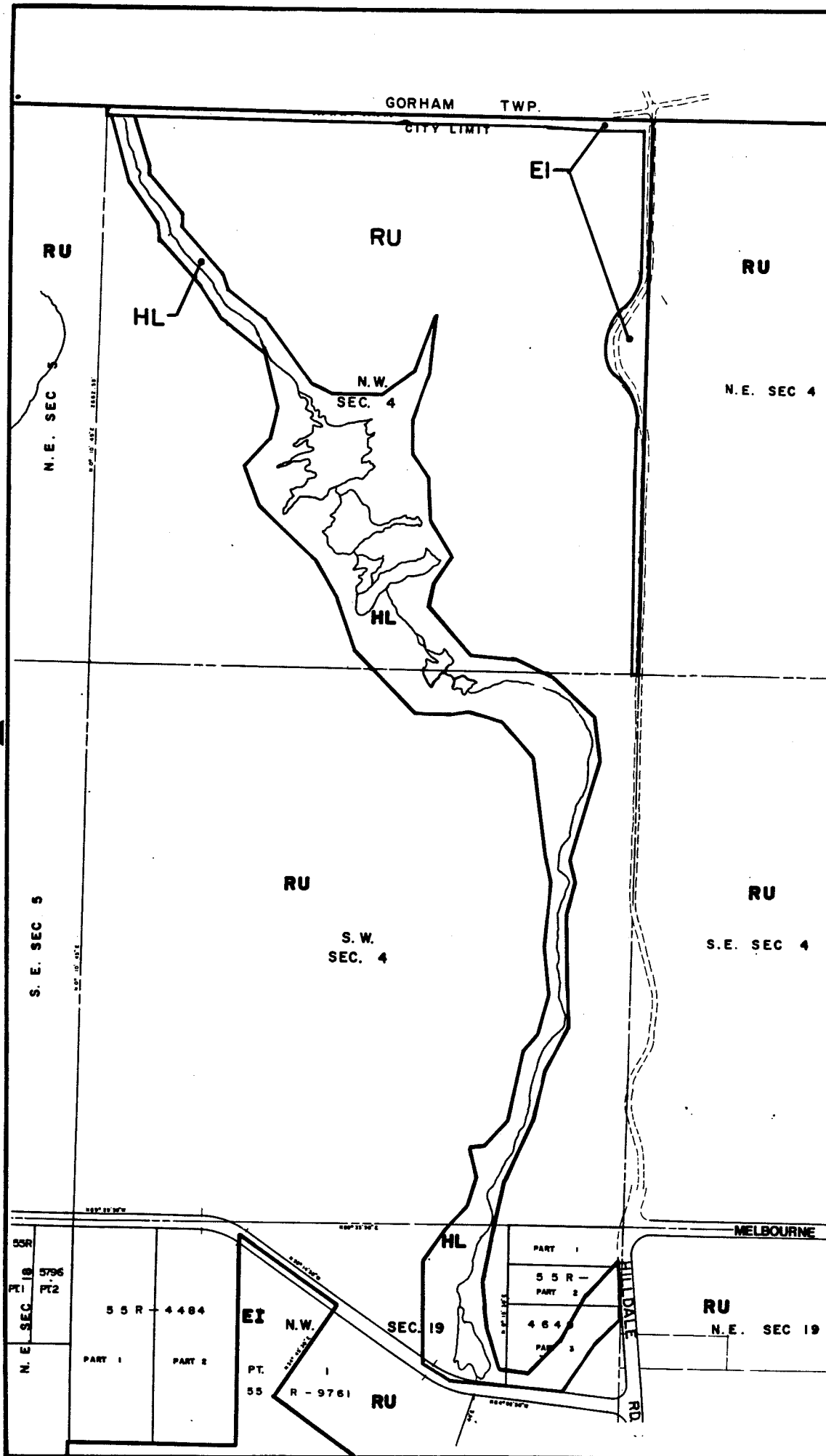
## LEGEND

THE FOLLOWING IS FOR INFORMATION ONLY AND DOES NOT FORM PART OF THE BY-LAW.

ORIGINALLY ENACTED  
 BY BY-LAW 177-1983  
 PASSED JULY 26, 1983  
 EFFECTIVE DATE MARCH 16, 1987  
 REVISION DATES:

APRIL 1992  
 AUGUST 2001

BY-LAW 177-1983  
 PASSED THIS 26<sup>th</sup> DAY OF  
JULY 1983



— map boundary



0 m. 100 m. 200 m.

# MAP 1 N

## LEGEND

THE FOLLOWING IS FOR INFORMATION ONLY AND DOES NOT FORM PART OF THE BY-LAW. ORIGINALY ENACTED BY BY-LAW 177-1983 PASSED JULY 26, 1983 EFFECTIVE DATE MARCH 16, 1987 REVISION DATES: AUGUST 1987 APRIL 1992 AUGUST 2000

G O R H A M T W P.

CITY LIMIT

PART 3

PART 1

PART 2

55 R

9710

55R

8233

RU

NE. SEC. 4

RU

N.W. SEC. 3

EI

HL

HL  
S.W. SEC. 3

SE. SEC. 4

RU

55R 3007

RU

MELBOURNE (WAS JOHNSON) ROAD

55R - 7635  
PT. 1 PT. 2 PT. 3

RU 55 R - 4903  
PART 1 PART 2

N.E. SEC. 19

N.W. SEC. 20

BY-LAW 177-1983  
PASSED THIS 26<sup>th</sup> DAY OF  
JULY 1983

map boundary



0 m. 100 m. 200 m.

# MAP 10

## LEGEND

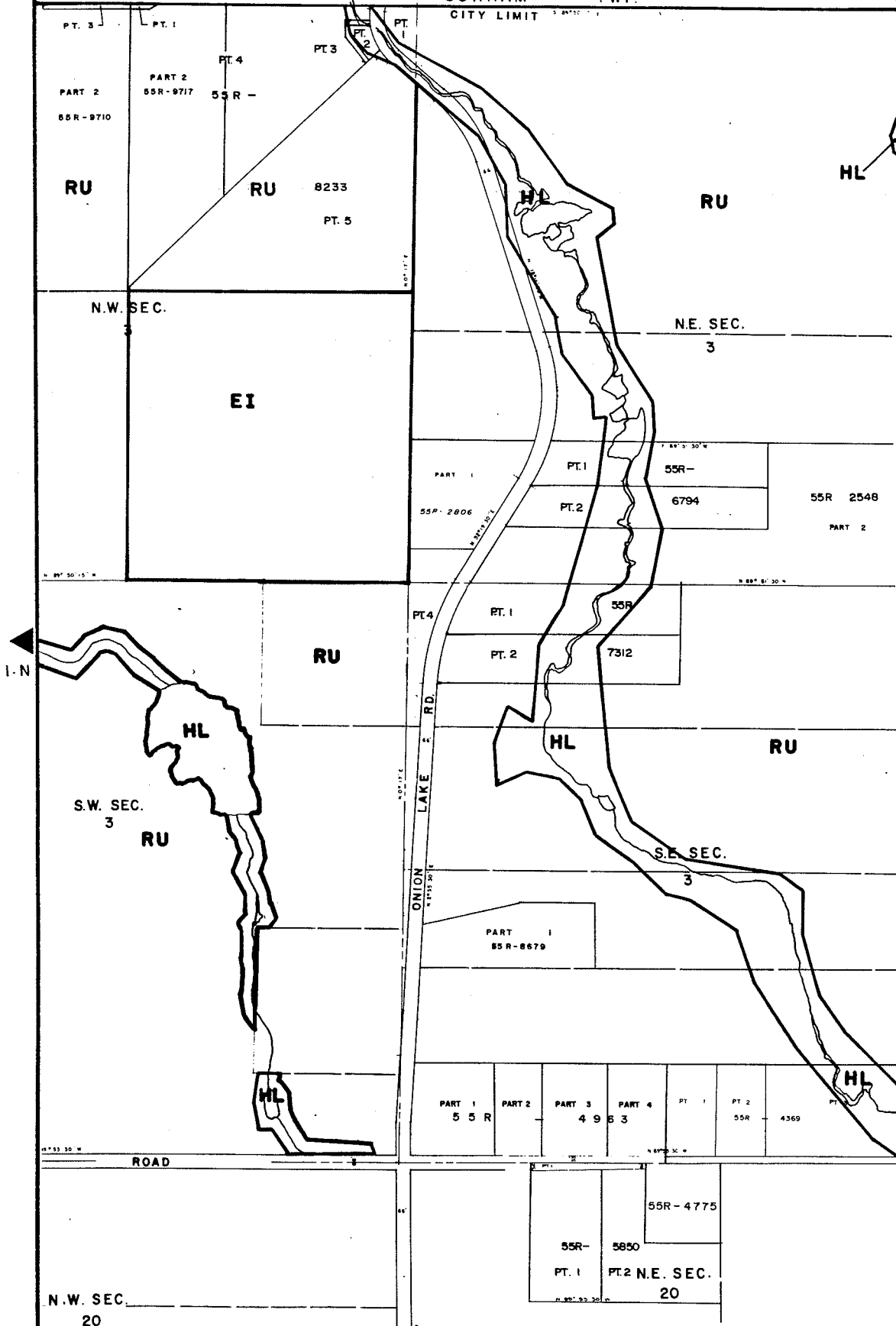
THE FOLLOWING IS FOR INFORMATION ONLY AND DOES NOT FORM PART OF THE BY-LAW.

ORIGINALLY ENACTED  
BY BY-LAW 177-1983  
PASSED JULY 26, 1983  
EFFECTIVE DATE MARCH 16, 1987

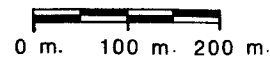
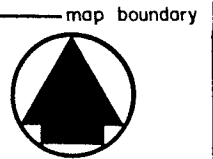
REVISION DATES:  
AUGUST 1987  
APRIL 1992  
AUGUST 2000

GORHAM TWP.

CITY LIMIT



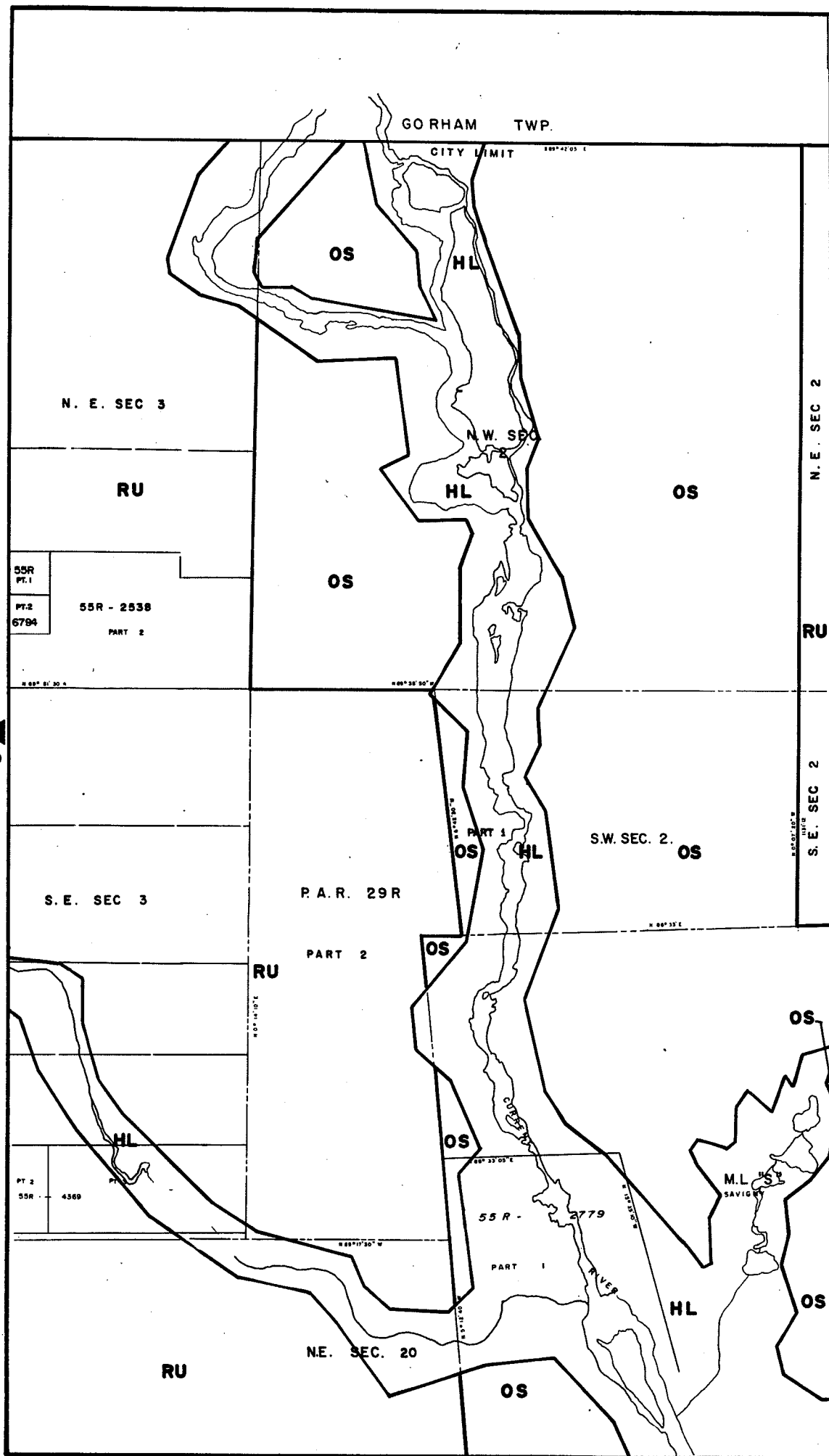
BY-LAW 177-1983  
PASSED THIS 26<sup>th</sup> DAY OF  
JULY 1983



# MAP 1 P


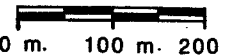
## LEGEND

THE FOLLOWING IS FOR INFORMATION ONLY AND DOES NOT FORM PART OF THE BY-LAW. ORIGINALLY ENACTED BY BY-LAW 177-1983. PASSED JULY 26, 1983. EFFECTIVE DATE MARCH 16, 1987. REVISION DATES: APRIL 1992



BY-LAW 177-1983  
 PASSED THIS 26<sup>th</sup> DAY OF  
 JULY 1983

— map boundary



# MAP 1 Q

G O R H A M T W P.

## LEGEND

THE FOLLOWING IS FOR INFORMATION ONLY AND DOES NOT FORM PART OF THE BY-LAW.  
ORIGINALLY ENACTED BY BY-LAW 177-1983 PASSED JULY 26, 1983 EFFECTIVE DATE MARCH 16, 1987.  
REVISION DATES:

CITY LIMIT

100° 30' 20" E

OS

RU

N. W. SEC 2

N. E. SEC. 2

N. W. SEC 1

I P

I R

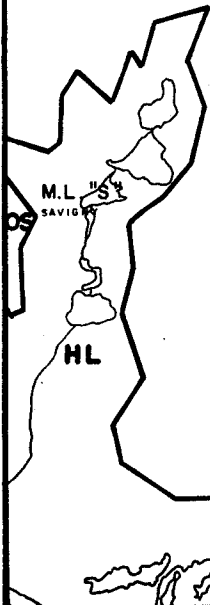
S. W. SEC 2

S. E. SEC. 2

S. W. SEC 1

OS

100° 25' E



BY-LAW 177-1983  
PASSED THIS 26<sup>th</sup> DAY OF  
JULY 1983.

map boundary



0 m. 100 m. 200 m.

# MAP 1 R

## LEGEND

THE FOLLOWING IS FOR INFORMATION ONLY AND DOES NOT FORM PART OF THE BY-LAW.

ORIGINALLY ENACTED BY BY-LAW 177-1983 PASSED JULY 26, 1983 EFFECTIVE DATE MARCH 16, 1987 REVISION DATES:

APRIL 1992

GORHAM

CITY LIMIT

RU

RU

HL

N.W. SEC. 1

N. E. SEC 1

HL

RU

S.W. SEC. 1

S. E. SEC 1

HL

HL

RU

M. L. "T"

M.L. "U"  
SAVIGNY

PT.3

55R

7459

PT.1

" V

M. L.

"

BY-LAW 177-1983  
PASSED THIS 26<sup>th</sup> DAY OF  
JULY 1983

map boundary



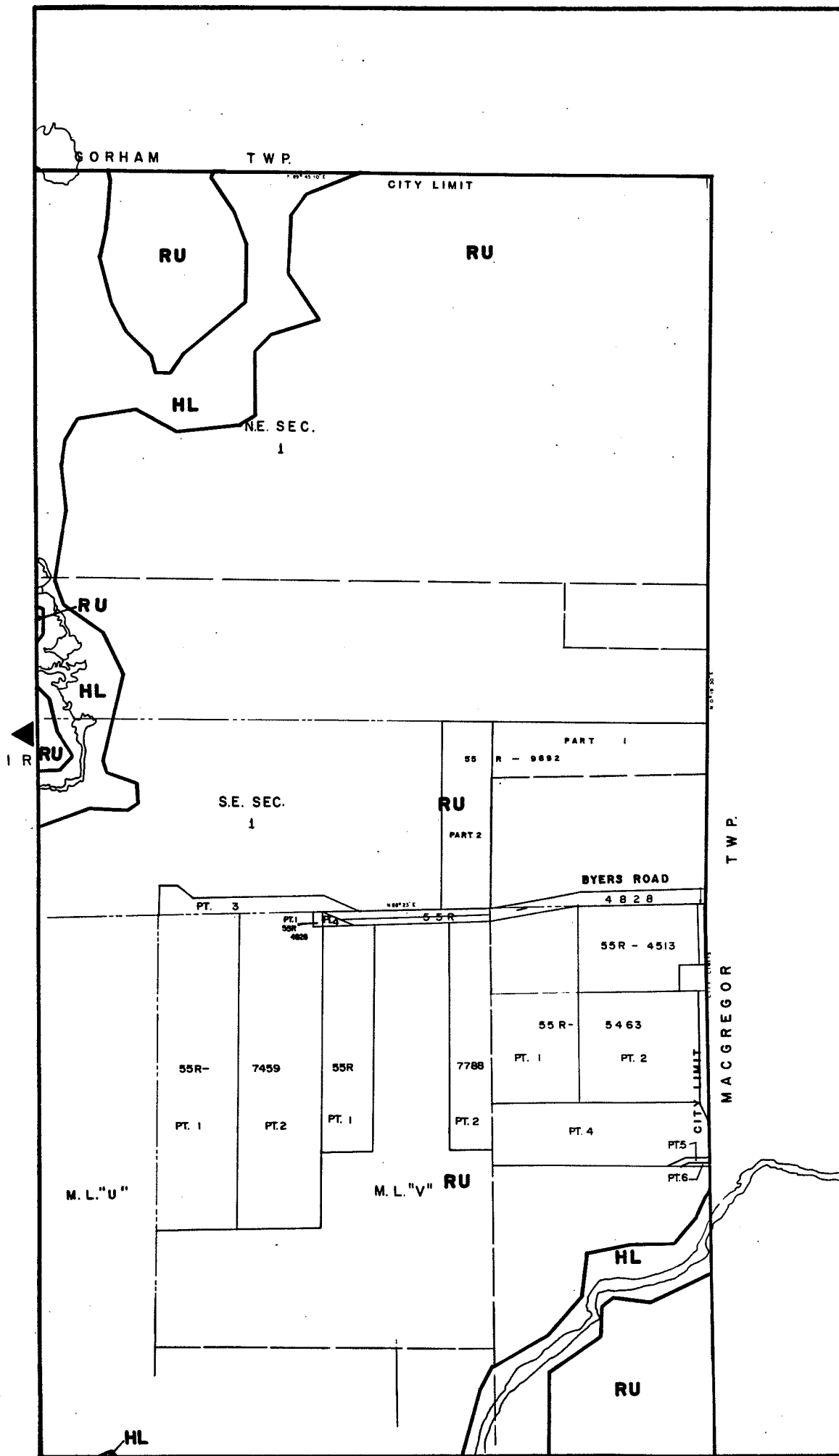
0 m. 100 m. 200 m.

# MAP 1 S

## LEGEND

THE FOLLOWING IS FOR INFORMATION ONLY AND DOES NOT FORM PART OF THE BY-LAW.

ORIGINALLY ENACTED  
 BY BY-LAW 177-1983  
 PASSED JULY 26, 1983  
 EFFECTIVE DATE MARCH 16, 1987  
 REVISION DATES:  
 APRIL 1992



BY-LAW 177-1983  
 PASSED THIS 26<sup>th</sup> DAY OF  
JULY, 1983

— map boundary



0 m. 100 m. 200 m.