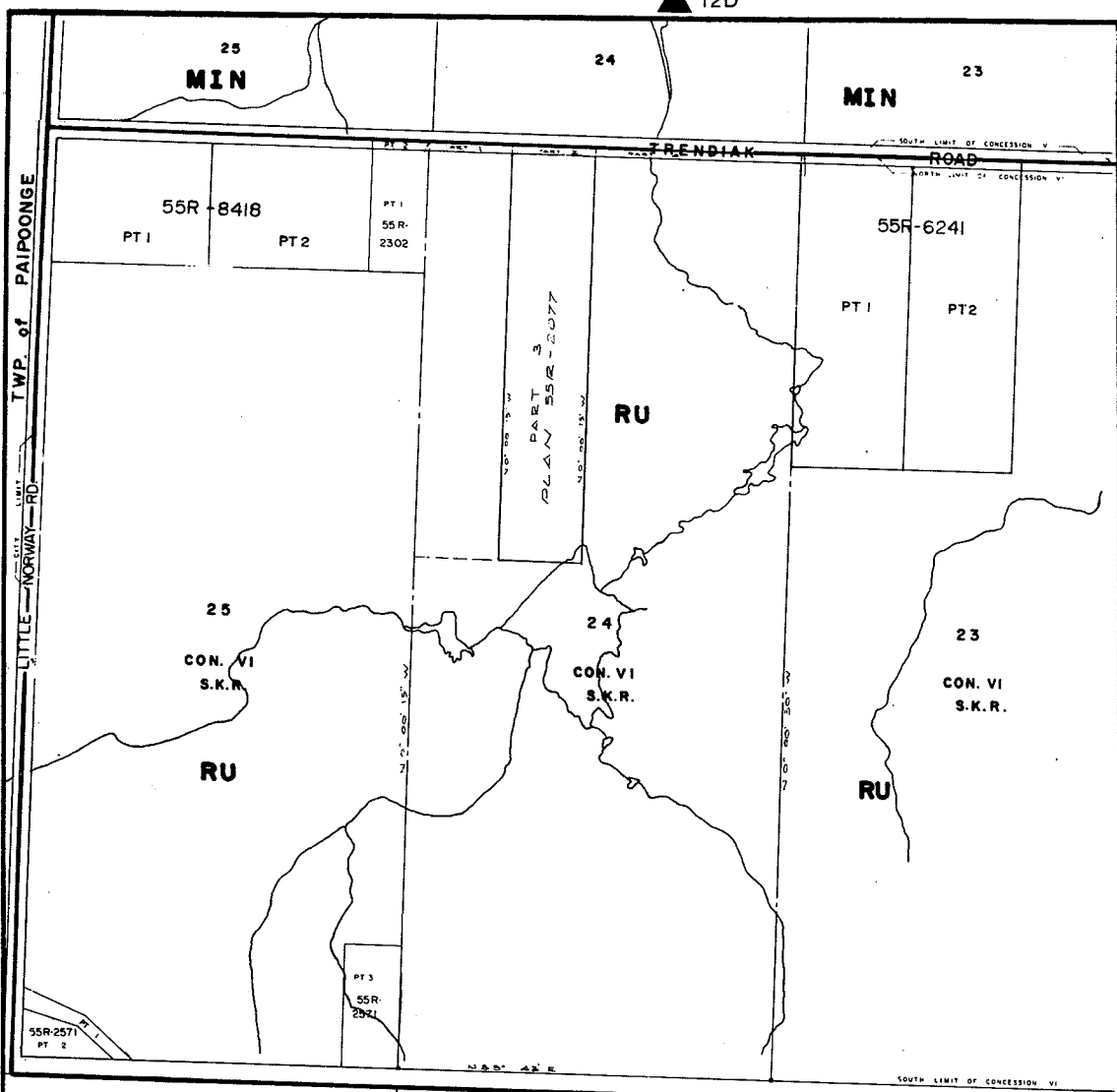


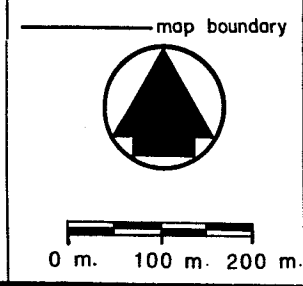
MAP 13D

LEGEND

THE FOLLOWING IS FOR INFORMATION ONLY AND DOES NOT FORM PART OF THE BY-LAW. ORIGINALLY ENACTED BY BY-LAW 177-1983 PASSED JULY 26, 1983 EFFECTIVE DATE MARCH 16, 1987 REVISION DATES: AUGUST 1991



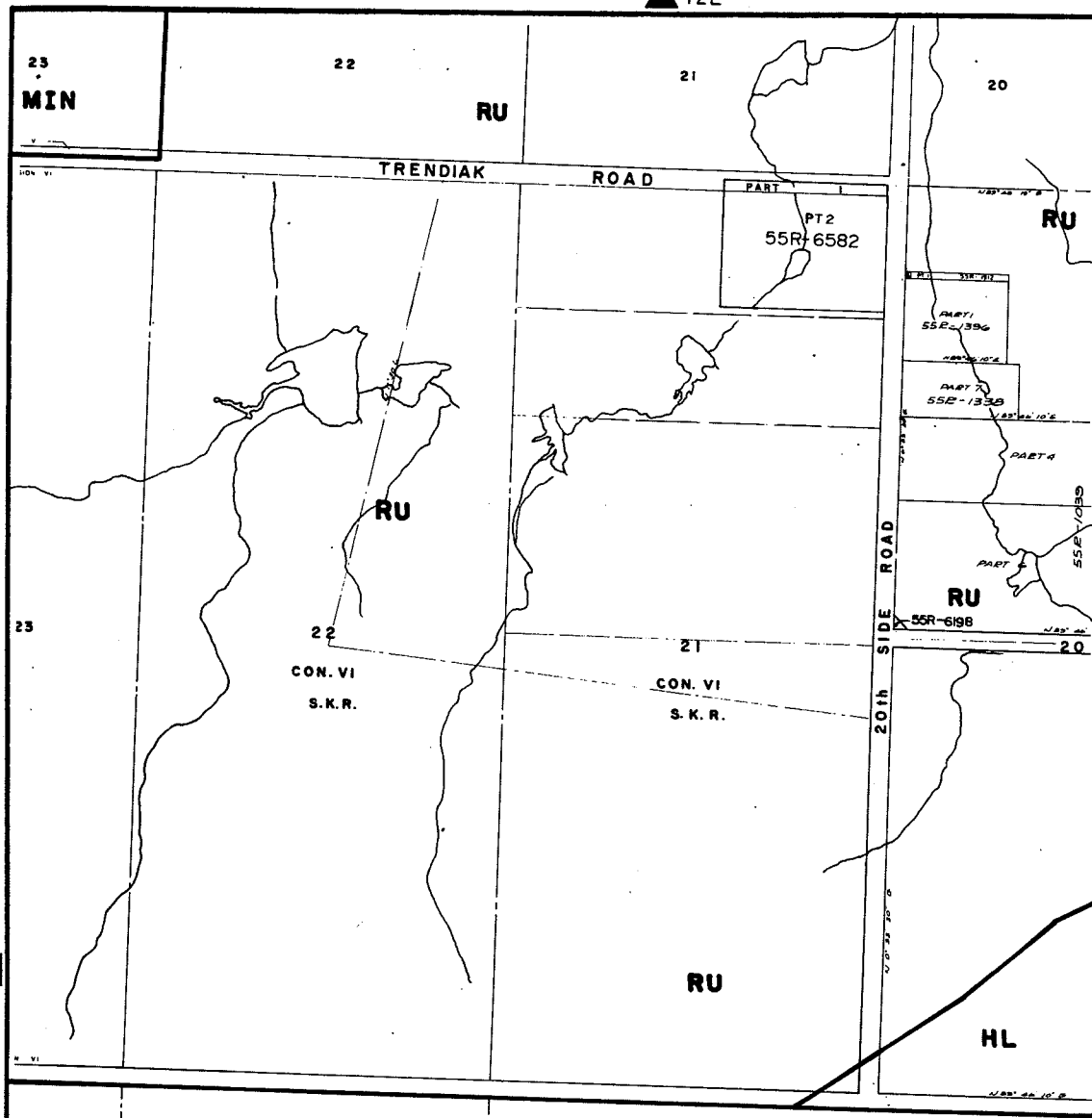
BY-LAW 177-1983
 PASSED THIS 26th DAY OF
JULY 1983



MAP 13E

LEGEND

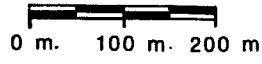
THE FOLLOWING IS FOR INFORMATION ONLY AND DOES NOT FORM PART OF THE BY-LAW. ORIGINALLY ENACTED BY BY-LAW 177-1983 PASSED JULY 26, 1983 EFFECTIVE DATE MARCH 16, 1987 REVISION DATES: AUGUST 1991 DECEMBER 1991



TOWNSHIP OF BLAKE

BY-LAW 177 - 1983
 PASSED THIS 26th DAY OF
JULY 1983

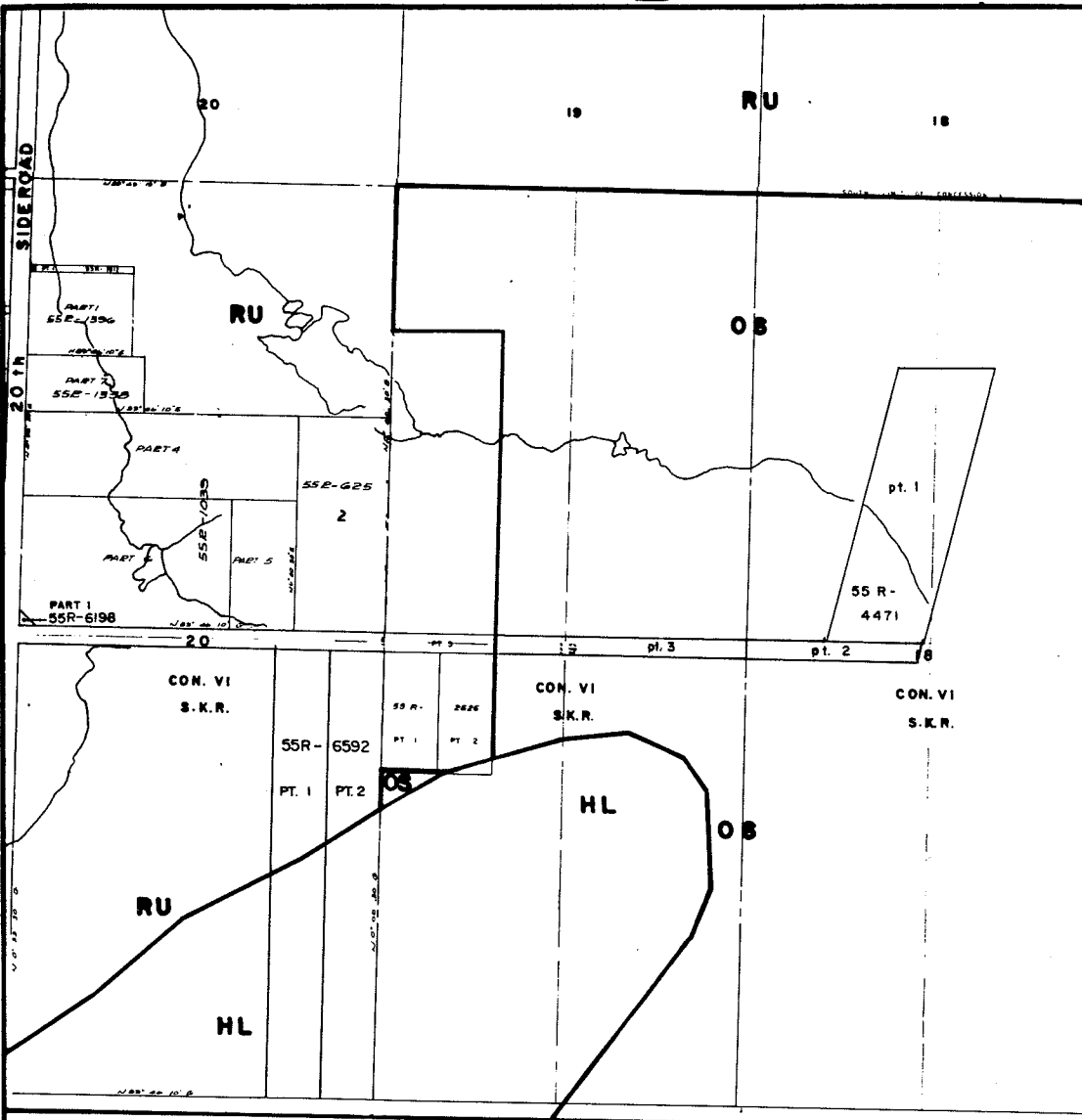
map boundary



MAP 13F

LEGEND

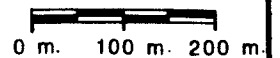
THE FOLLOWING IS FOR INFORMATION ONLY AND DOES NOT FORM PART OF THE BY-LAW. ORIGINALLY ENACTED BY BY-LAW 177-1983 PASSED JULY 26, 1983 EFFECTIVE DATE MARCH 16, 1987 REVISION DATES:
 AUGUST 1991
 DECEMBER 1991
 AUGUST 2003



TOWNSHIP OF BLAKE

BY-LAW 177-1983
 PASSED THIS 26th DAY OF
 JULY 19 83

map boundary

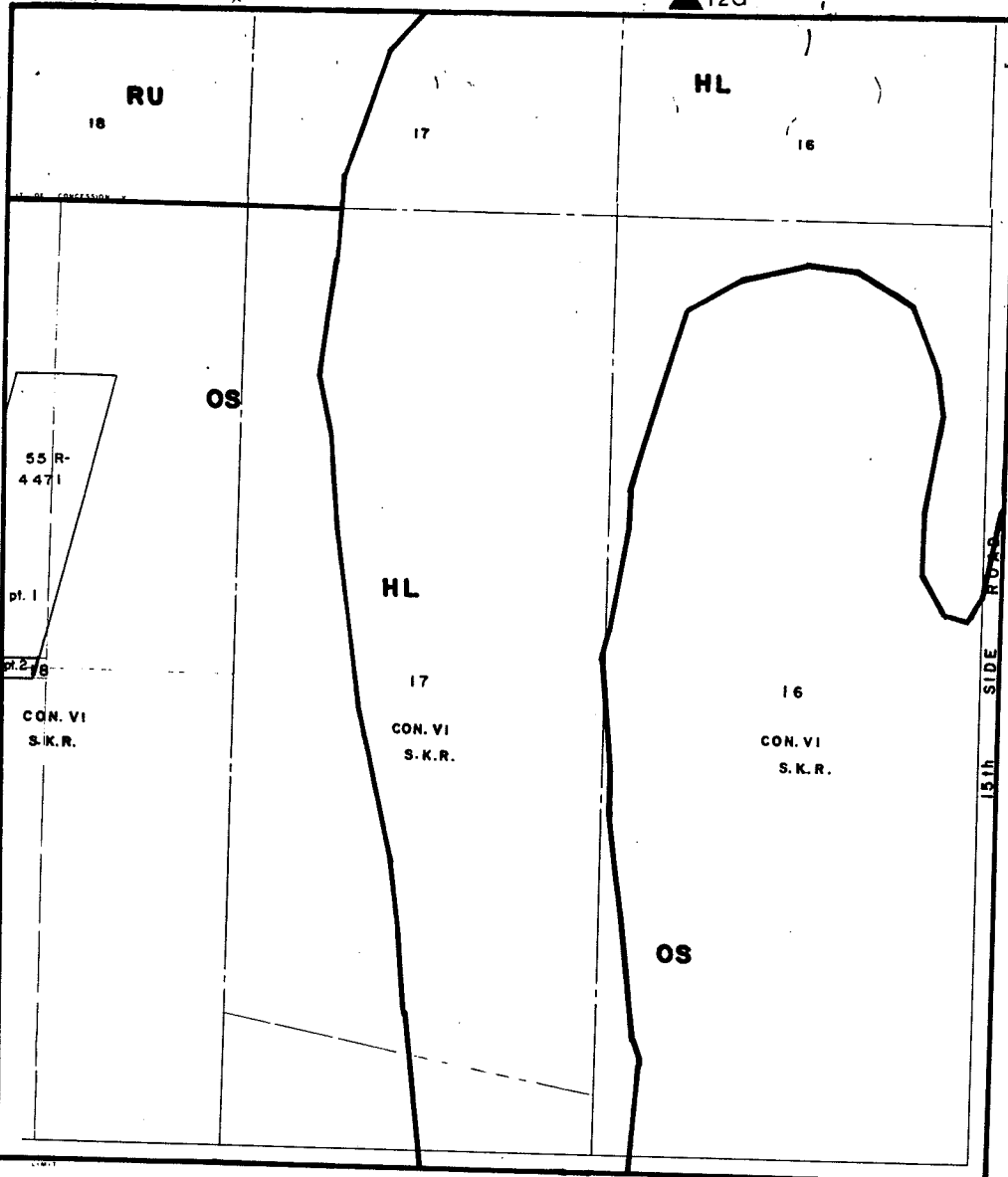


▲ 12G

MAP 13G

LEGEND

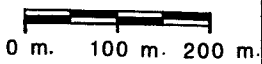
THE FOLLOWING IS FOR INFORMATION ONLY AND DOES NOT FORM PART OF THE BY-LAW. ORIGINALLY ENACTED BY BY-LAW 177-1983 PASSED JULY 26, 1983 EFFECTIVE DATE MARCH 16, 1987 REVISION DATES: AUGUST 1991



TOWNSHIP OF BLAKE

BY-LAW 177-1983
 PASSED THIS 26th DAY OF
JULY 1983

map boundary



MAP WELCOME ISLANDS-1

LEGEND

THE FOLLOWING IS FOR INFORMATION ONLY AND DOES NOT FORM PART OF THE BY-LAW.

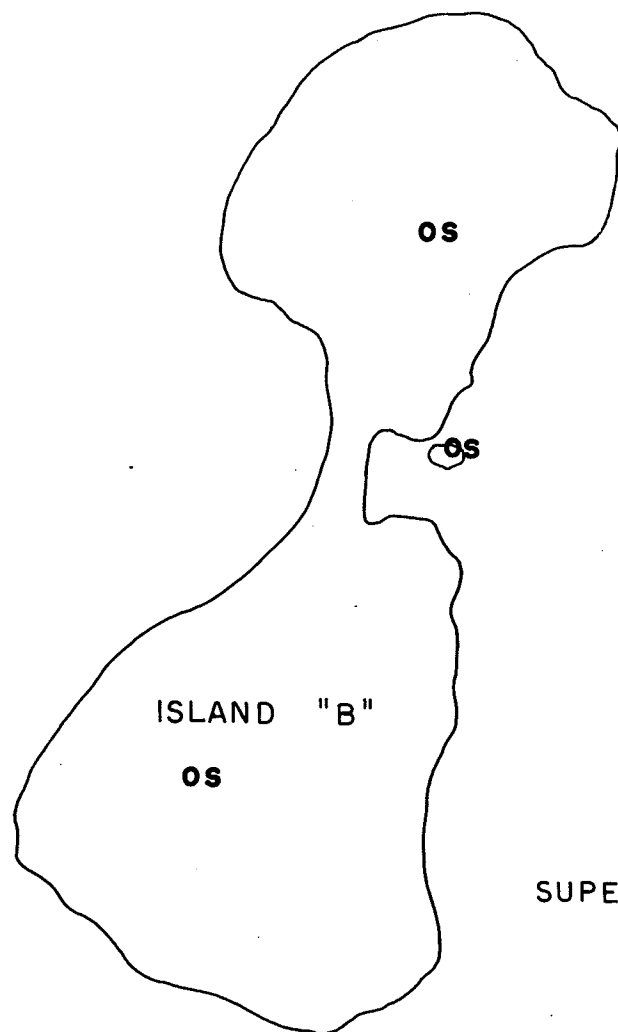
ORIGINALLY ENACTED

BY BY-LAW 177-1983

PASSED JULY 26, 1983

EFFECTIVE DATE MARCH 16, 1987

REVISION DATES:



LAKE

SUPERIOR

BY-LAW 177 - 1983
PASSED THIS 26th DAY OF
JULY 19 83

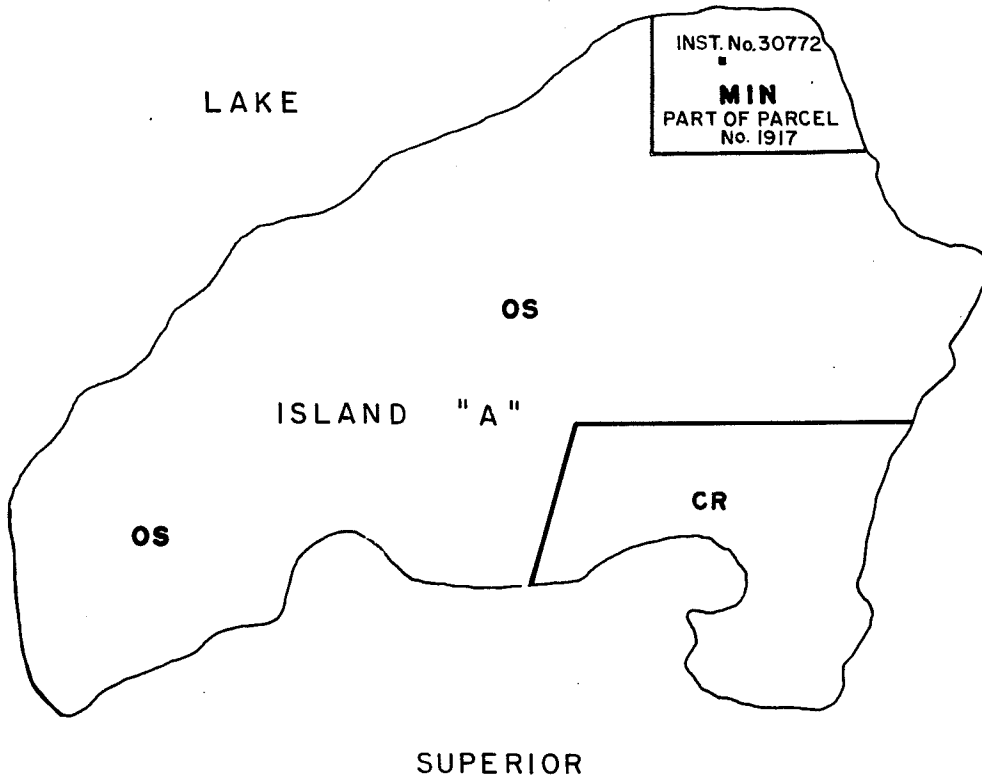
map boundary



0 m. 100 m. 200 m.

LEGEND

THE FOLLOWING IS FOR INFORMATION ONLY AND DOES NOT FORM PART OF THE BY-LAW.
ORIGINALLY ENACTED BY BY-LAW 177-1983
PASSED JULY 26, 1983
EFFECTIVE DATE MARCH 16, 1987
REVISION DATES:



BY-LAW 177-1983
PASSED THIS 26th DAY OF
JULY 1983

— map boundary

