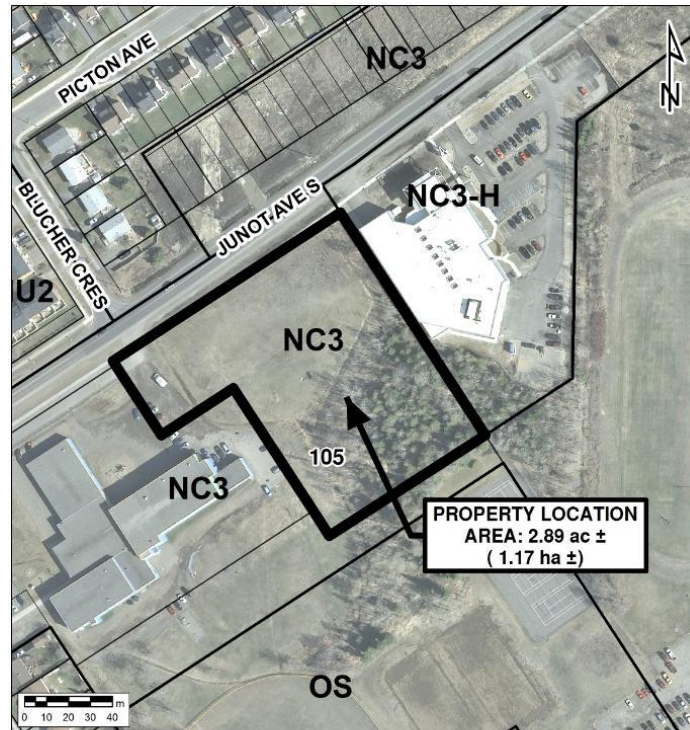


Junot Avenue South



THIS MAP IS FOR GENERAL ILLUSTRATIVE PURPOSES ONLY. DIMENSIONS AND/OR AREAS ARE APPROXIMATE.
 MU2 - Mixed Use Zone 2 NC3 - Neighbourhood Centre Three Zone
 OS - Open Space Zone NC3-H - Neighbourhood Centre Three Zone - Holding

*Note ** All dimensions are approximate*

Site Details

- Legal Description:** *The lands have not yet been surveyed and legally defined. It is described as Part of Lot 4, Concession A, Township of McIntyre. It will be composed of Parts of PIN 62173-0069 & 62173-0096*
- Area:** *11,695 square metres (2.89 acres)*
- Frontage:** *123.2 metres (404 feet)*
- Current Zoning** *“NC3” – Neighbourhood Centre Three*
- Asking Price:** *\$389,000*
- Note:** *Development must provide public non-motorized trail access from Junot Avenue to the Open Space/Park located to the South/East of the lands.*
- Site Characteristics:** *The property is located between the Superior North EMS Headquarters and the Boys and Girls Clubs*
- Contact:** *Ralph St. Jarre, Realtor, Remax 626-3049*