

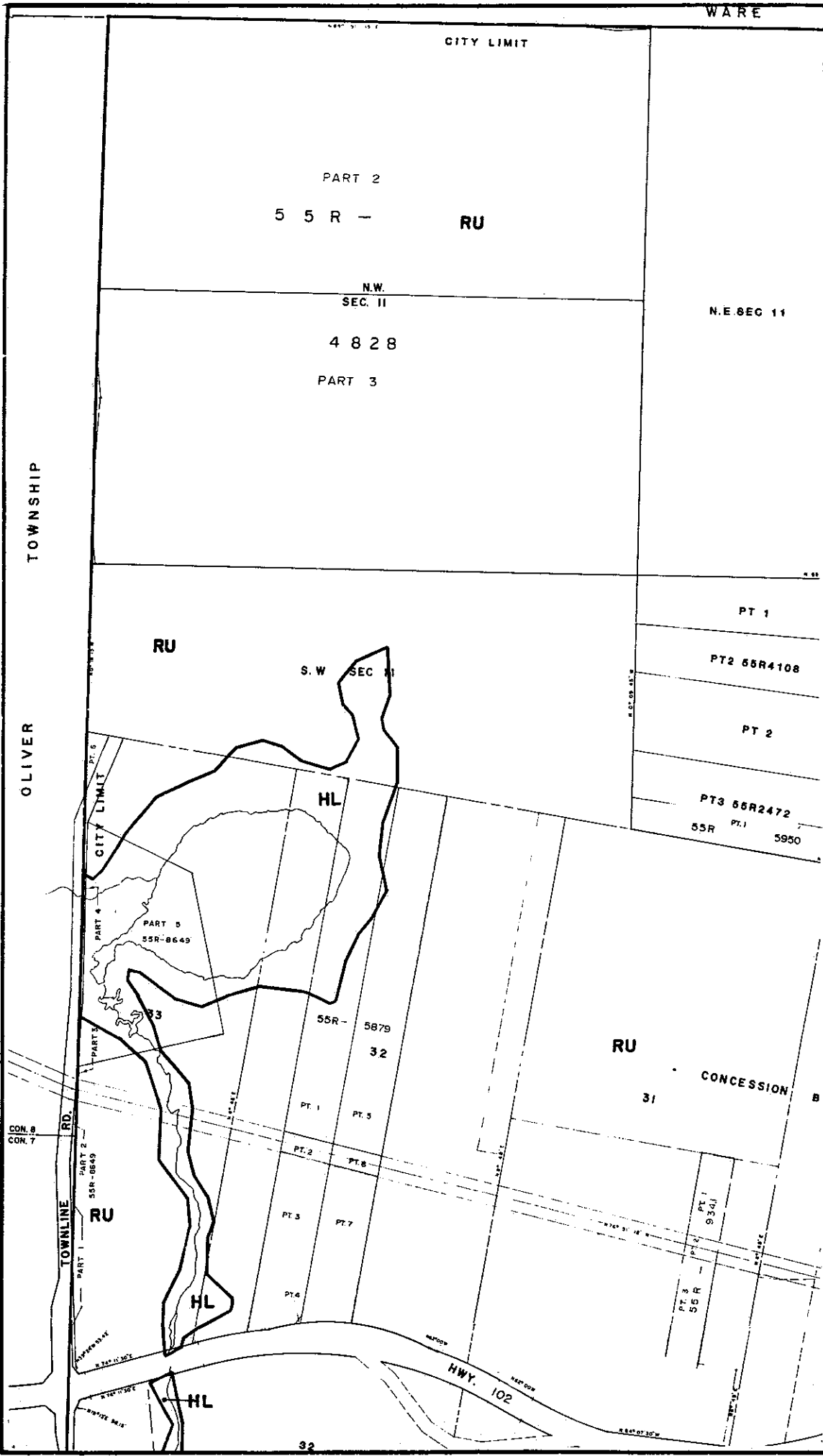
MAP 1 A

LEGEND

THE FOLLOWING IS FOR INFORMATION ONLY AND DOES NOT FORM PART OF THE BY-LAW

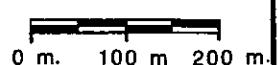
ORIGINALLY FRACATED BY BY-LAW 177-1983 PASSED JULY 26, 1983 AMENDED BY BY-LAW 50-1986 PASSED MARCH 11, 1986 EFFECTIVE DATE MARCH 16 1987 REVISION DATES:

APRIL 1992



18

map boundary



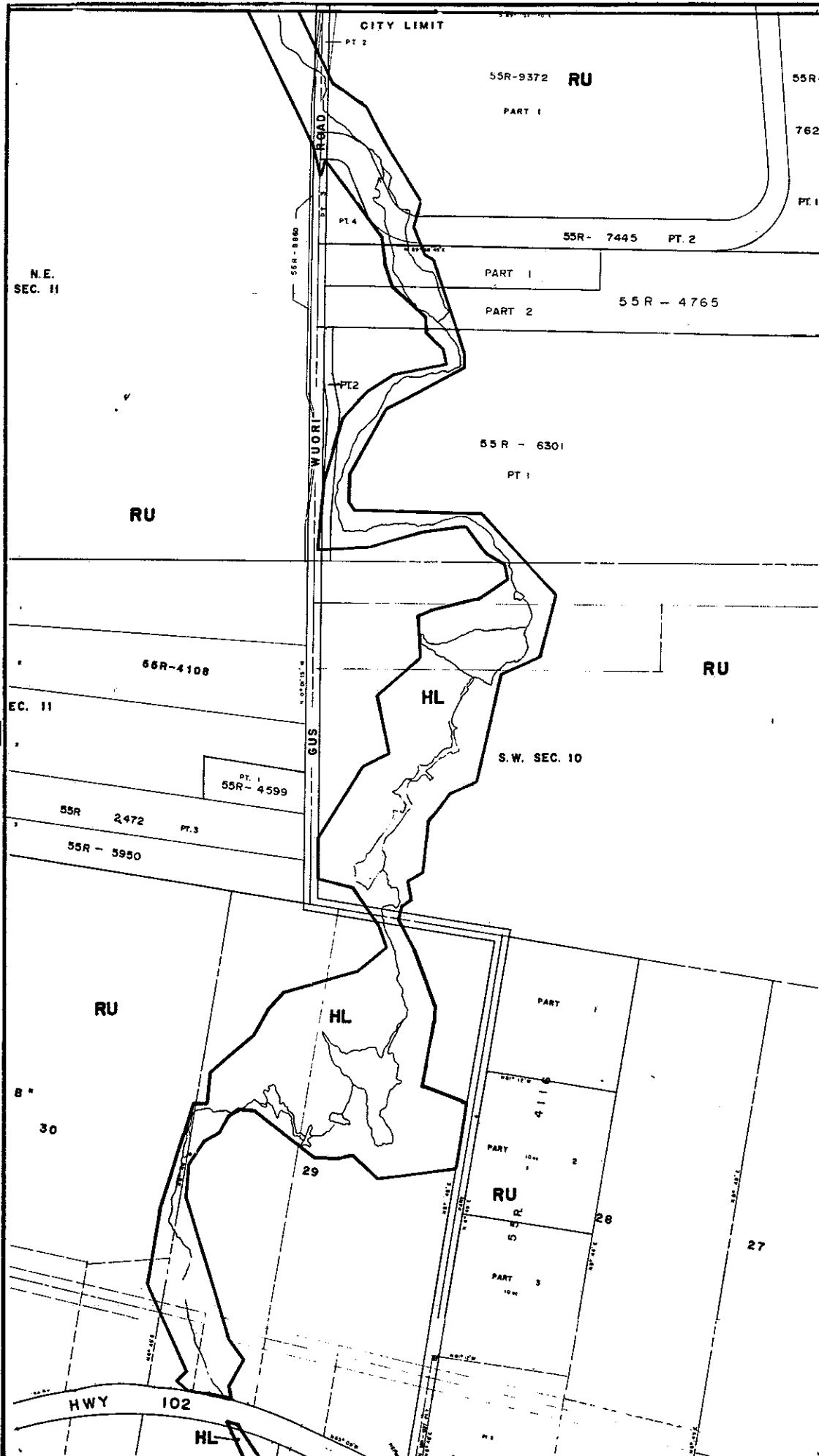
MAP 1 C

LEGEND

THE FOLLOWING IS FOR INFORMATION ONLY AND DOES NOT FORM PART OF THE BY-LAW.

ORIGINALLY ENACTED BY BY-LAW 177-1983
PASSED JULY 26, 1983
AMENDED BY BY-LAW 50-1986
PASSED MARCH 11, 1986
EFFECTIVE DATE MARCH 16 1987
REVISION DATES:

APRIL 1992



map boundary



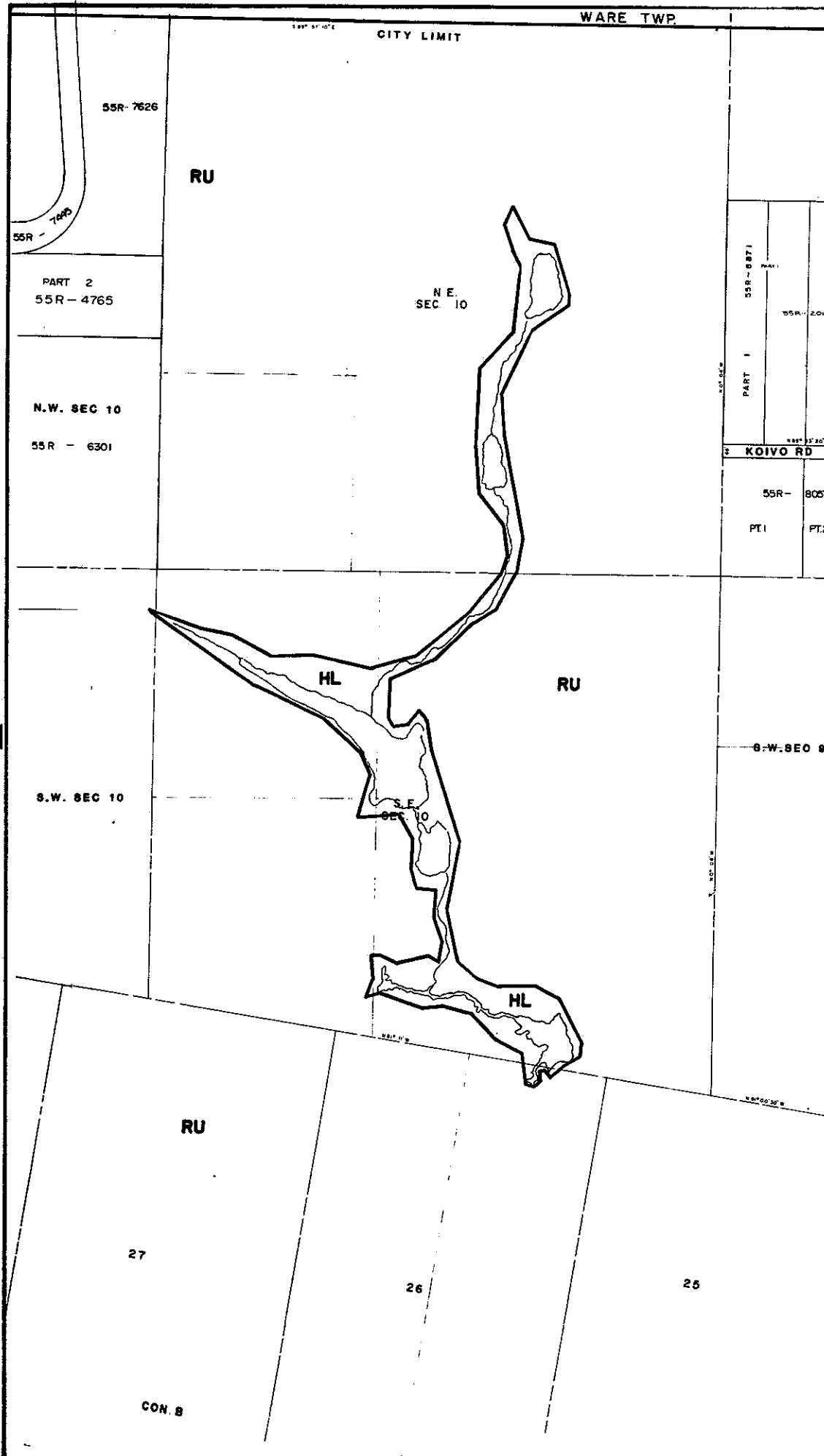
0 m. 100 m. 200 m.

MAP 1 D

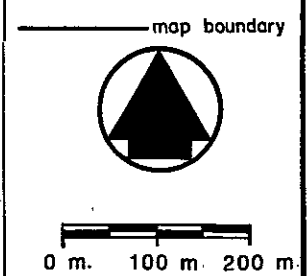
LEGEND

THE FOLLOWING IS FOR INFORMATION ONLY AND DOES NOT FORM PART OF THE BY-LAW.

ORIGINALLY ENACTED
BY BY-LAW 177-1983
PASSED JULY 26, 1983
EFFECTIVE DATE MARCH 16, 1987
REVISION DATES:
APRIL 1992



BY-LAW 177-1983
PASSED THIS 26th DAY OF
JULY 1983



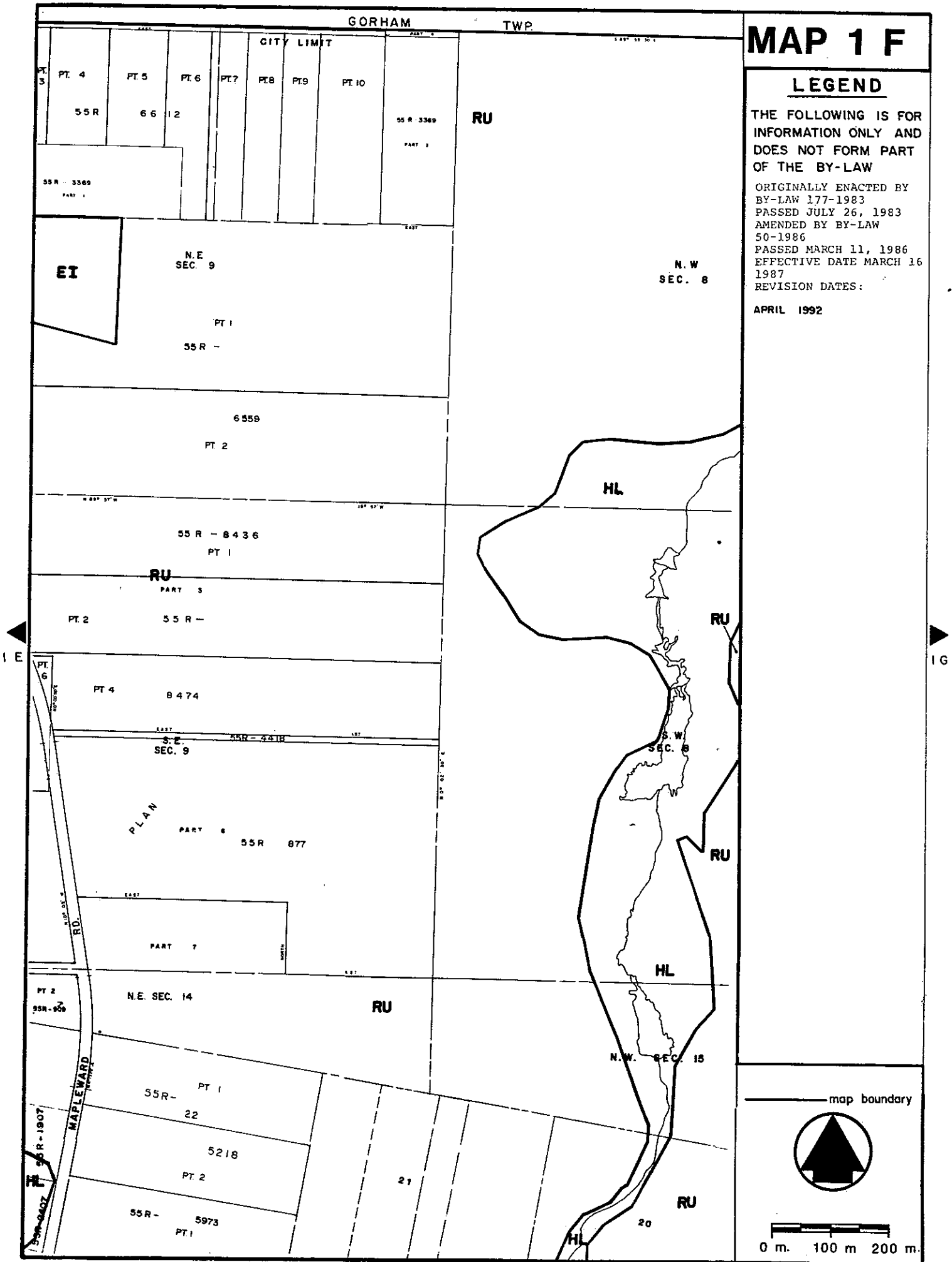
MAP 1 F

LEGEND

THE FOLLOWING IS FOR INFORMATION ONLY AND DOES NOT FORM PART OF THE BY-LAW

ORIGINALLY ENACTED BY BY-LAW 177-1983
PASSED JULY 26, 1983
AMENDED BY BY-LAW 50-1986
PASSED MARCH 11, 1986
EFFECTIVE DATE MARCH 16 1987

REVISION DATES:
APRIL 1992



GORHAM

T W P.

MAP 1 G

LEGEND

THE FOLLOWING IS FOR INFORMATION ONLY AND DOES NOT FORM PART OF THE BY-LAW.

ORIGINALLY ENACTED BY BY-LAW 177-1983
PASSED JULY 26, 1983
AMENDED BY BY-LAW 50-1986
PASSED MARCH 11, 1986
EFFECTIVE DATE MARCH 16 1987
REVISION DATES:

CITY LIMIT

83 R - 4024
PART 1

RU

N.W. SEC 8

N.E.
SEC 8

PART 1
55 R -
2528

N.W. SEC. 7

HL

HL

S.W. SEC 8

S.E.
SEC. 8

S.W. SEC 7

HL

ET

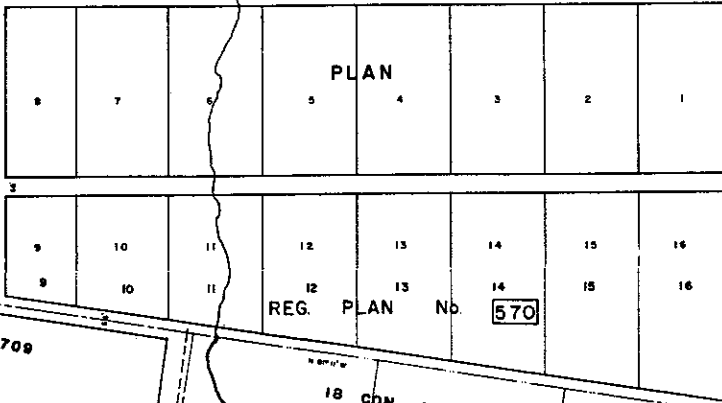
RU

HL

N.W. SEC 15

PLAN

N.W. SEC 16



20 CON B.

PLAN 709

18 CON B

map boundary



0 m. 100 m. 200 m.

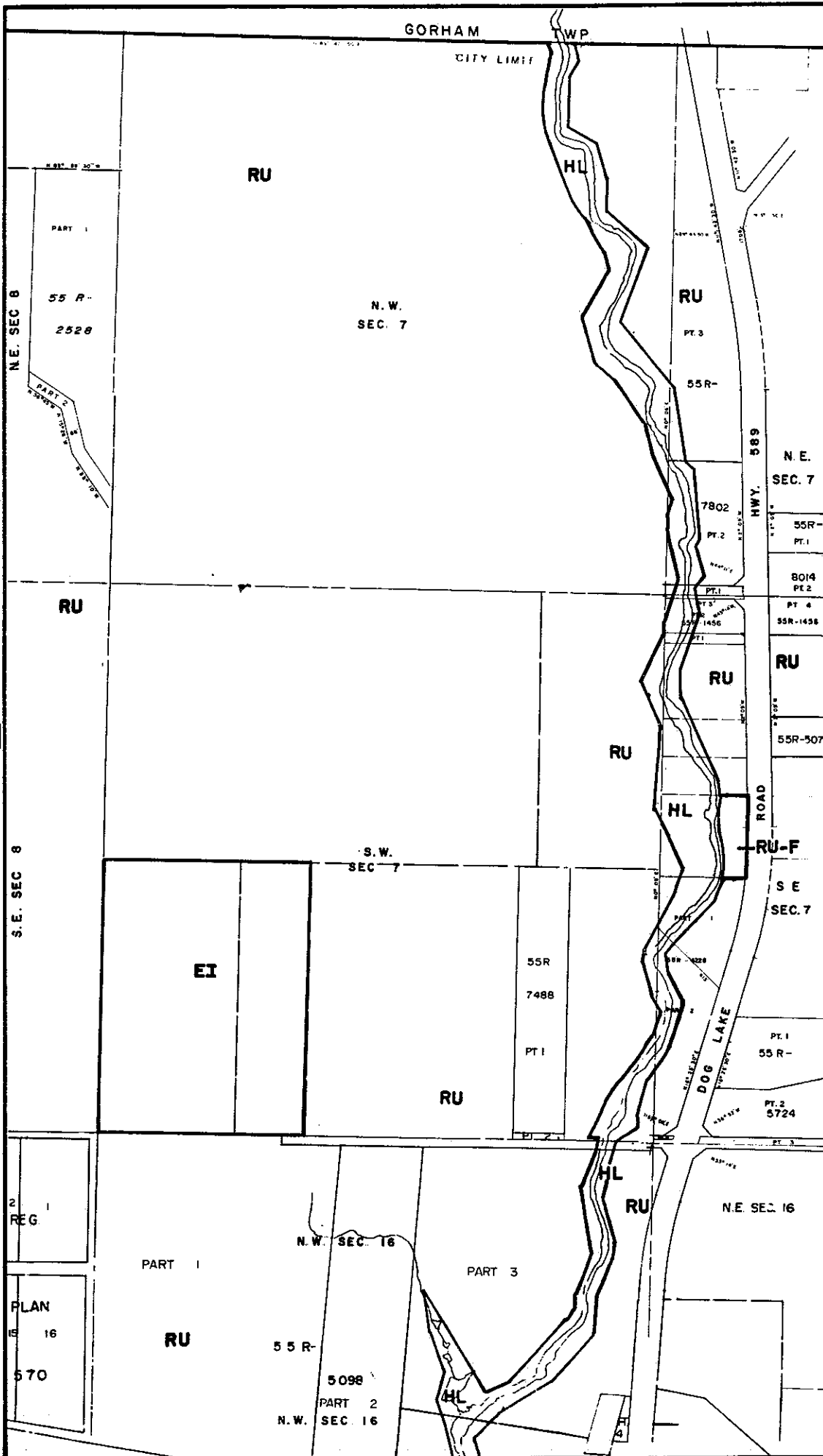
MAP 1 H

LEGEND

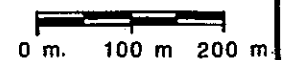
THE FOLLOWING IS FOR INFORMATION ONLY AND DOES NOT FORM PART OF THE BY-LAW

ORIGINALLY ENACTED BY
 BY-LAW 177-1983
 PASSED JULY 26, 1983
 AMENDED BY BY-LAW
 50-1986
 PASSED MARCH 11, 1986
 EFFECTIVE DATE MARCH 16
 1987
 REVISION DATES:

APRIL 1992



map boundary



LEGEND

THE FOLLOWING IS FOR INFORMATION ONLY AND DOES NOT FORM PART OF THE BY-LAW. ORIGINALLY ENACTED BY BY-LAW 177-1983 PASSED JULY 26, 1983 AMENDED BY BY-LAW 50-1986 PASSED MARCH 11, 1986 EFFECTIVE DATE MARCH 16 1987 REVISION DATES: APRIL 1992

CITY LIMIT

RU

N.E. SEC 7

N.W. SEC 6

RU

PT. 3

55 R

7802

PT. 2

55R - PT. 1

PT. 2

8014

PART 4

55 R 1456

RU

55R - 5077

PT. 1

RU

HL

RU-F

S.E. SEC 7

S.W. SEC 6

S.W. SEC 7

DOG LAKE

55R -

5724

PART 1

PT. 6

PAR. - 51

PT. 7

55 R 2610

PT. 5

PAR. - 34

PART 8

55R - 4318

PART 1

PART 2

PT. 1

PT. 2

55R - 6915

PT. 1

55R - 5090

MELBOURNE

55R - 4573

PART 2

N.E. SEC. 16

RU

HL

N.W. SEC 17

SR-5098



0 m. 100 m 200 m

map boundary

MAP 1 J

GORHAM TWP.

CITY LIMIT

LEGEND

THE FOLLOWING IS FOR INFORMATION ONLY AND DOES NOT FORM PART OF THE BY-LAW.

ORIGINALLY ENACTED
BY BY-LAW 177-1983
PASSED JULY 26, 1983
EFFECTIVE DATE MARCH 16, 1987
REVISION DATES:
APRIL 1992

RU

N.W.
SEC. 6

RU

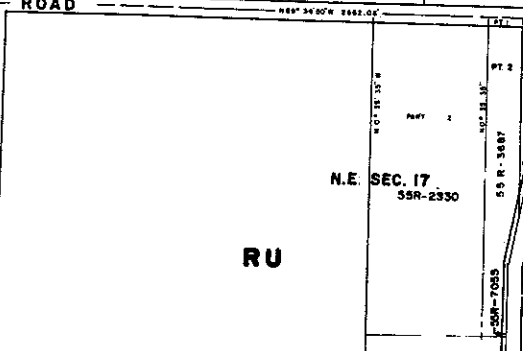
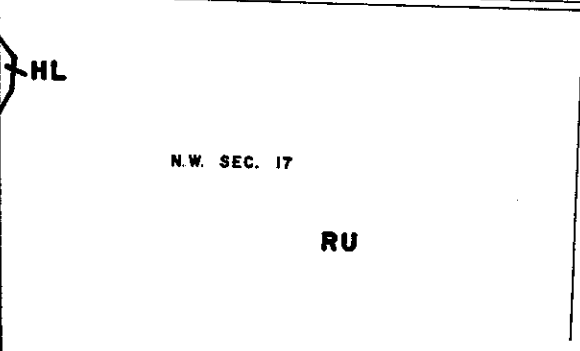
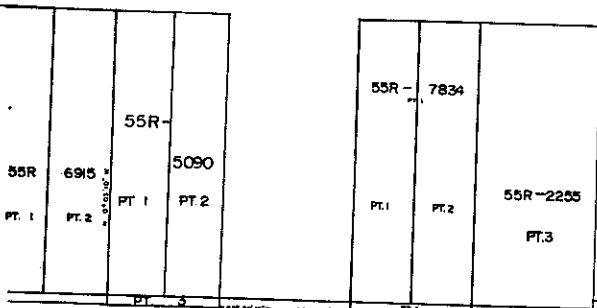
N.E.
SEC. 6

RU

S.W.
SEC. 6

RU

S.E.
SEC. 6



BY-LAW 177-1983
PASSED THIS 26th DAY OF
JULY 1983

map boundary



0 m. 100 m 200 m.

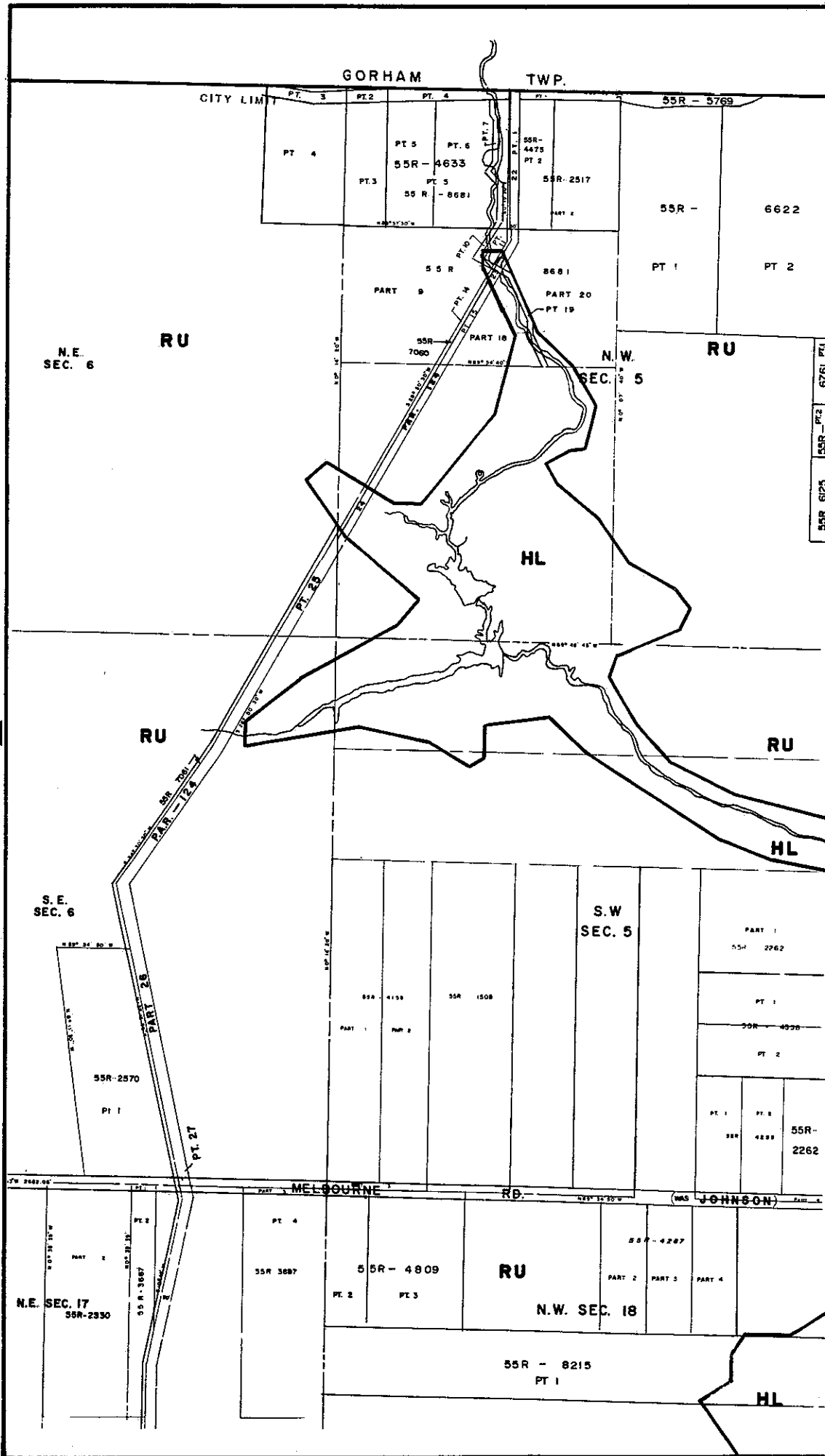
MAP 1 K

LEGEND

THE FOLLOWING IS FOR INFORMATION ONLY AND DOES NOT FORM PART OF THE BY-LAW.

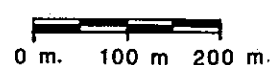
ORIGINALLY ENACTED BY BY-LAW 177-1983
 PASSED JULY 26, 1983
 AMENDED BY BY-LAW 50-1986
 PASSED MARCH 11, 1986
 EFFECTIVE DATE MARCH 16 1987
 REVISION DATES:

APRIL 1992



55R 623 55R 612 55R 6761 PT 1

map boundary

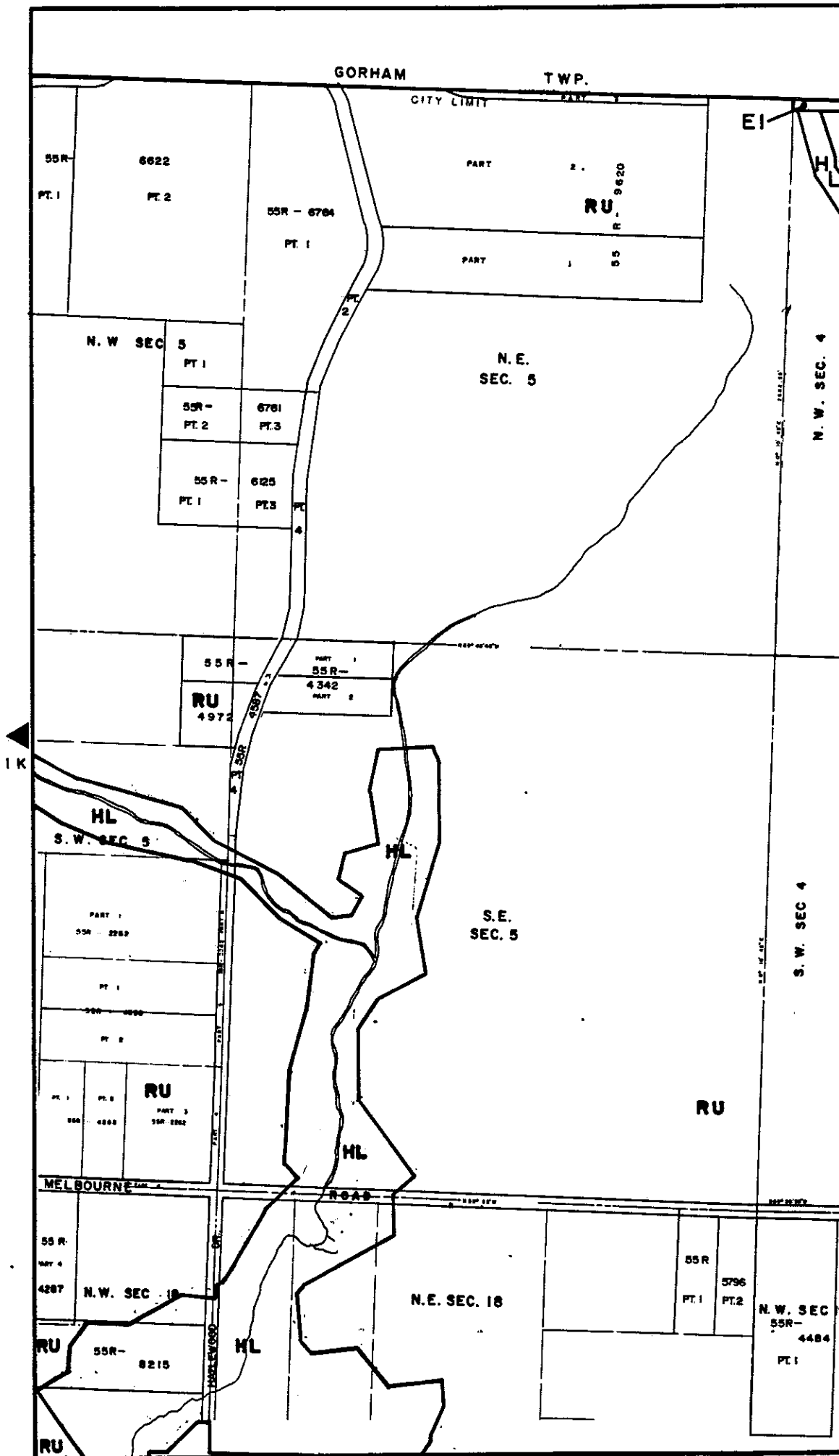


MAP 1 L

LEGEND

THE FOLLOWING IS FOR INFORMATION ONLY AND DOES NOT FORM PART OF THE BY-LAW. ORIGINALLY ENACTED BY BY-LAW 177-1983 PASSED JULY 26, 1983 AMENDED BY BY-LAW 50-1986 PASSED MARCH 11, 1986 EFFECTIVE DATE MARCH 16 1987 REVISION DATES:

APRIL 1992
AUGUST 2001



map boundary



0 m. 100 m. 200 m.

MAP 1 N

LEGEND

THE FOLLOWING IS FOR INFORMATION ONLY AND DOES NOT FORM PART OF THE BY-LAW

ORIGINALLY ENACTED BY BY-LAW 177-1983 PASSED JULY 26, 1983 EFFECTIVE DATE MARCH 16, 1987

REVISION DATES:
AUGUST 1987
APRIL 1992
AUGUST 2000

G O R H A M T W P

CITY LIMIT

PART 3

PART 1

PART 2

55 R

9710

55R

8235

RU

RU

NE SEC 4

NW SEC 3

EI

HL

HL
S.W. SEC 3

SE SEC 4

RU

55R - 7635

55R 3PU7

RU

MELBOURNE (WAS JOHNSON) ROAD

RU 55 R - 4903

55R - 7635

PT 1

PT 2

PT 3

PART 1

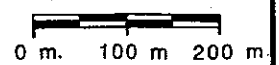
PART 2

NE SEC 19

N.W. SEC. 20

BY-LAW . 177 - 1983
PASSED THIS 26th DAY OF
JULY 19 83

map boundary



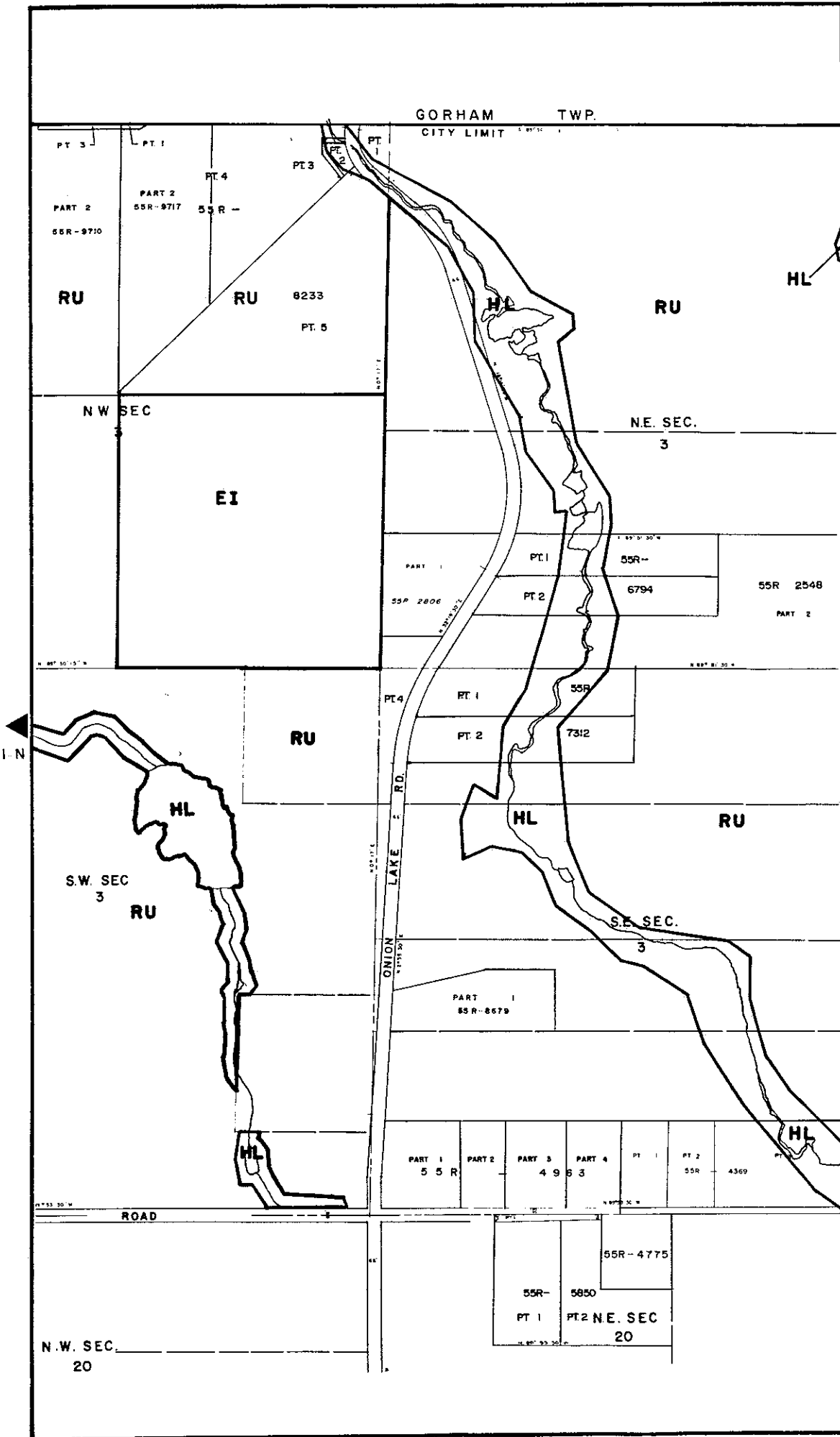
MAP 10

LEGEND

THE FOLLOWING IS FOR INFORMATION ONLY AND DOES NOT FORM PART OF THE BY-LAW

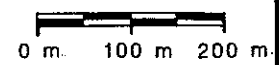
ORIGINALLY ENACTED
 BY BY-LAW 177-1983
 PASSED JULY 26, 1983
 EFFECTIVE DATE MARCH 16, 1987
 REVISION DATES:
 AUGUST 1987
 APRIL 1992
 AUGUST 2000

HL



BY-LAW 177-1983
 PASSED THIS 26th DAY OF
 JULY 1983

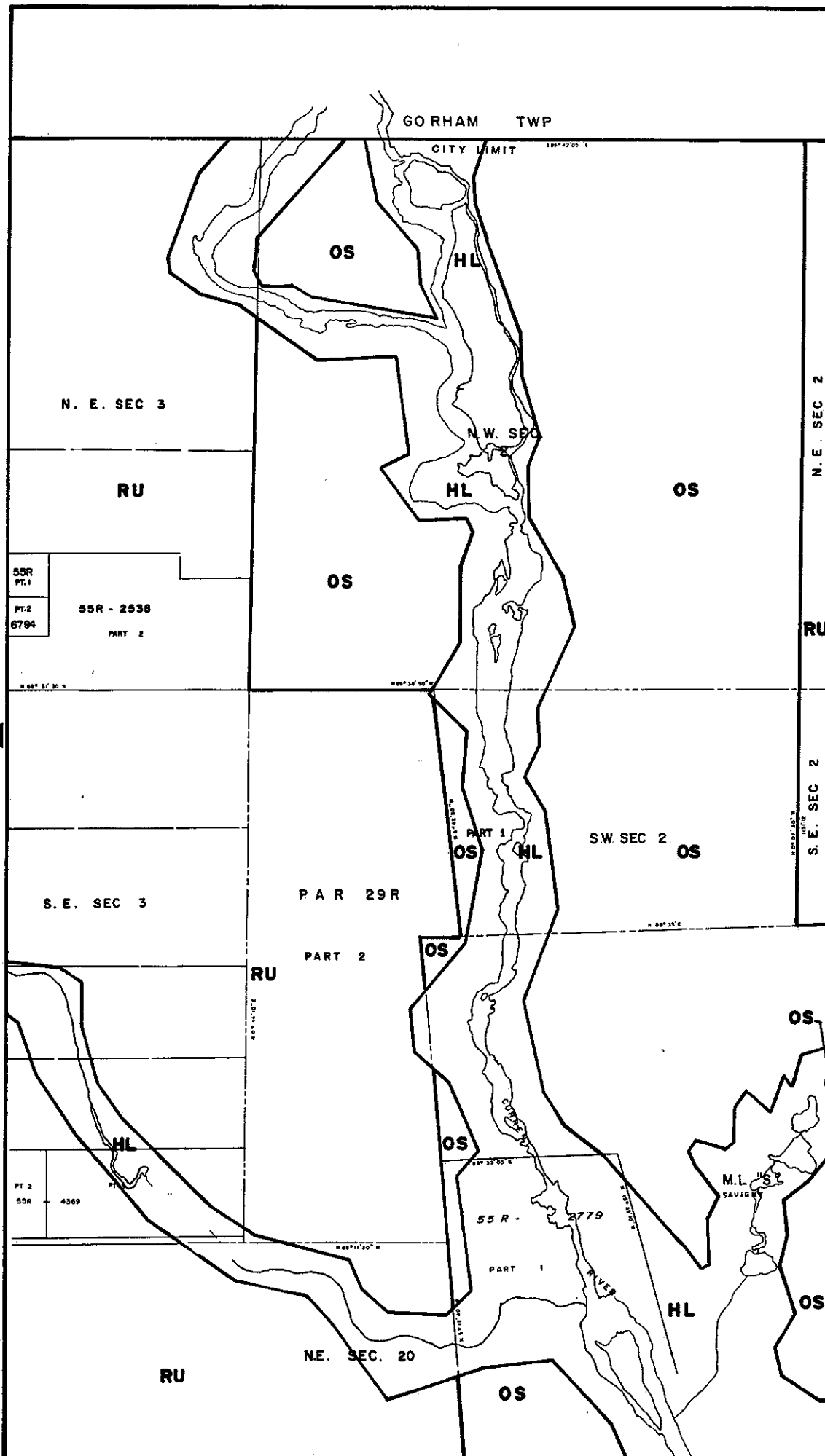
map boundary



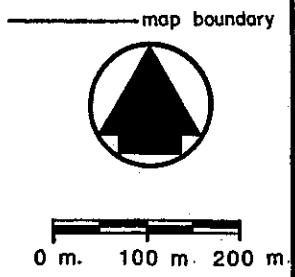
MAP 1 P

LEGEND

THE FOLLOWING IS FOR INFORMATION ONLY AND DOES NOT FORM PART OF THE BY-LAW ORIGINALLY ENACTED BY BY-LAW 177-1983 PASSED JULY 26, 1983 EFFECTIVE DATE MARCH 16, 1987 REVISION DATES: APRIL 1992



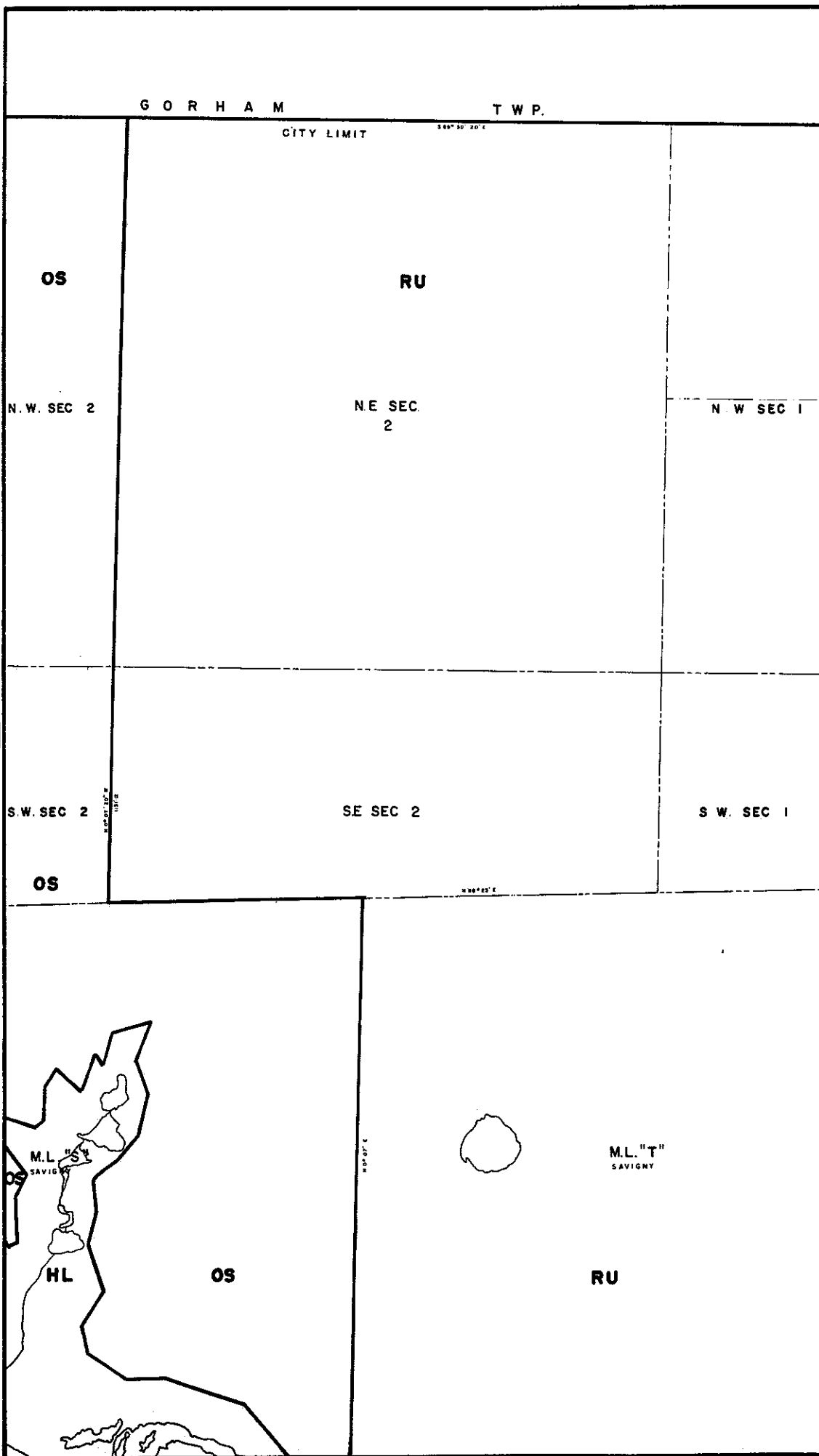
BY-LAW 177-1983
PASSED THIS 26th DAY OF
JULY 1983



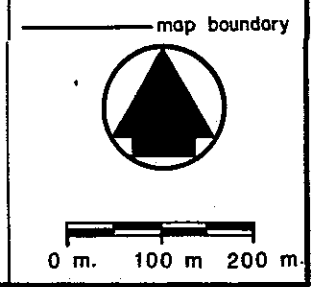
MAP 1 Q

LEGEND

THE FOLLOWING IS FOR INFORMATION ONLY AND DOES NOT FORM PART OF THE BY-LAW.
ORIGINALLY ENACTED BY BY-LAW 177-1983
PASSED JULY 26, 1983
EFFECTIVE DATE MARCH 16, 1987
REVISION DATES:



BY-LAW 177-1983
PASSED THIS 26th DAY OF
JULY 1983

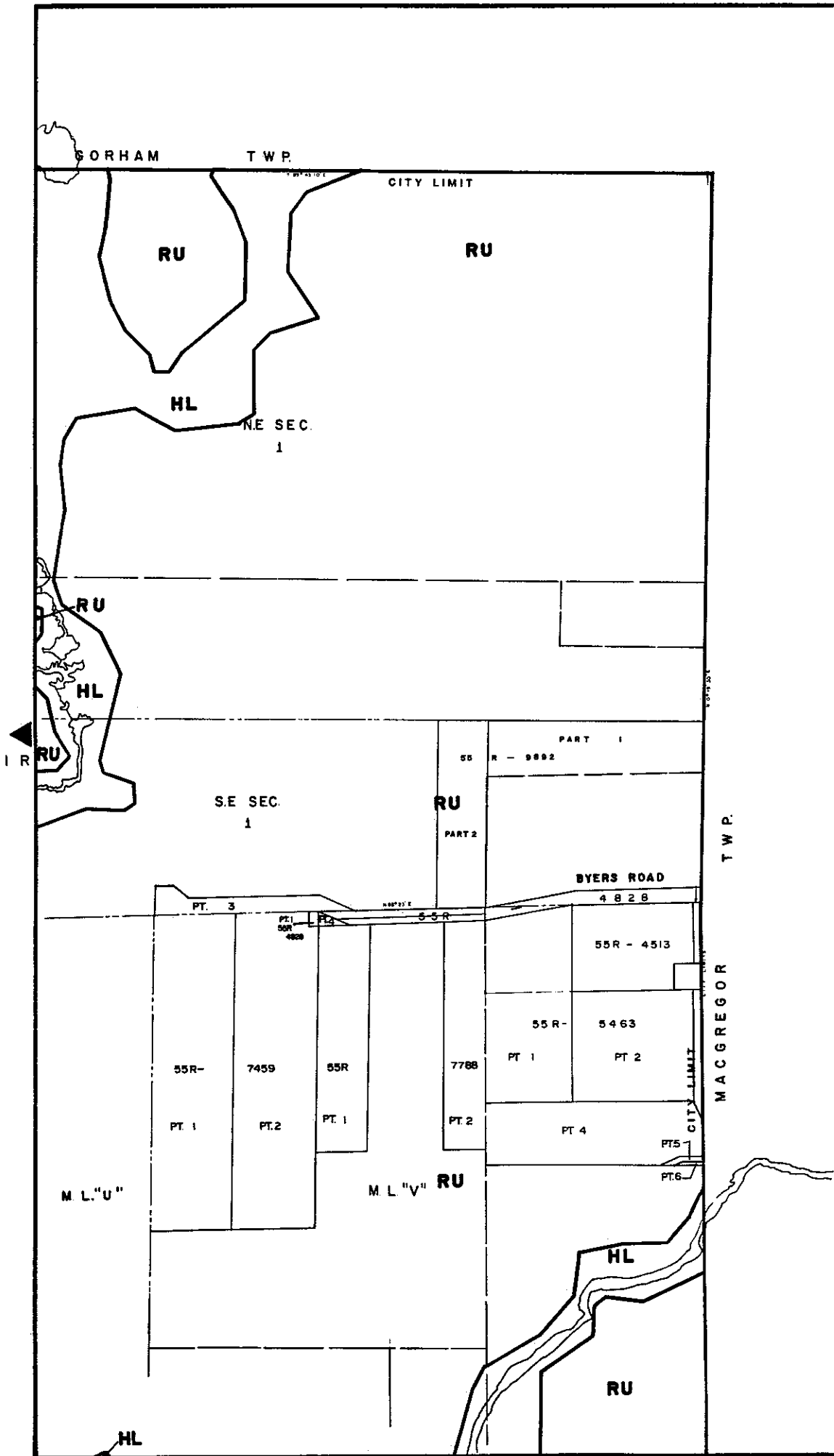


MAP 1 S

LEGEND

THE FOLLOWING IS FOR INFORMATION ONLY AND DOES NOT FORM PART OF THE BY-LAW.

ORIGINALLY ENACTED
 BY BY-LAW 177-1983
 PASSED JULY 26, 1983
 EFFECTIVE DATE MARCH 16, 1987
 REVISION DATES:
 APRIL 1992



BY-LAW 177-1983
 PASSED THIS 26th DAY OF
JULY, 1983

