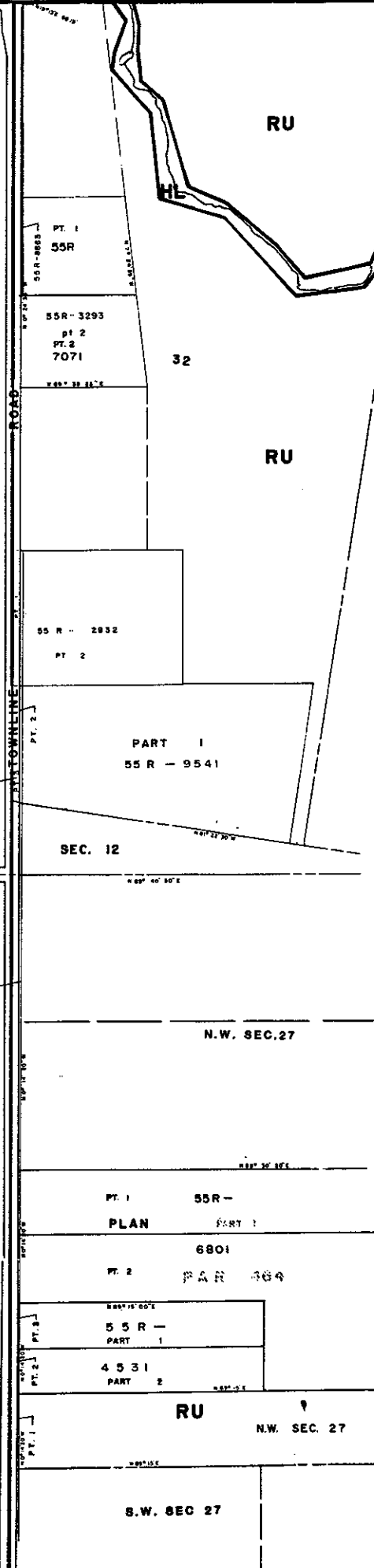


# MAP 2A

## LEGEND

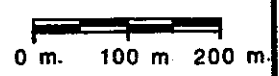
THE FOLLOWING IS FOR INFORMATION ONLY AND DOES NOT FORM PART OF THE BY-LAW. ORIGINALLY ENACTED BY BY-LAW 177-1983 PASSED JULY 26, 1983 AMENDED BY BY-LAW 50-1986 PASSED MARCH 11, 1986 EFFECTIVE DATE MARCH 16 1987 REVISION DATES: APRIL 1992

OLIVER TOWNSHIP



2B

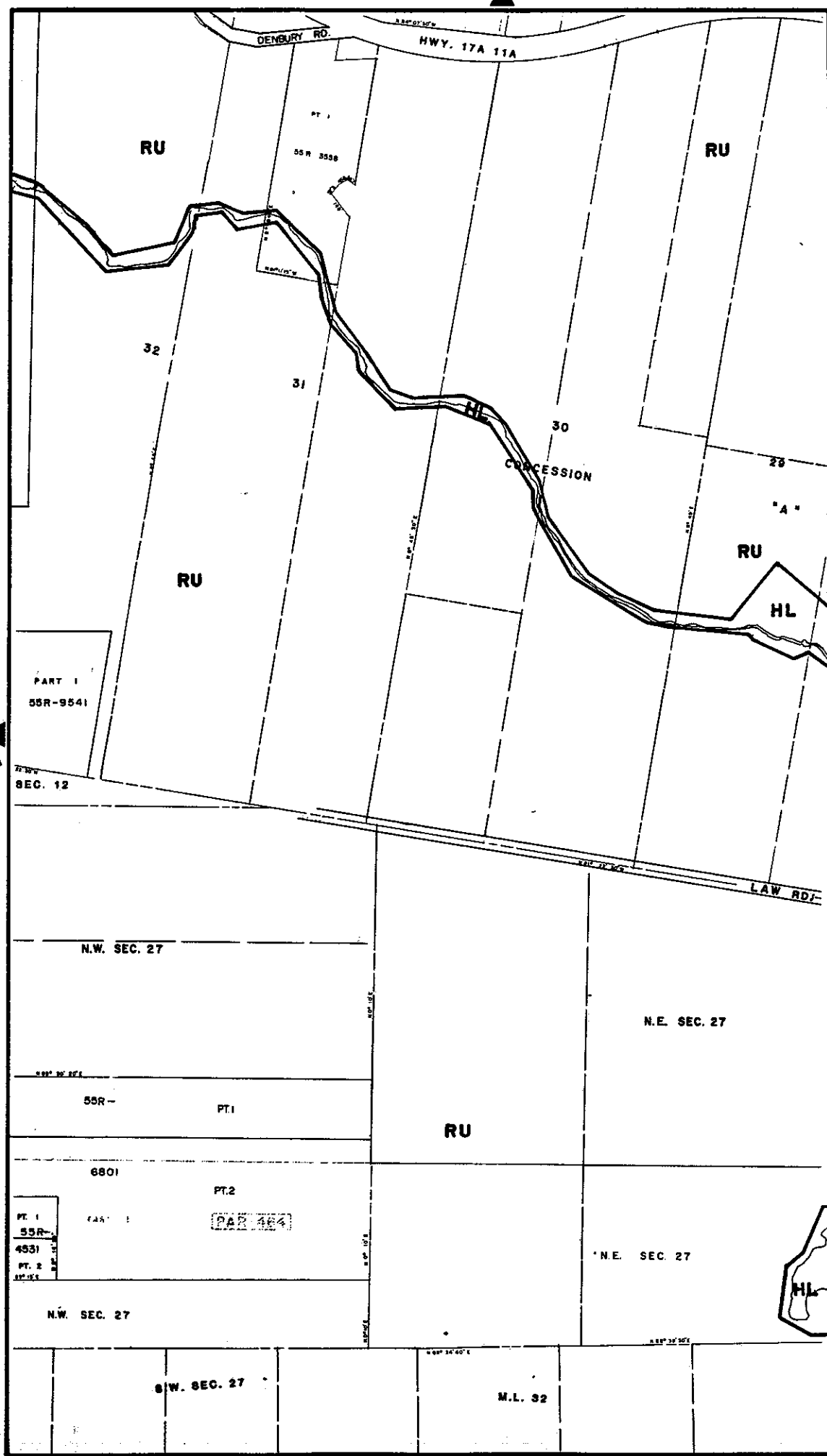
map boundary



# MAP 2B

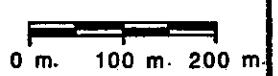
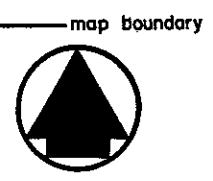
## LEGEND

THE FOLLOWING IS FOR INFORMATION ONLY AND DOES NOT FORM PART OF THE BY-LAW. ORIGINALLY ENACTED BY BY-LAW 177-1983 PASSED JULY 26, 1983 AMENDED BY BY-LAW 50-1986 PASSED MARCH 11, 1986 EFFECTIVE DATE MARCH 16 1987 REVISION DATES: APRIL 1992



2 A

2 C



# MAP 2C

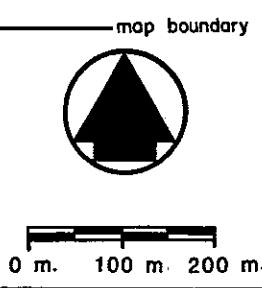
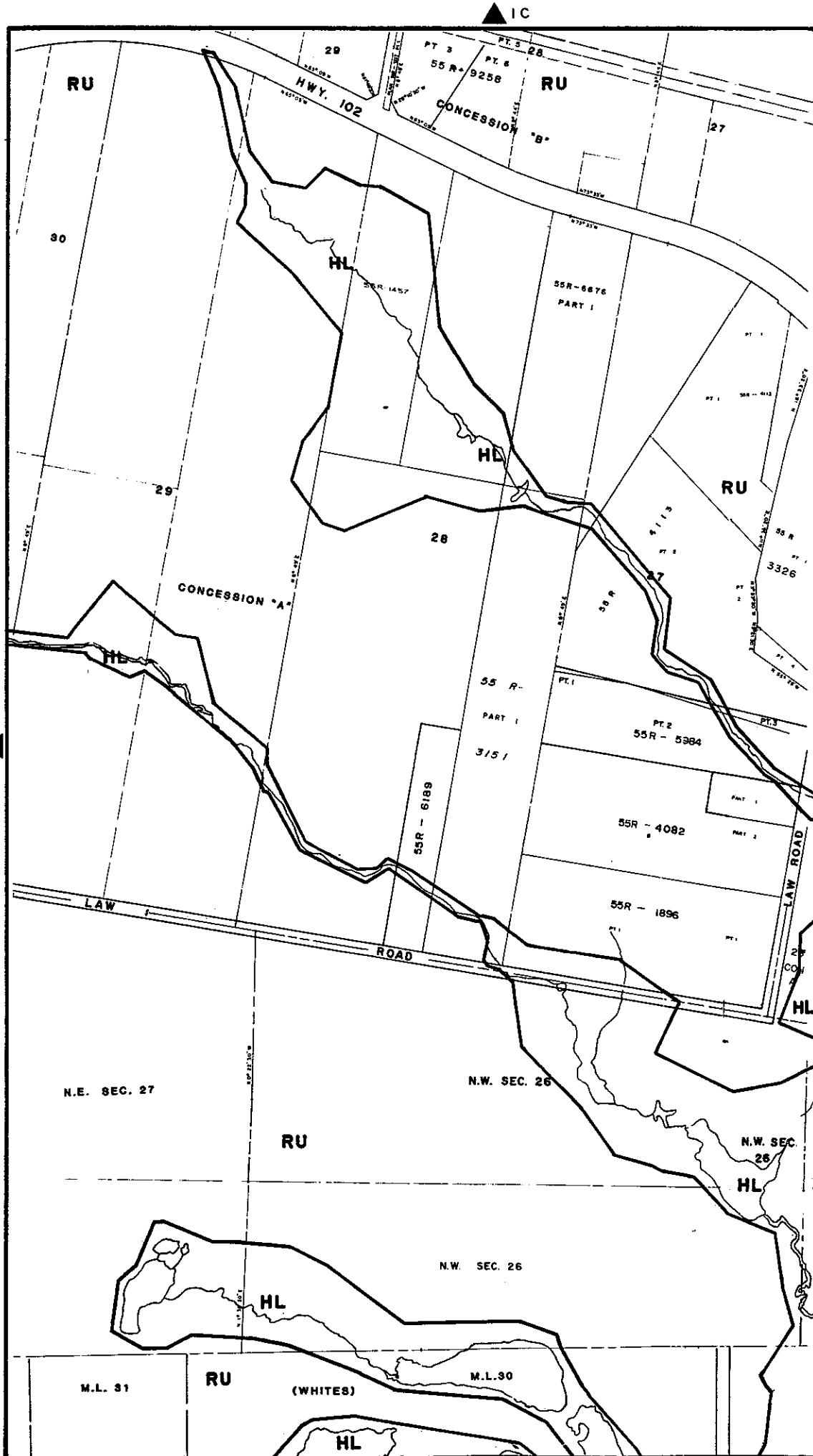
## LEGEND

THE FOLLOWING IS FOR INFORMATION ONLY AND DOES NOT FORM PART OF THE BY-LAW.

ORIGINALLY ENACTED BY BY-LAW 177-1983  
PASSED JULY 26, 1983  
AMENDED BY BY-LAW 50-1986  
PASSED MARCH 11, 1986  
EFFECTIVE DATE MARCH 16 1987

REVISION DATES:

APRIL 1992



1 D

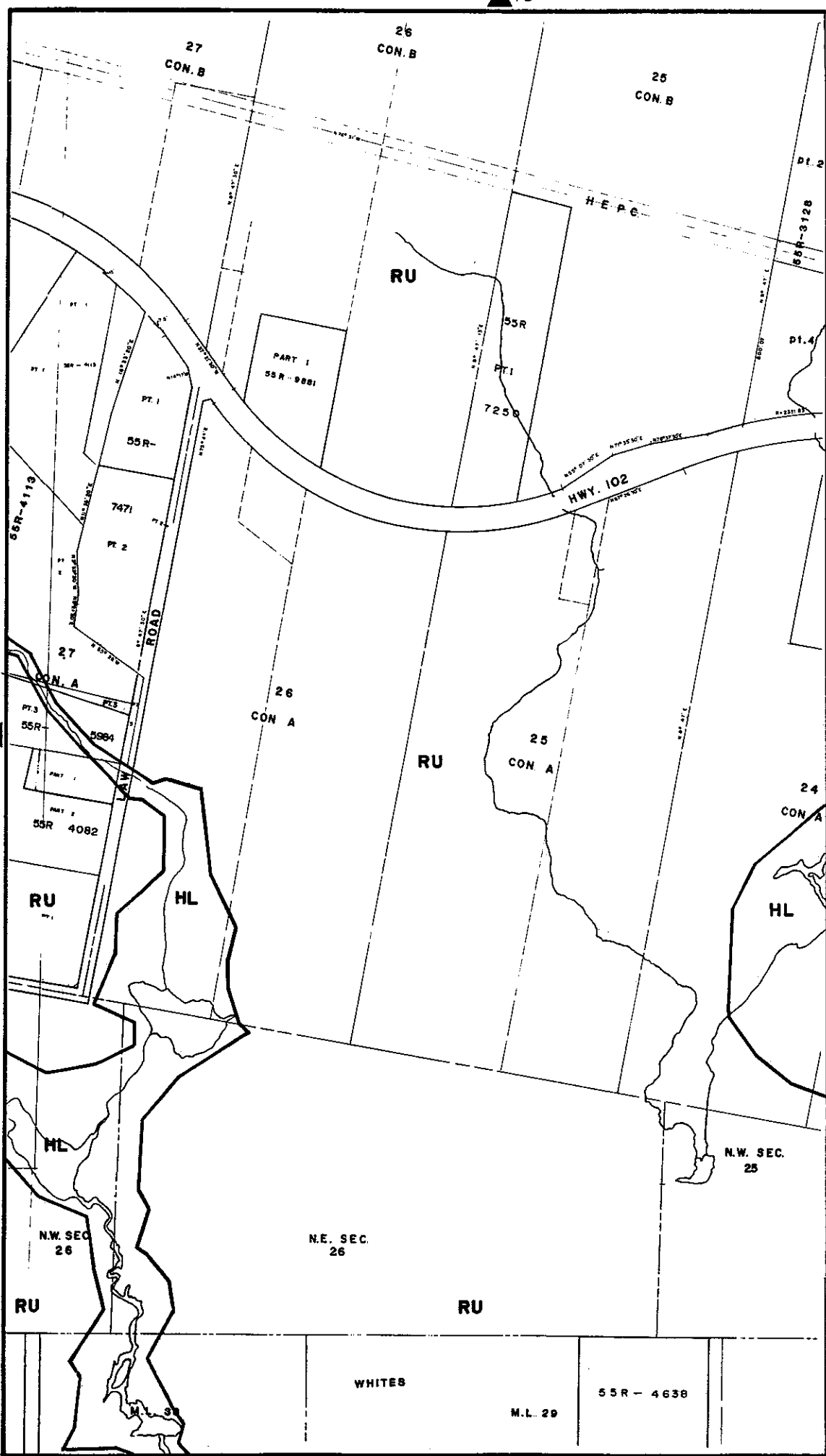
# MAP 2D

## LEGEND

THE FOLLOWING IS FOR INFORMATION ONLY AND DOES NOT FORM PART OF THE BY-LAW.

ORIGINALLY ENACTED BY BY-LAW 177-1983  
PASSED JULY 26, 1983  
AMENDED BY BY-LAW 50-1986  
PASSED MARCH 11, 1986  
EFFECTIVE DATE MARCH 16 1987

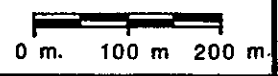
REVISION DATES:  
APRIL 1992



2 C

2 E

map boundary



WHITES

M.L. 29

55R - 4638

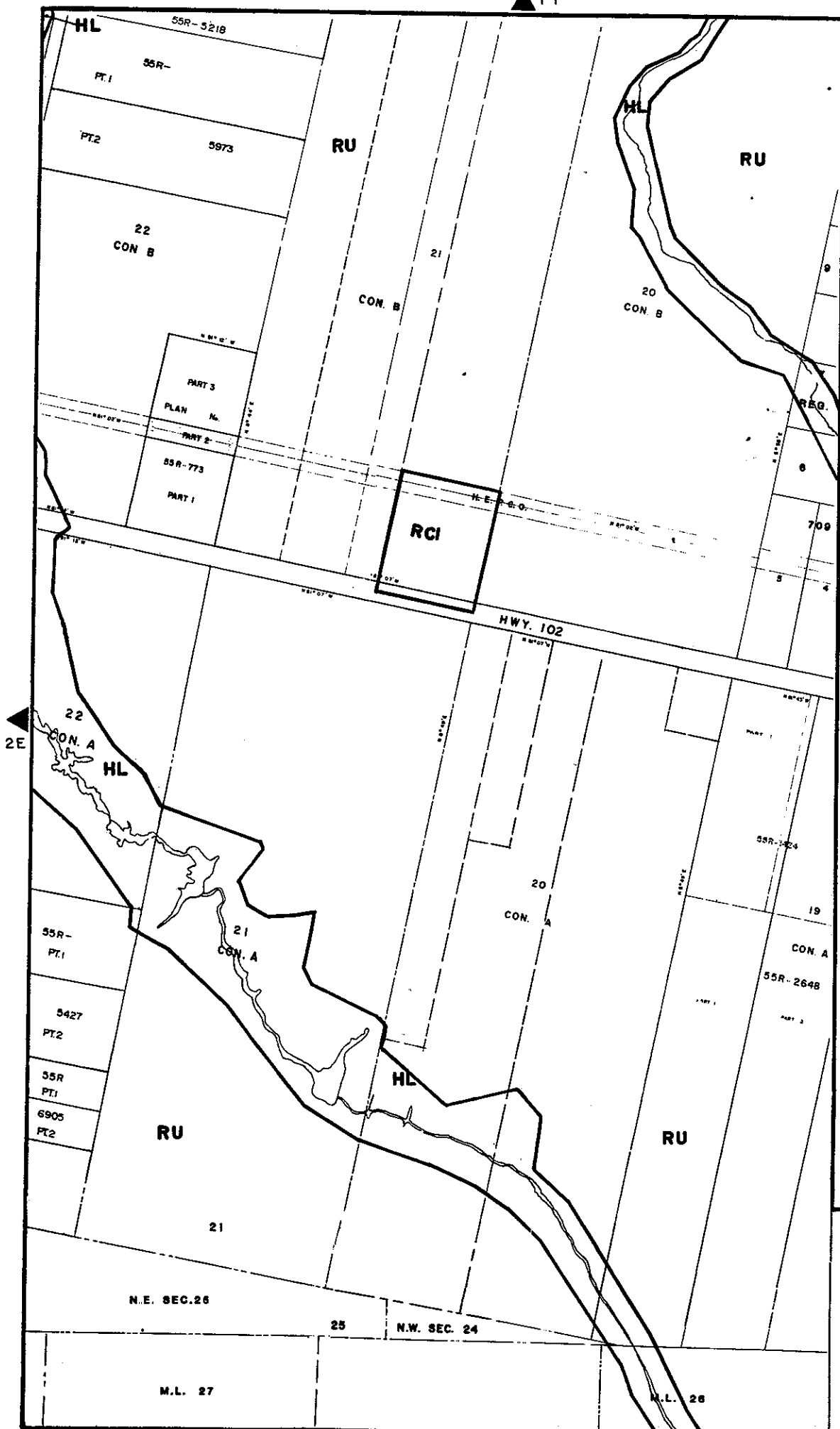
2 D



# MAP 2F

## LEGEND

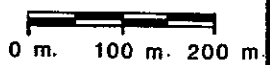
THE FOLLOWING IS FOR INFORMATION ONLY AND DOES NOT FORM PART OF THE BY-LAW, ORIGINALLY ENACTED BY BY-LAW 177-1983 PASSED JULY 26, 1983 AMENDED BY BY-LAW 50-1986 PASSED MARCH 11, 1986 EFFECTIVE DATE MARCH 16 1987 REVISION DATES: APRIL 1992



2E

2G

map boundary

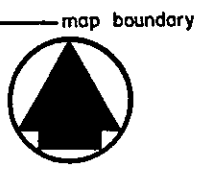
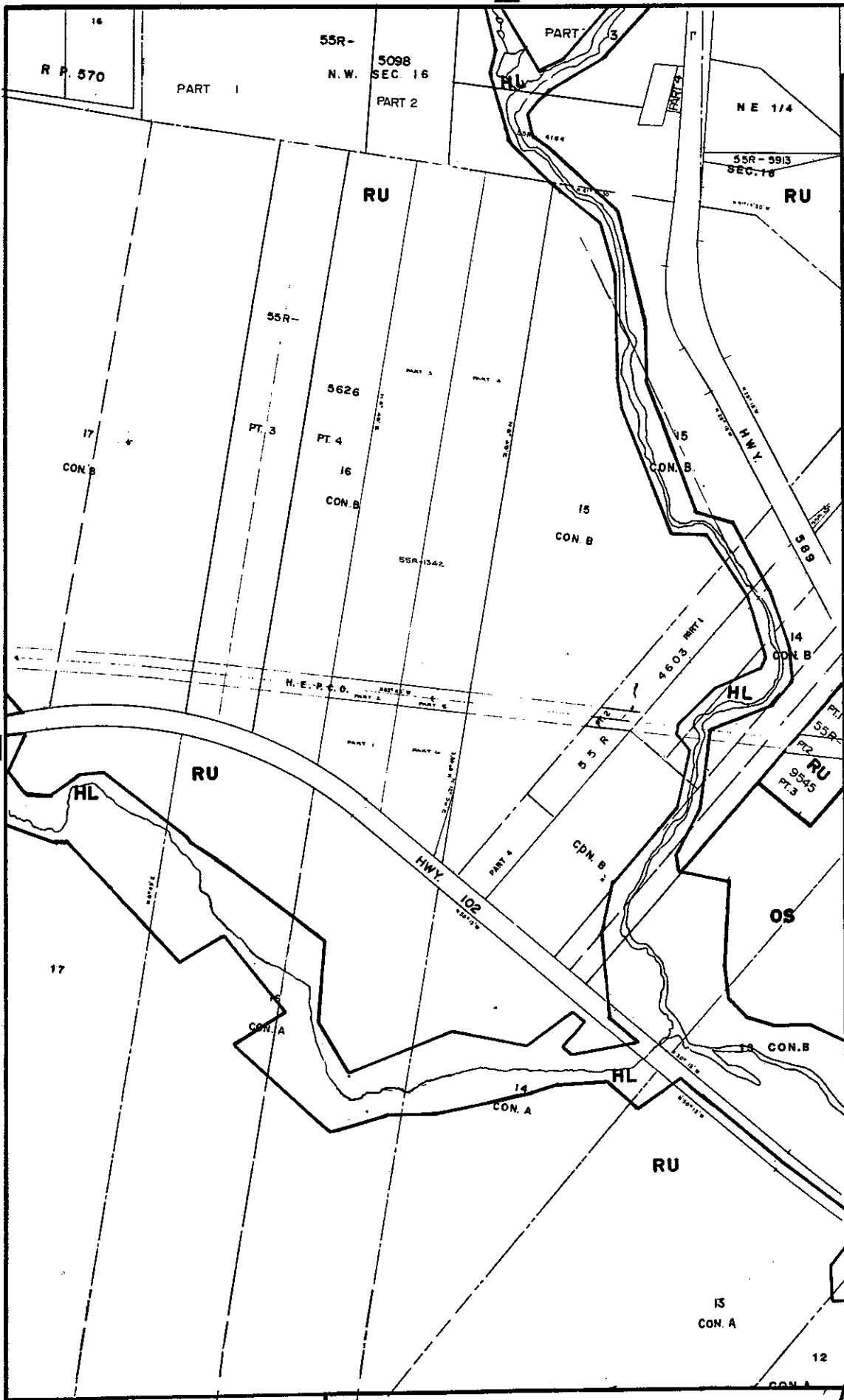




# MAP 2H

## LEGEND

THE FOLLOWING IS FOR INFORMATION ONLY AND DOES NOT FORM PART OF THE BY-LAW. ORIGINALLY ENACTED BY BY-LAW 177-1983 PASSED JULY 26, 1983 AMENDED BY BY-LAW 50-1986 PASSED MARCH 11, 1986 EFFECTIVE DATE MARCH 16 1987 REVISION DATES: APRIL 1992 DECEMBER 1993



0 m. 100 m 200 m.

CIN  
55R-2348

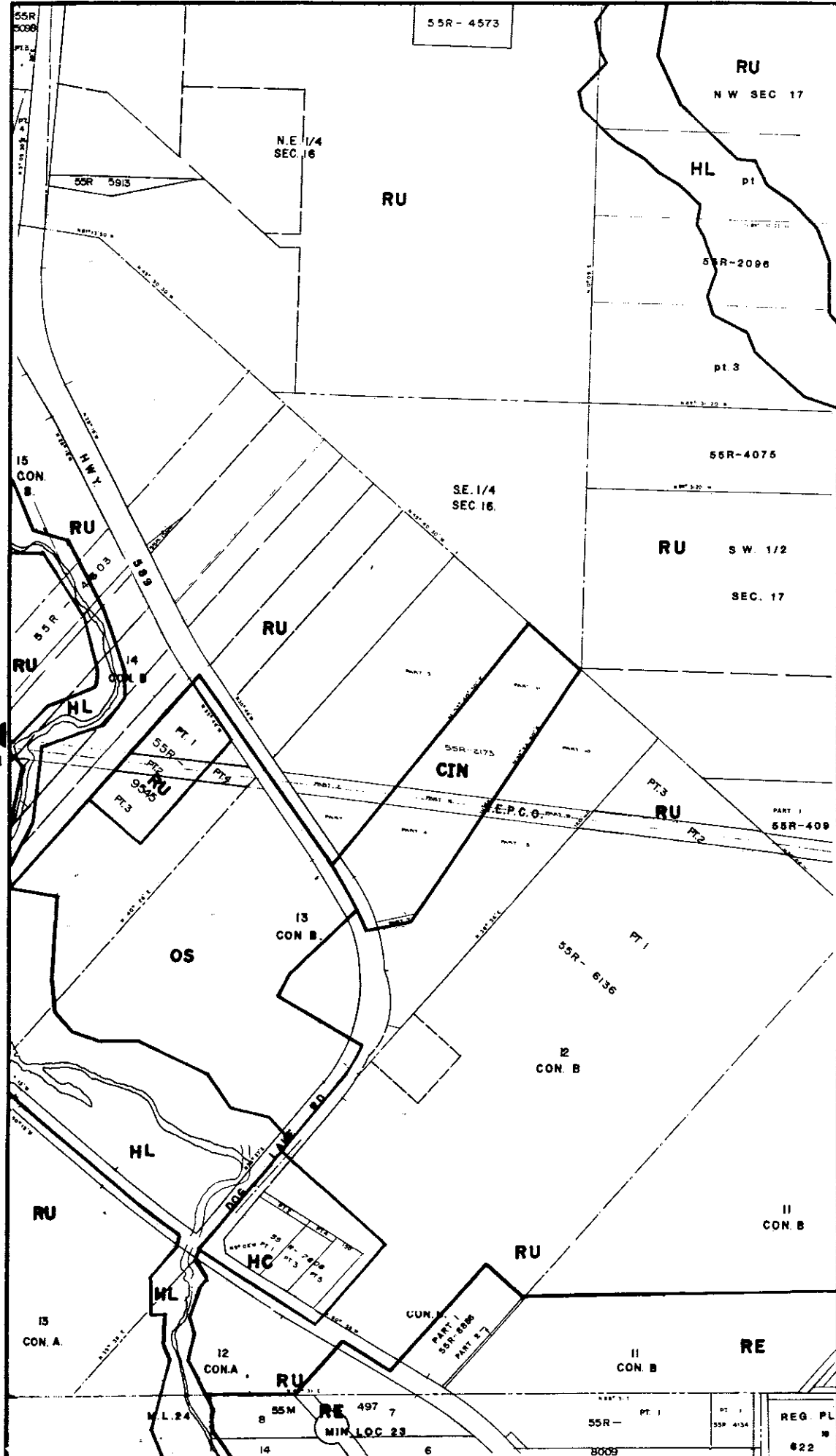
RE  
M.L.24

M.L. 25

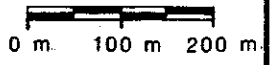
# MAP 2 I

## LEGEND

THE FOLLOWING IS FOR INFORMATION ONLY AND DOES NOT FORM PART OF THE BY-LAW. ORIGINALLY ENACTED BY BY-LAW 177-1983 PASSED JULY 26, 1983 AMENDED BY BY-LAW 50-1986 PASSED MARCH 11, 1986 EFFECTIVE DATE MARCH 16 1987 REVISION DATES:  
 APRIL 1992  
 DECEMBER 1992  
 DECEMBER 1993  
 APRIL 2003



2J

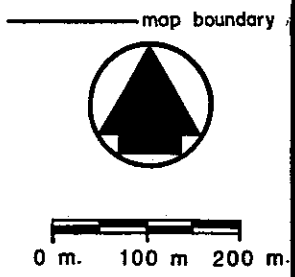
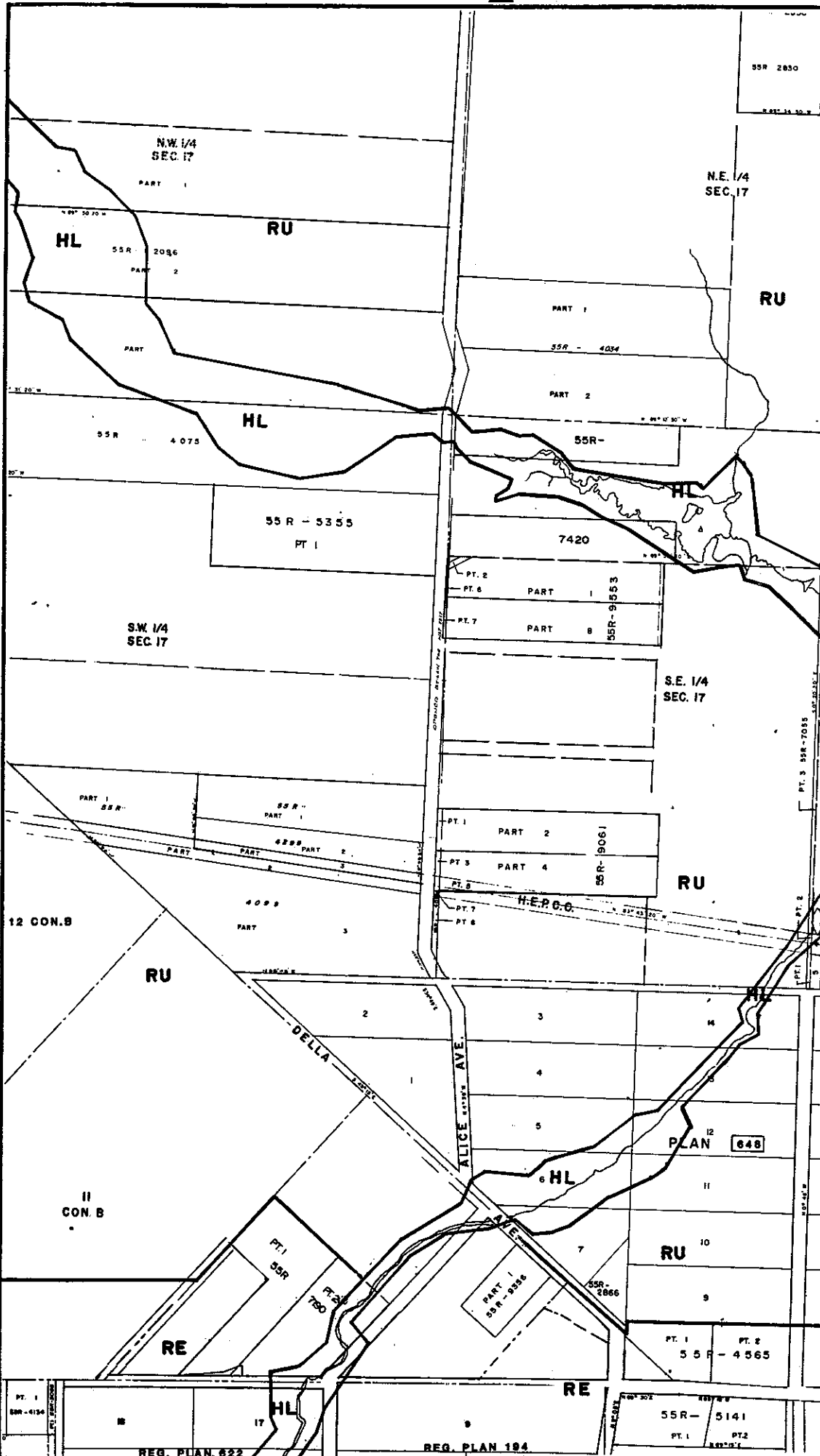


# MAP 2J

## LEGEND

THE FOLLOWING IS FOR INFORMATION ONLY AND DOES NOT FORM PART OF THE BY-LAW.

ORIGINALLY ENACTED BY BY-LAW 177-1983  
 PASSED JULY 26, 1983  
 AMENDED BY BY-LAW 50-1986  
 PASSED MARCH 11, 1986  
 EFFECTIVE DATE MARCH 16 1987  
 REVISION DATES:  
 APRIL 1992



REG. PLAN 622

REG. PLAN 194

55R-5141  
 PT. 1  
 PT. 2

PT. 1  
 PT. 2  
 55R-4565

RU 10

PLAN 12  
 PLAN 648

RU

S.E. 1/4  
 SEC. 17

PT. 2  
 PT. 6  
 PART 1  
 PART 8  
 55R-9553

7420

PART 1  
 55R-4034  
 PART 2

RU

N.E. 1/4  
 SEC. 17

55R 2850

N.W. 1/4  
 SEC. 17

HL

RU

HL

55R-4075

55R-5355  
 PT. 1

S.W. 1/4  
 SEC. 17

PART 1  
 55R

55R  
 PART 1

4098  
 PART 2

PT. 1  
 PART 2

PT. 3  
 PART 4

PT. 5  
 H.E.P.O.

PT. 7  
 PT. 8

RU

12 CON. B

11  
 CON. B

RE

PT. 1  
 55R

PT. 2  
 55R-750

PART 1  
 55R-5356

55R-2866

RU

PT. 1

PT. 2

55R-4565

HL

RE

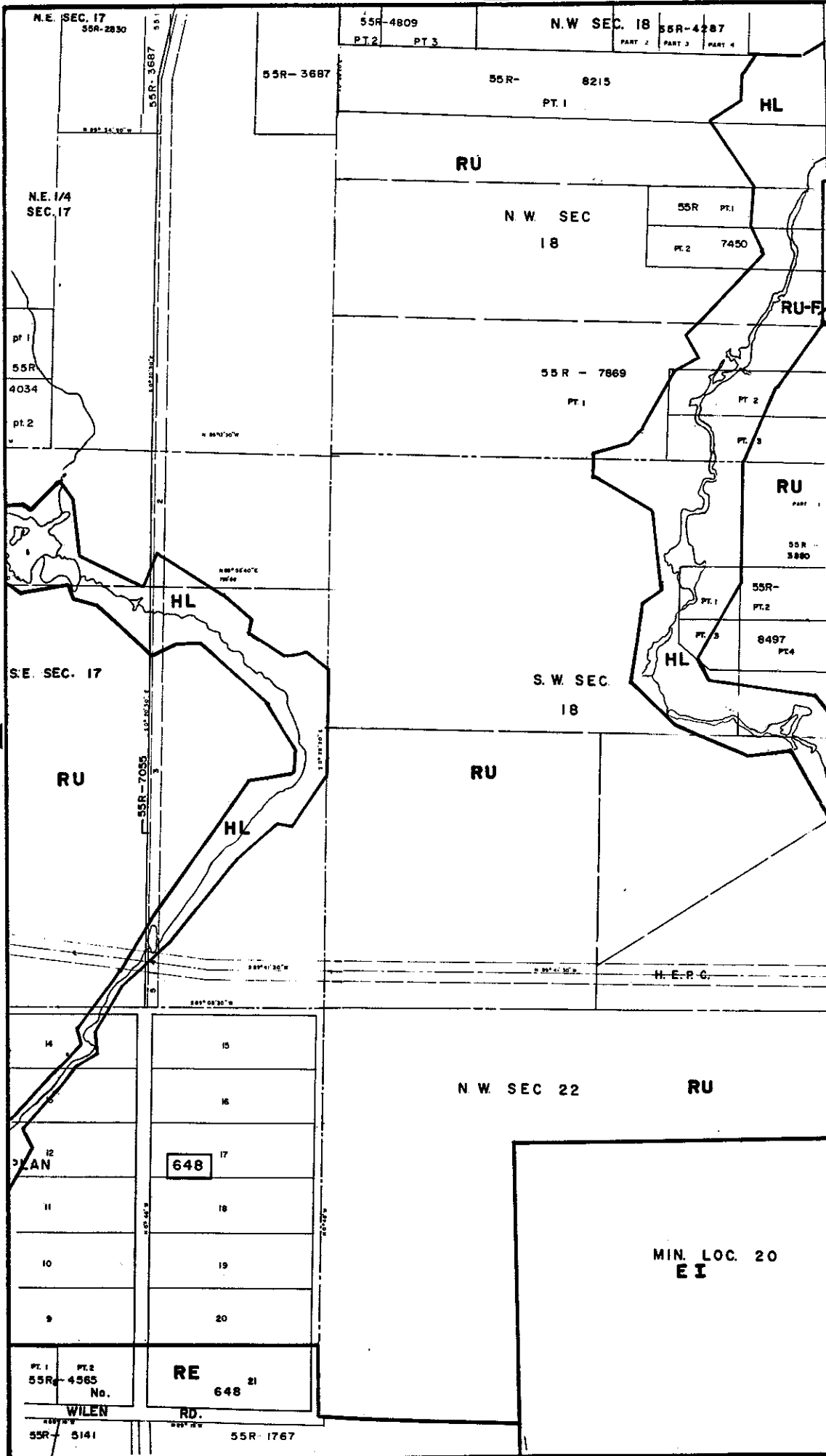
21

2K

# MAP 2K

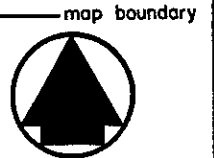
## LEGEND

THE FOLLOWING IS FOR INFORMATION ONLY AND DOES NOT FORM PART OF THE BY-LAW. ORIGINALLY ENACTED BY BY-LAW 177-1983 PASSED JULY 26, 1983 AMENDED BY BY-LAW 50-1986 PASSED MARCH 11, 1986 EFFECTIVE DATE MARCH 16 1987 REVISION DATES: APRIL 1992



2J

2L



0 m. 100 m 200 m.

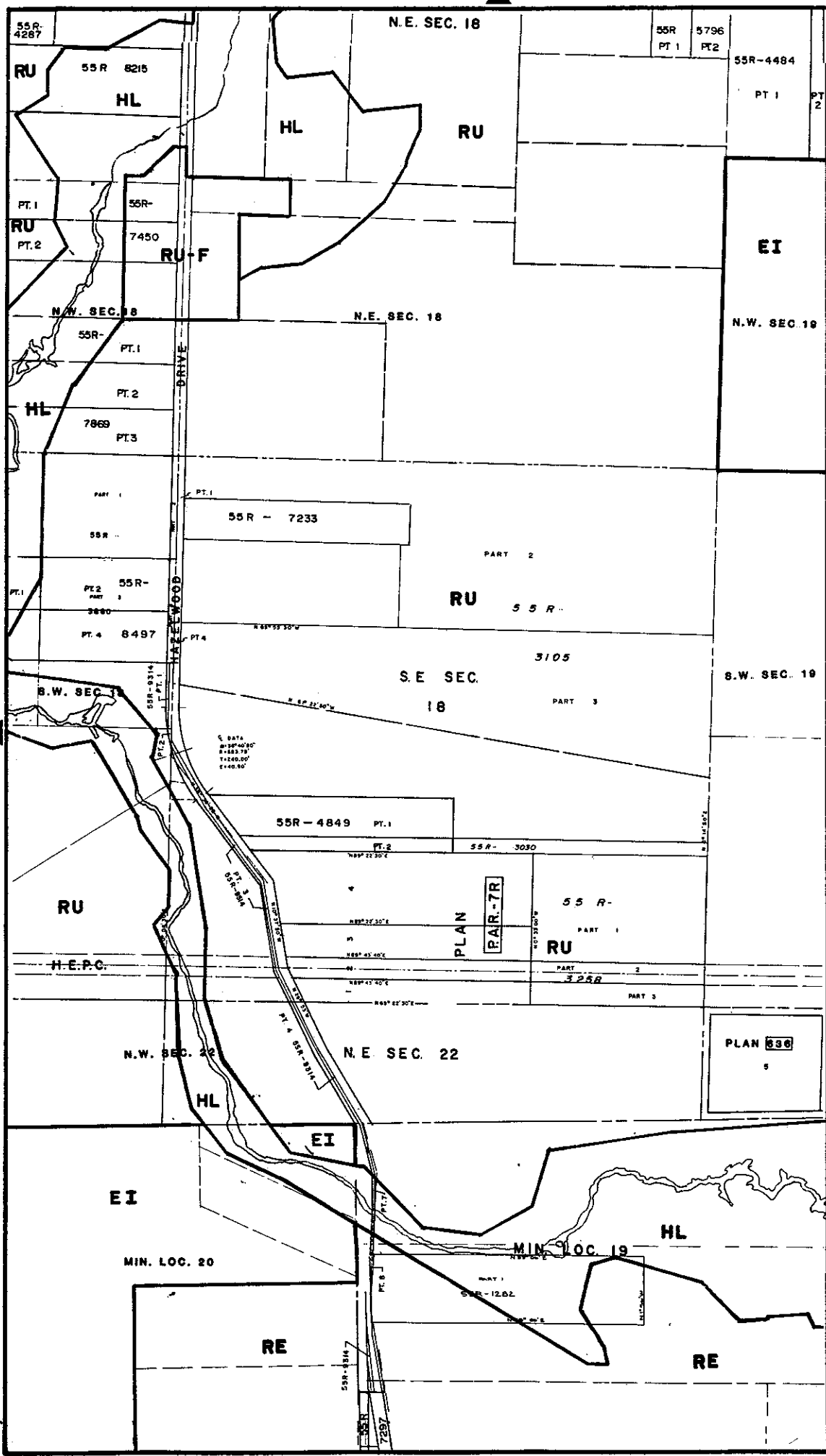
# MAP 2L

## LEGEND

THE FOLLOWING IS FOR INFORMATION ONLY AND DOES NOT FORM PART OF THE BY-LAW.

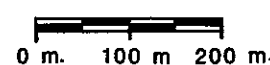
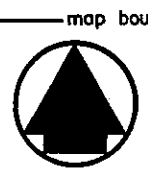
ORIGINALLY ENACTED BY BY-LAW 177-1983  
 PASSED JULY 26, 1983  
 AMENDED BY BY-LAW 50-1986  
 PASSED MARCH 11, 1986  
 EFFECTIVE DATE MARCH 16 1987

REVISION DATES:  
 APRIL 1992



2K

2M



map boundary



# MAP 2N

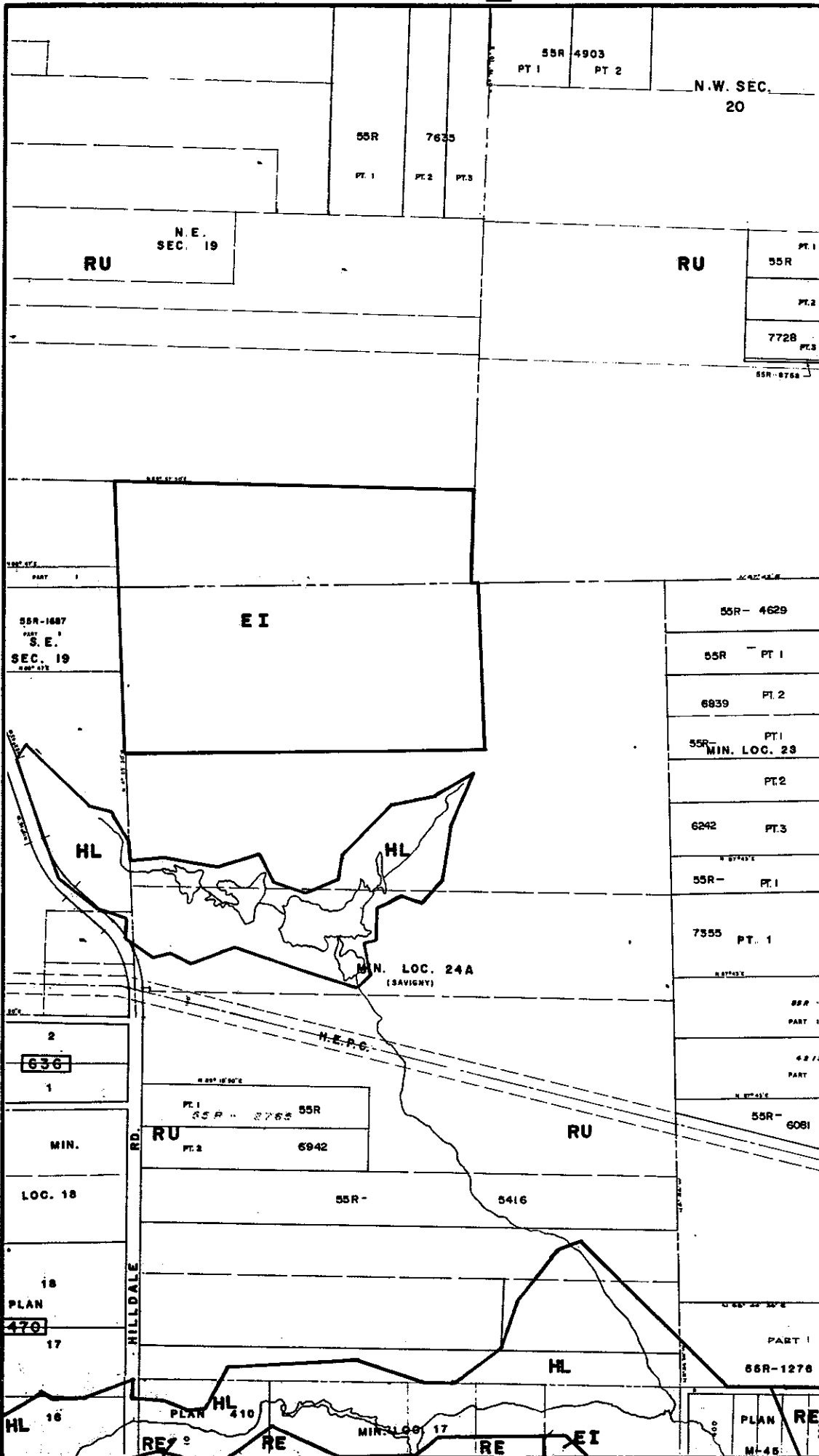
## LEGEND

THE FOLLOWING IS FOR INFORMATION ONLY AND DOES NOT FORM PART OF THE BY-LAW.

ORIGINALLY ENACTED BY BY-LAW 177-1983 PASSED JULY 26, 1983 EFFECTIVE DATE MARCH 16, 1987

REVISION DATES: ORIGINALLY ENACTED BY BY-LAW 177-1983 PASSED JULY 26, 1983 AMENDED BY BY-LAW 50-1986 PASSED MARCH 11, 1986 EFFECTIVE DATE MARCH 16 1987

REVISION DATES: APRIL 1992



2 M

2-C

map boundary



0 m. 100 m. 200 m.



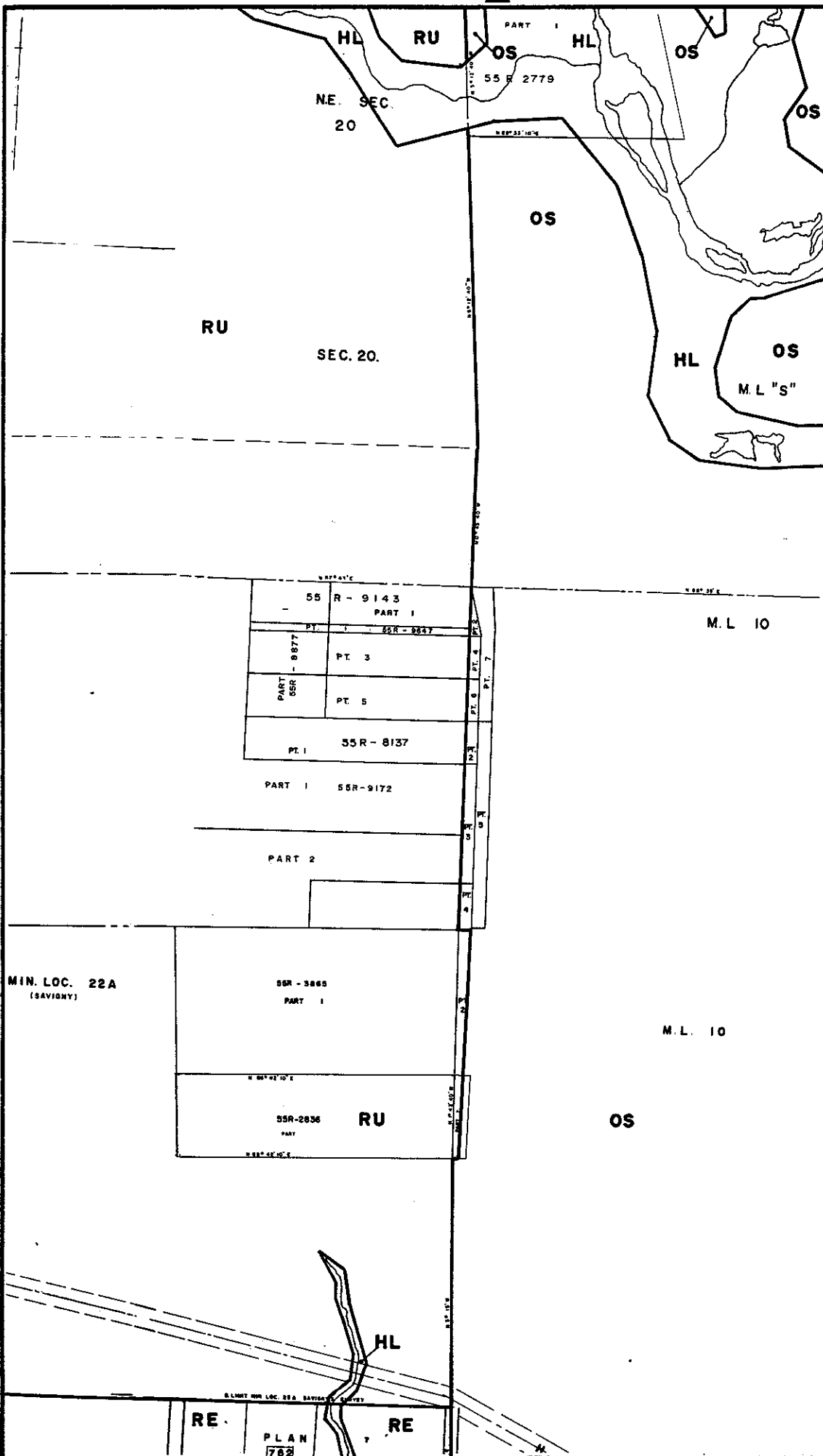
# MAP 2P

## LEGEND

THE FOLLOWING IS FOR INFORMATION ONLY AND DOES NOT FORM PART OF THE BY-LAW.

ORIGINALLY ENACTED  
BY BY-LAW 177-1983  
PASSED JULY 26, 1983  
EFFECTIVE DATE MARCH 16, 1987  
REVISION DATES:

APRIL 1992



BY-LAW 177 - 1983  
PASSED THIS 26<sup>th</sup> DAY OF  
JULY 1983

map boundary



0 m. 100 m. 200 m.

RE PLAN 7 RE

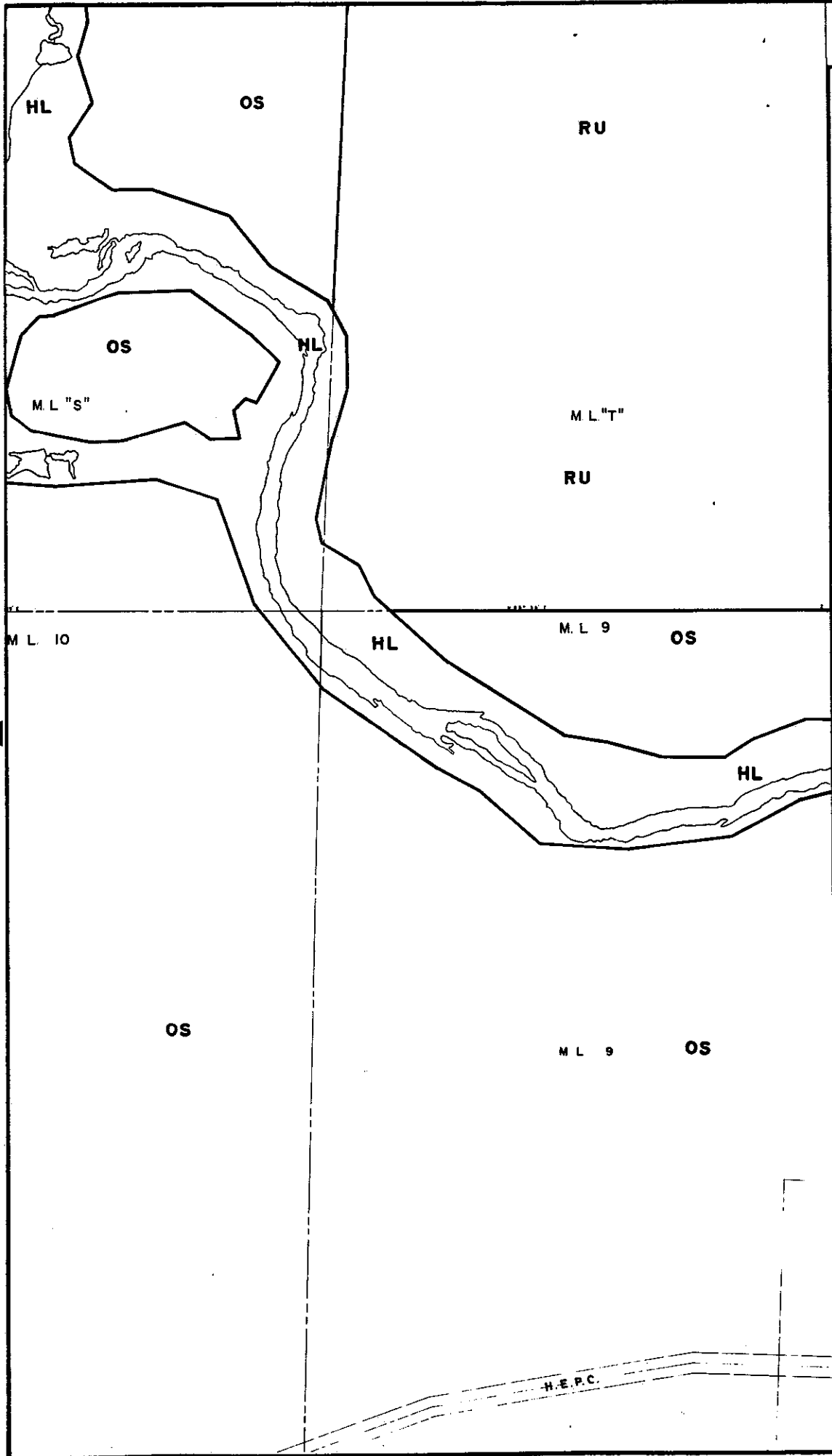
1 Q

# MAP 2Q

## LEGEND

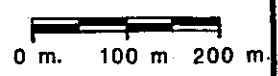
THE FOLLOWING IS FOR INFORMATION ONLY AND DOES NOT FORM PART OF THE BY-LAW.

ORIGINALLY ENACTED  
BY BY-LAW 177-1983  
PASSED JULY 26, 1983  
EFFECTIVE DATE MARCH 16, 1987  
REVISION DATES:



BY-LAW 177 - 1983  
PASSED THIS 26<sup>th</sup> DAY OF  
JULY 1983

— map boundary



2P

2R

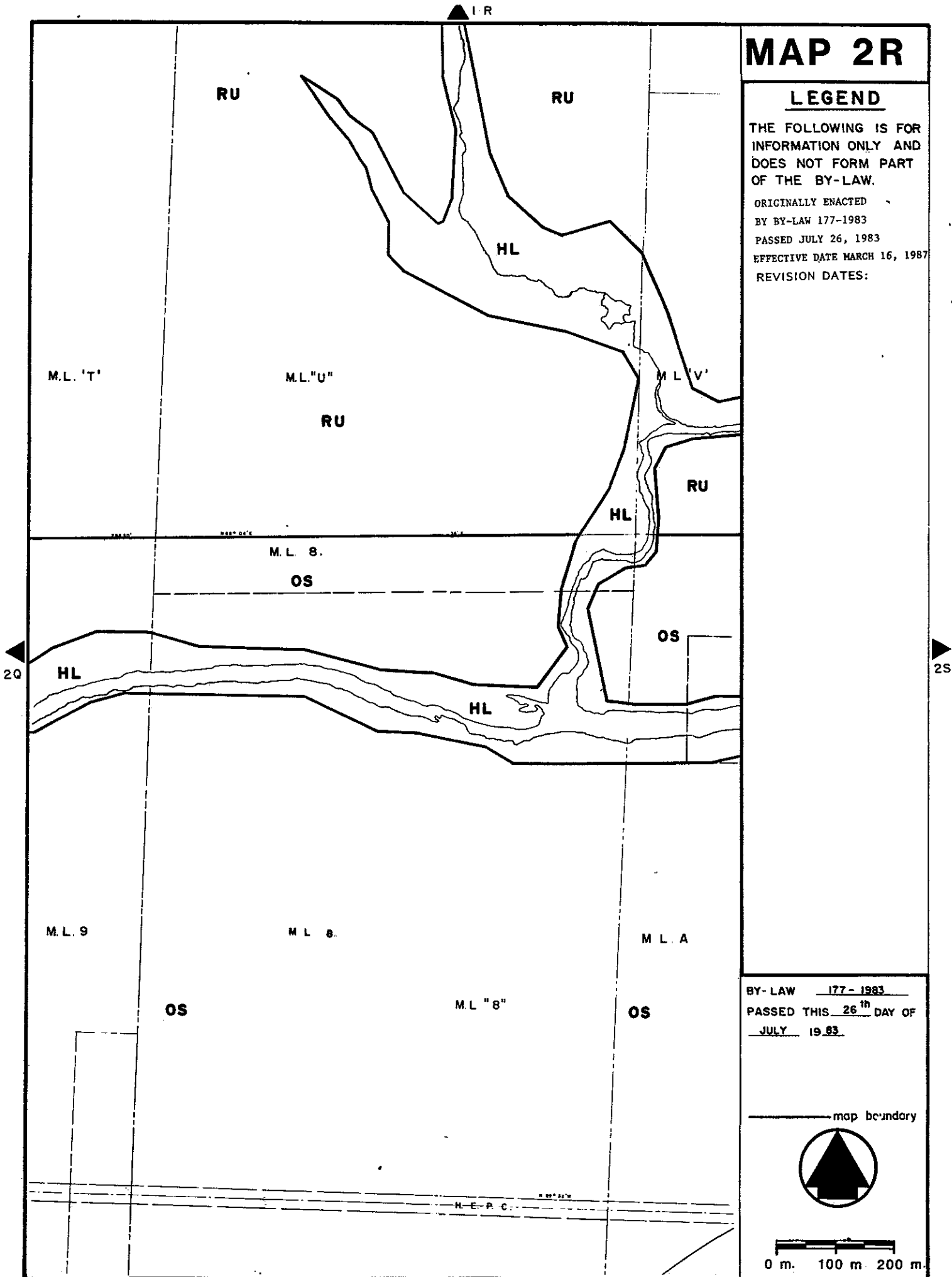
3 Q

# MAP 2R

## LEGEND

THE FOLLOWING IS FOR INFORMATION ONLY AND DOES NOT FORM PART OF THE BY-LAW.

ORIGINALLY ENACTED  
BY BY-LAW 177-1983  
PASSED JULY 26, 1983  
EFFECTIVE DATE MARCH 16, 1987  
REVISION DATES:



# MAP 2S

## LEGEND

THE FOLLOWING IS FOR INFORMATION ONLY AND DOES NOT FORM PART OF THE BY-LAW.

ORIGINALLY ENACTED  
 BY BY-LAW 177-1983  
 PASSED JULY 26, 1983  
 EFFECTIVE DATE MARCH 16, 1987  
 REVISION DATES:

BY-LAW 177-1983  
 PASSED THIS 26<sup>th</sup> DAY OF  
JULY 1983

— map boundary



0 m. 100 m. 200 m.



# MAP 2T

## LEGEND

THE FOLLOWING IS FOR INFORMATION ONLY AND DOES NOT FORM PART OF THE BY-LAW.

ORIGINALLY ENACTED

BY BY-LAW 177-1983

PASSED JULY 26, 1983

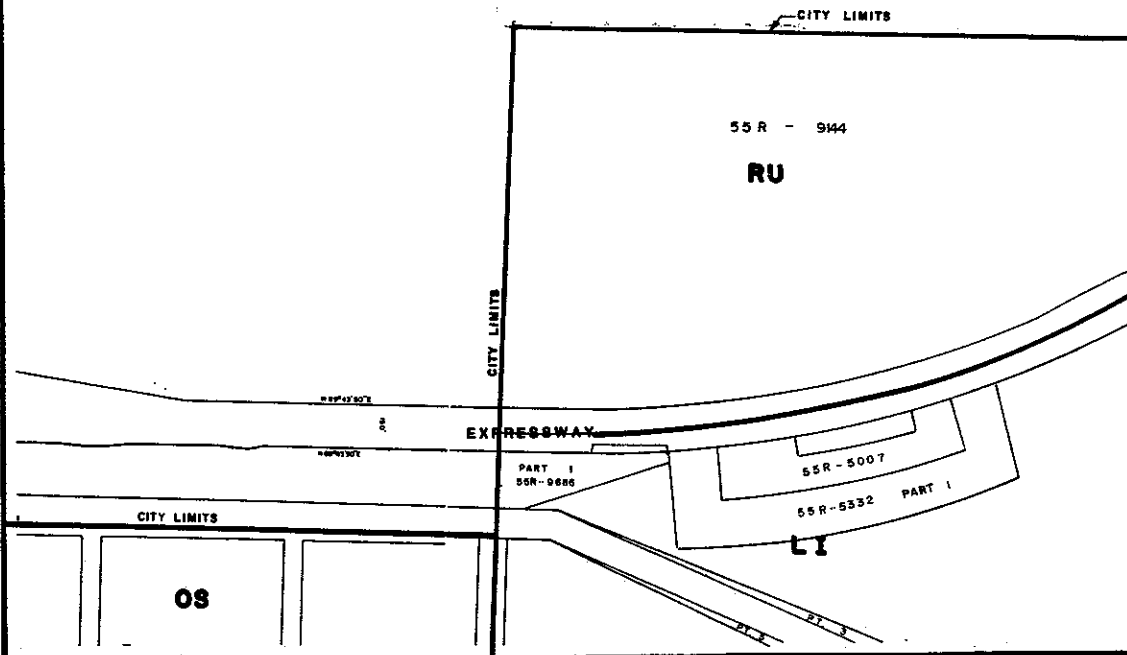
EFFECTIVE DATE MARCH 16, 1987

REVISION DATES:

DECEMBER 1992

2S

2U



BY-LAW 177-1983  
PASSED THIS 26<sup>th</sup> DAY OF  
JULY 1983

map boundary



0 m. 100 m 200 m.

3T

# MAP 2U

## LEGEND

THE FOLLOWING IS FOR  
INFORMATION ONLY AND  
DOES NOT FORM PART  
OF THE BY-LAW

ORIGINALLY ENACTED  
BY BY-LAW 177-1983  
PASSED JULY 26, 1983  
EFFECTIVE DATE MARCH 16, 1987  
REVISION DATES  
DECEMBER 1992

2T

CITY LIMITS

55R - 9144

PT 1

RU

EXPRESSWAY

CITY LIMITS

LI

BY-LAW 177 - 1983  
PASSED THIS 26<sup>th</sup> DAY OF  
JULY 1983

map boundary



0 m. 100 m. 200 m.

3U