

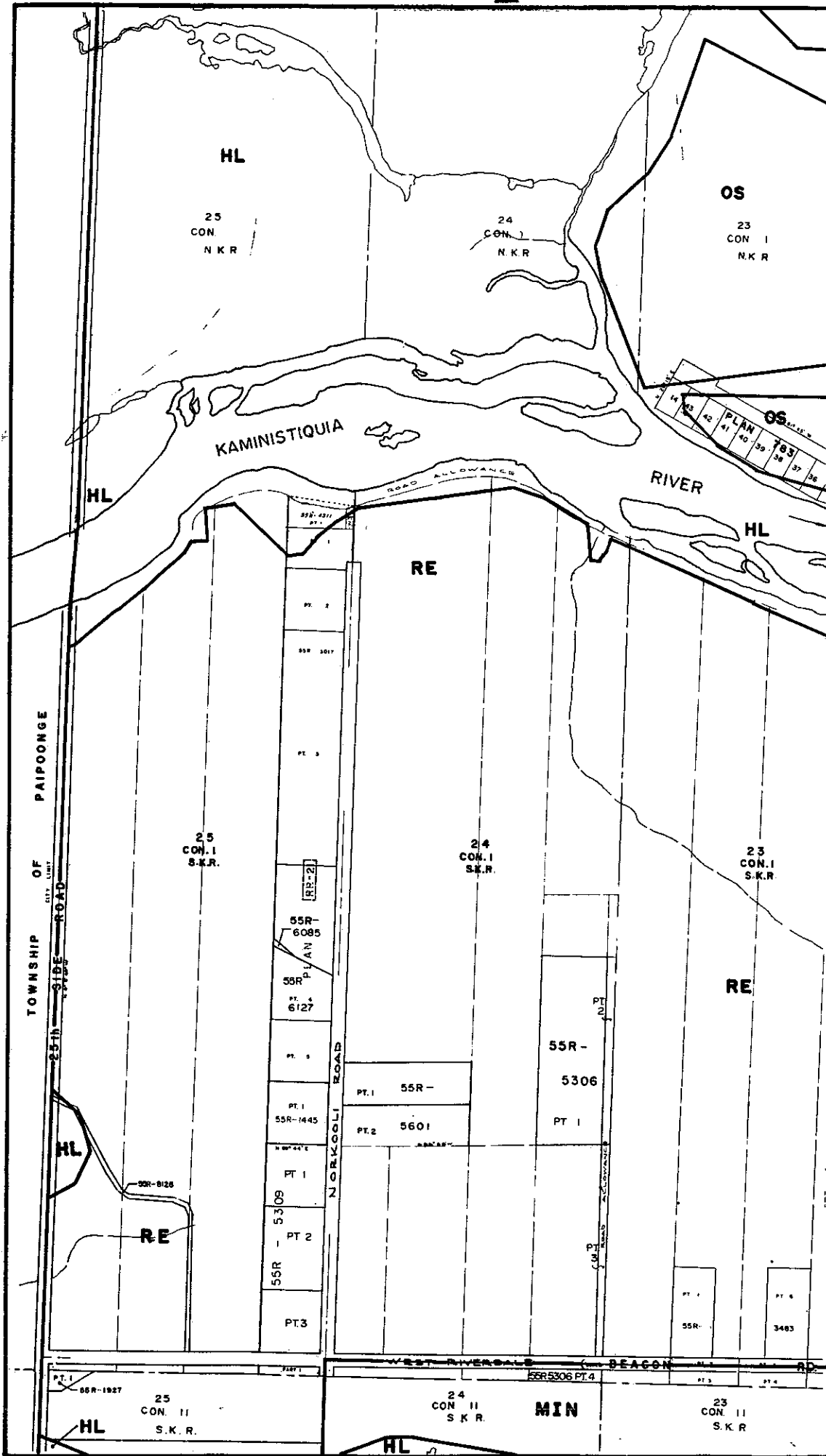
MAP 10D

LEGEND

THE FOLLOWING IS FOR INFORMATION ONLY AND DOES NOT FORM PART OF THE BY-LAW.

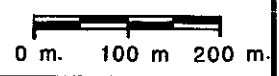
ORIGINALLY ENACTED BY BY-LAW 177-1983
PASSED JULY 26, 1983
AMENDED BY BY-LAW 50-1986
PASSED MARCH 11, 1986
EFFECTIVE DATE MARCH 16 1987
REVISION DATES:

DECEMBER 1991



10 E

map boundary



9E

MAP 10E

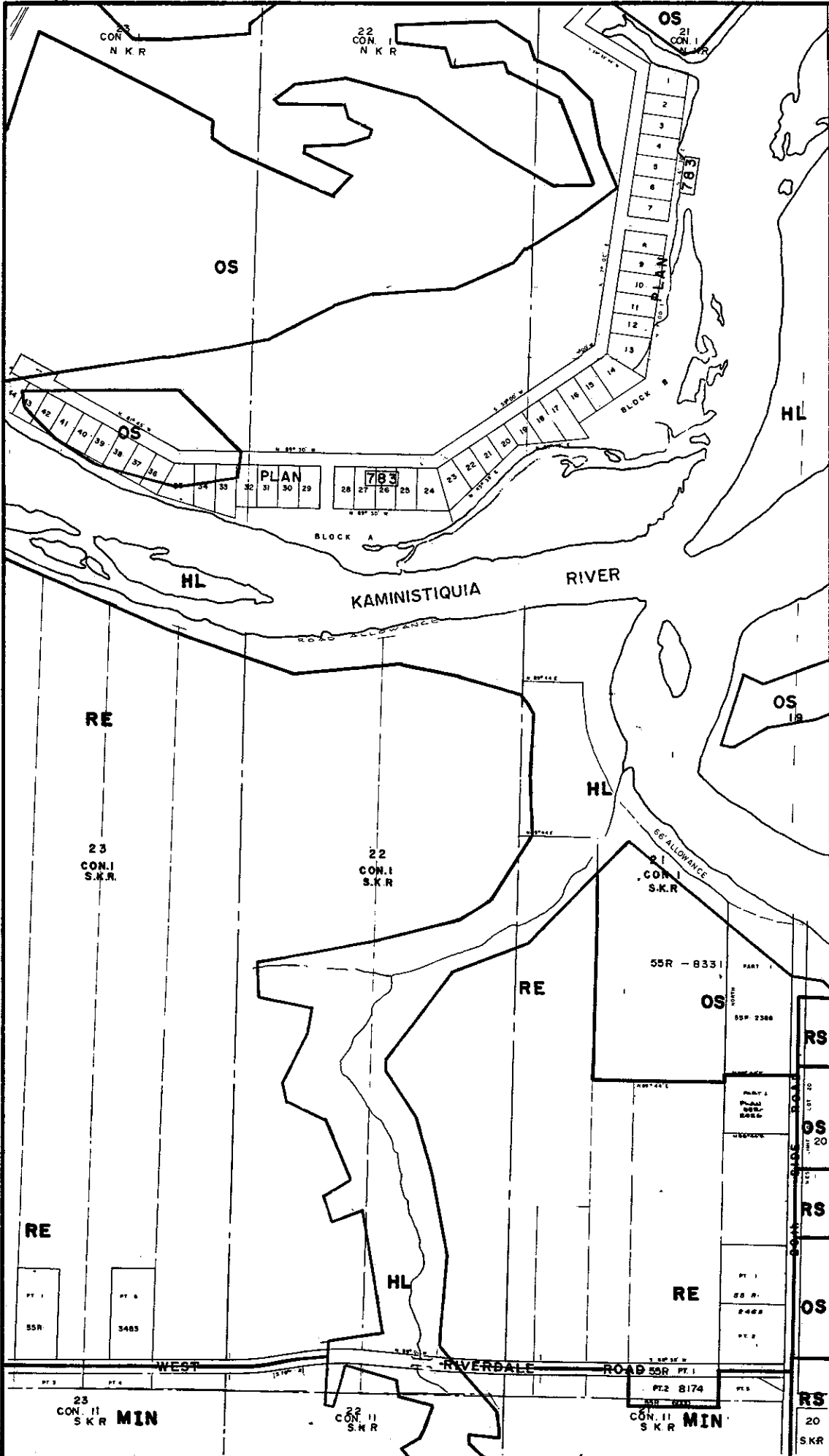
LEGEND

THE FOLLOWING IS FOR INFORMATION ONLY AND DOES NOT FORM PART OF THE BY-LAW.

ORIGINALLY ENACTED BY BY-LAW 177-1983
PASSED JULY 26, 1983
AMENDED BY BY-LAW 50-1986
PASSED MARCH 11, 1986
EFFECTIVE DATE MARCH 16 1987

REVISION DATES:

AUGUST 1990
DECEMBER 1991



10D

10F

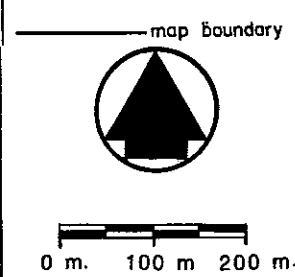
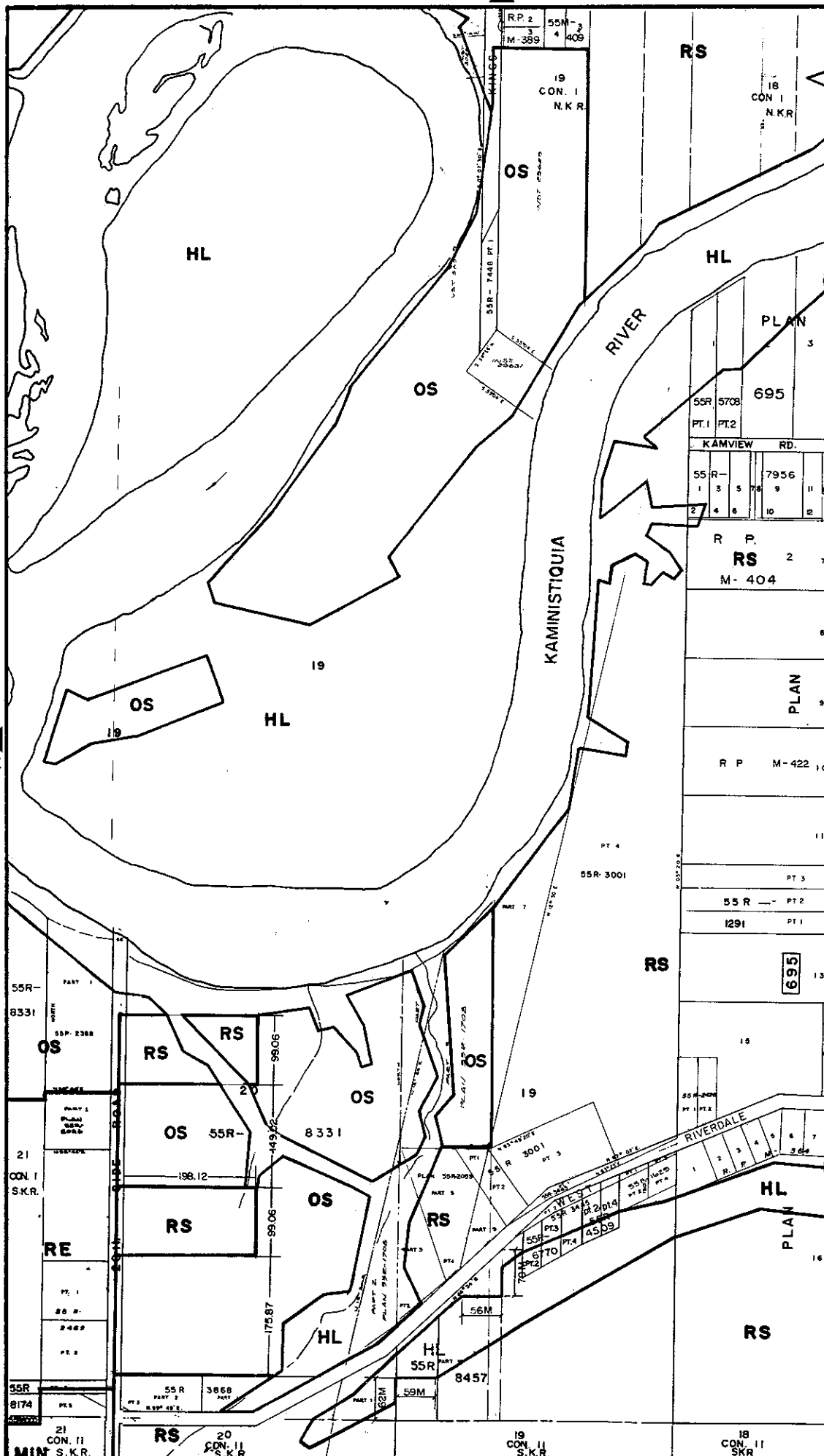


0 m. 100 m 200 m.

MAP 10F

LEGEND

THE FOLLOWING IS FOR INFORMATION ONLY AND DOES NOT FORM PART OF THE BY-LAW. ORIGINALY ENACTED BY BY-LAW 177-1983 PASSED JULY 26, 1983 AMENDED BY BY-LAW 50-1986 PASSED MARCH 11, 1986 EFFECTIVE DATE MARCH 16 1987 REVISION DATES: AUGUST 1990 DECEMBER 1990 DECEMBER 1991



MAP 10G

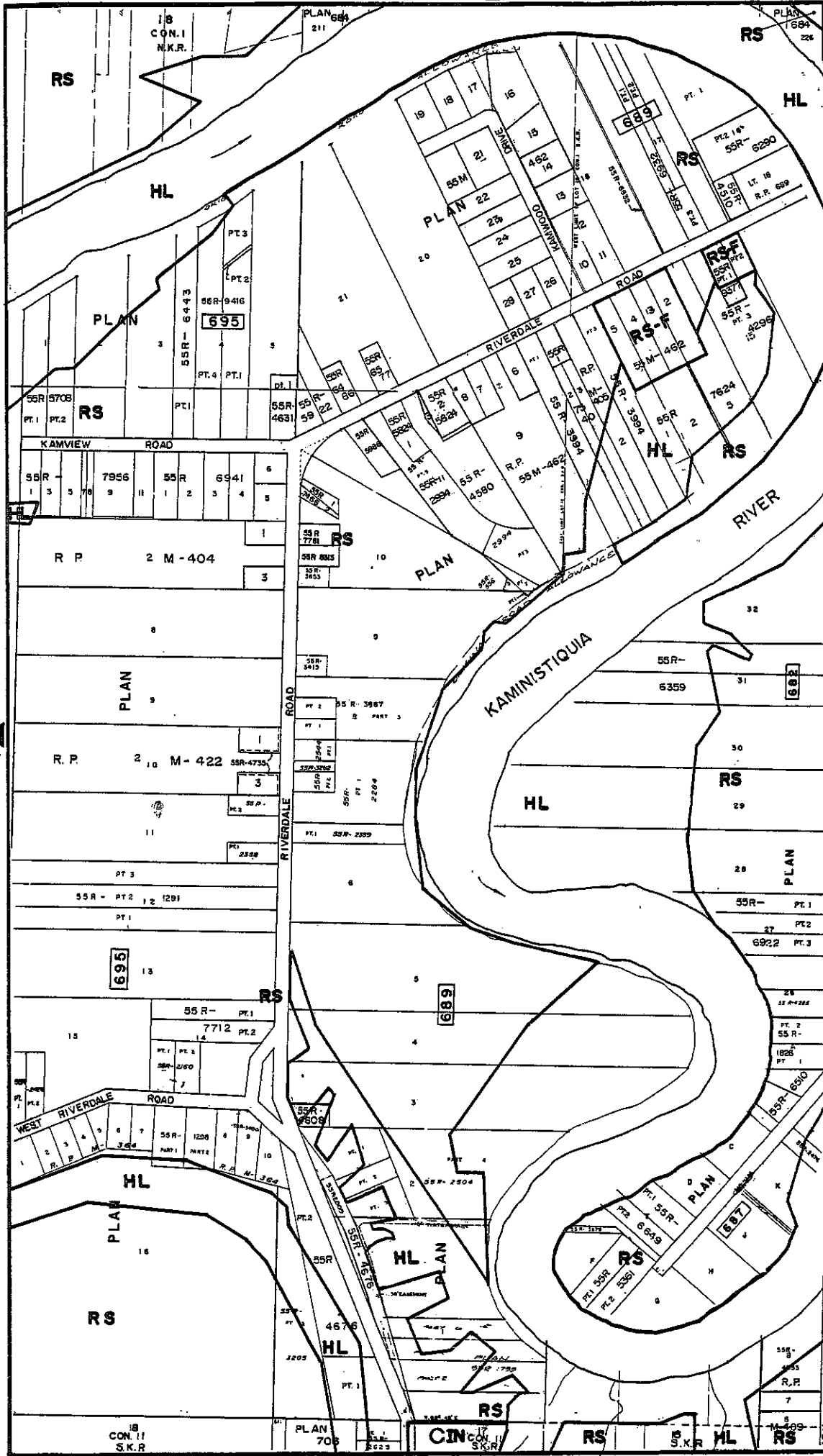
LEGEND

THE FOLLOWING IS FOR INFORMATION ONLY AND DOES NOT FORM PART OF THE BY-LAW.

ORIGINALLY ENACTED BY BY-LAW 177-1983
PASSED JULY 26, 1983
AMENDED BY BY-LAW 50-1986
PASSED MARCH 11, 1986
EFFECTIVE DATE MARCH 16 1987

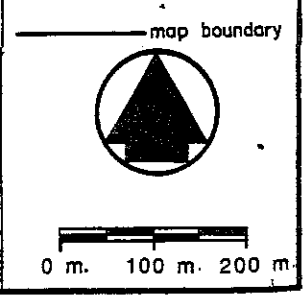
REVISION DATES:

DECEMBER 1987
DECEMBER 1991
AUGUST 2002
AUGUST 2004



IOF

IOH

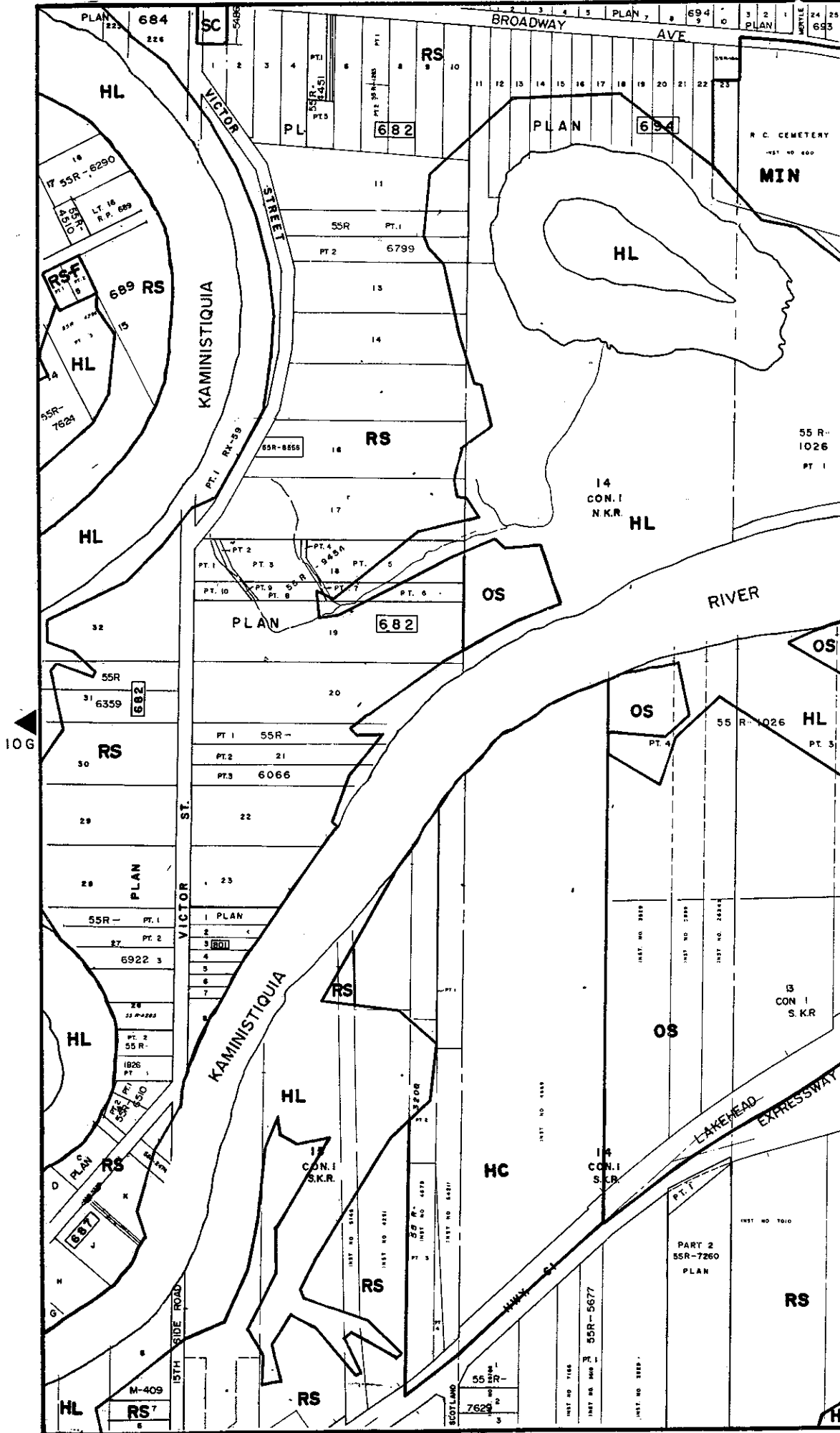


MAP 10H

LEGEND

THE FOLLOWING IS FOR INFORMATION ONLY AND DOES NOT FORM PART OF THE BY-LAW
 ORIGINALLY ENACTED BY BY-LAW 177-1983
 PASSED JULY 26, 1983
 AMENDED BY BY-LAW 50-1986
 PASSED MARCH 11, 1986
 EFFECTIVE DATE MARCH 16 1987
 REVISION DATES:

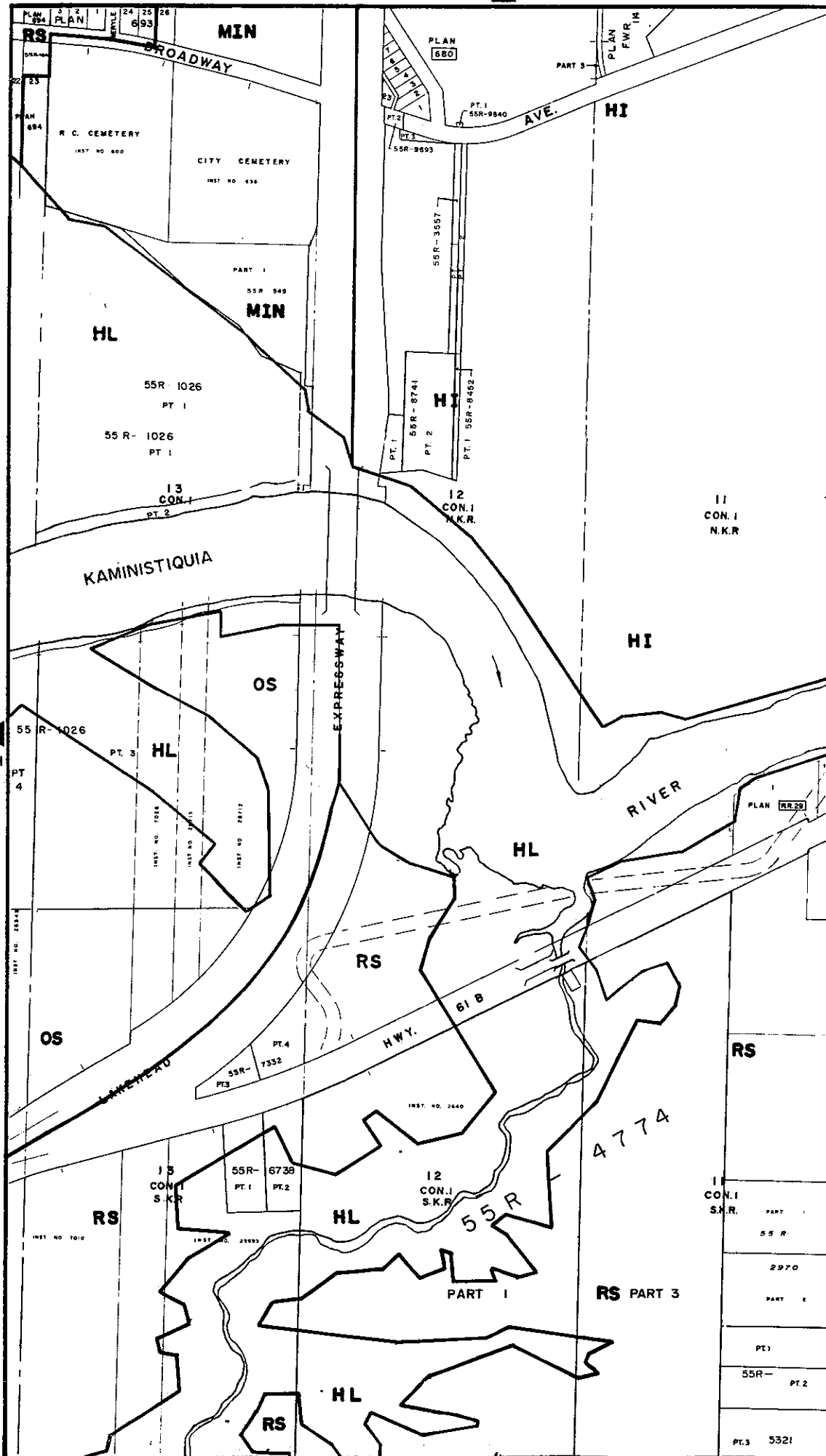
DECEMBER 1991



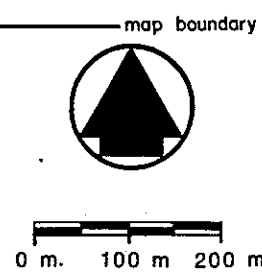
MAP 10 I

LEGEND

THE FOLLOWING IS FOR INFORMATION ONLY AND DOES NOT FORM PART OF THE BY-LAW.
 ORIGINALLY ENACTED BY BY-LAW 177-1983
 PASSED JULY 26, 1983
 AMENDED BY BY-LAW 50-1986
 PASSED MARCH 11, 1986
 EFFECTIVE DATE MARCH 16 1987.
 REVISION DATES -
 DECEMBER 1991



RS	11 CON. J S.K.R.
HL	PART 1
55R	55R
2970	PART 2
PT. 1	
55R-	PT. 2
PT. 3	5521

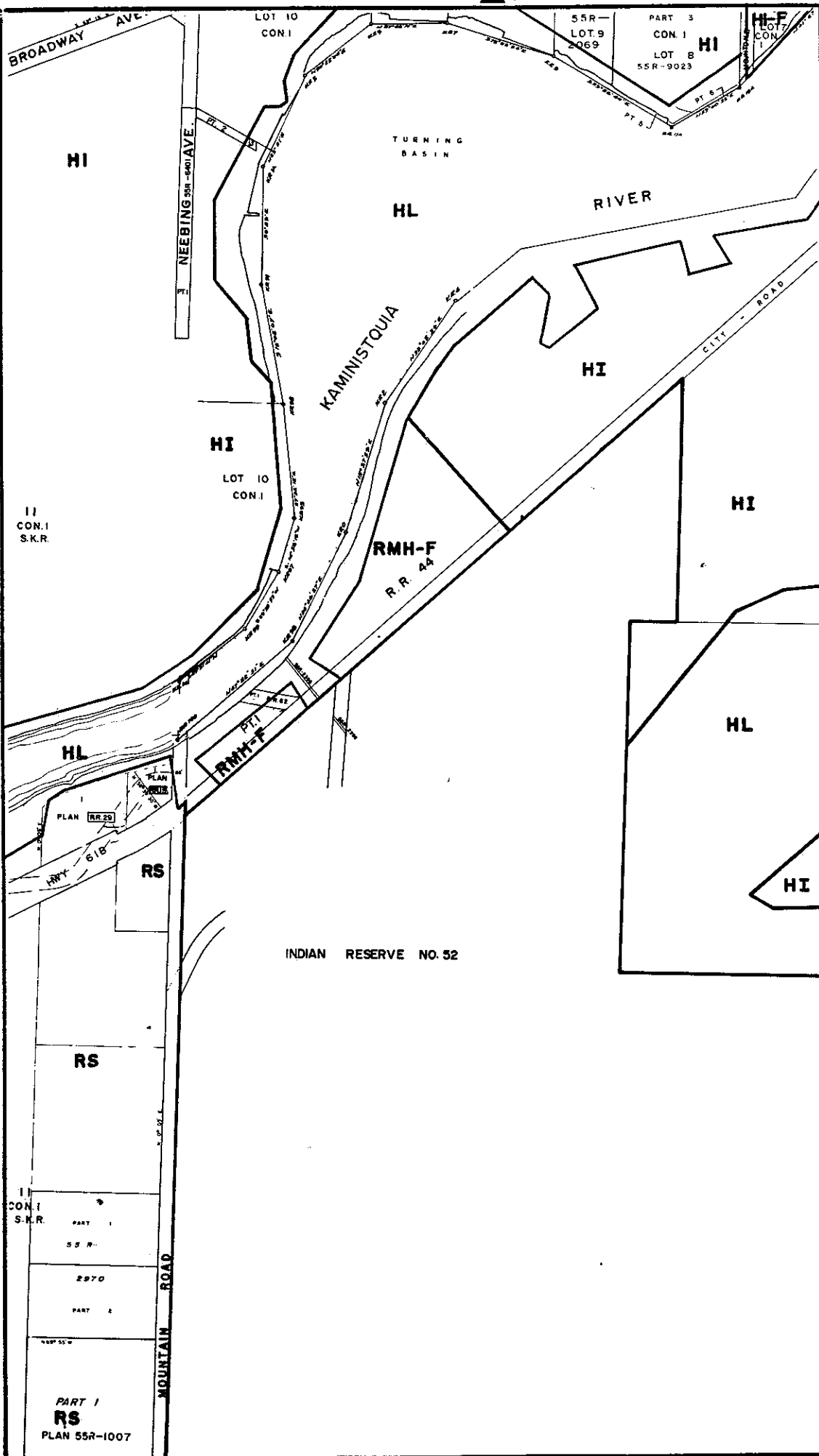


MAP 10J

LEGEND

THE FOLLOWING IS FOR INFORMATION ONLY AND DOES NOT FORM PART OF THE BY-LAW.

ORIGINALLY ENACTED BY BY-LAW 177-1983
PASSED JULY 26, 1983
AMENDED BY BY-LAW 50-1986
PASSED MARCH 11, 1986
EFFECTIVE DATE MARCH 16 1987
REVISION DATES -
AUGUST 1992



10 I

10 K

11 CON.1 S.K.R.

PLAN RR 20

PLAN RR 20

HWY 618

RS

INDIAN RESERVE NO. 52

RS

11 CON.1 S.K.R.

PART 1

55 R-

2070

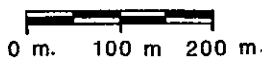
PART 2

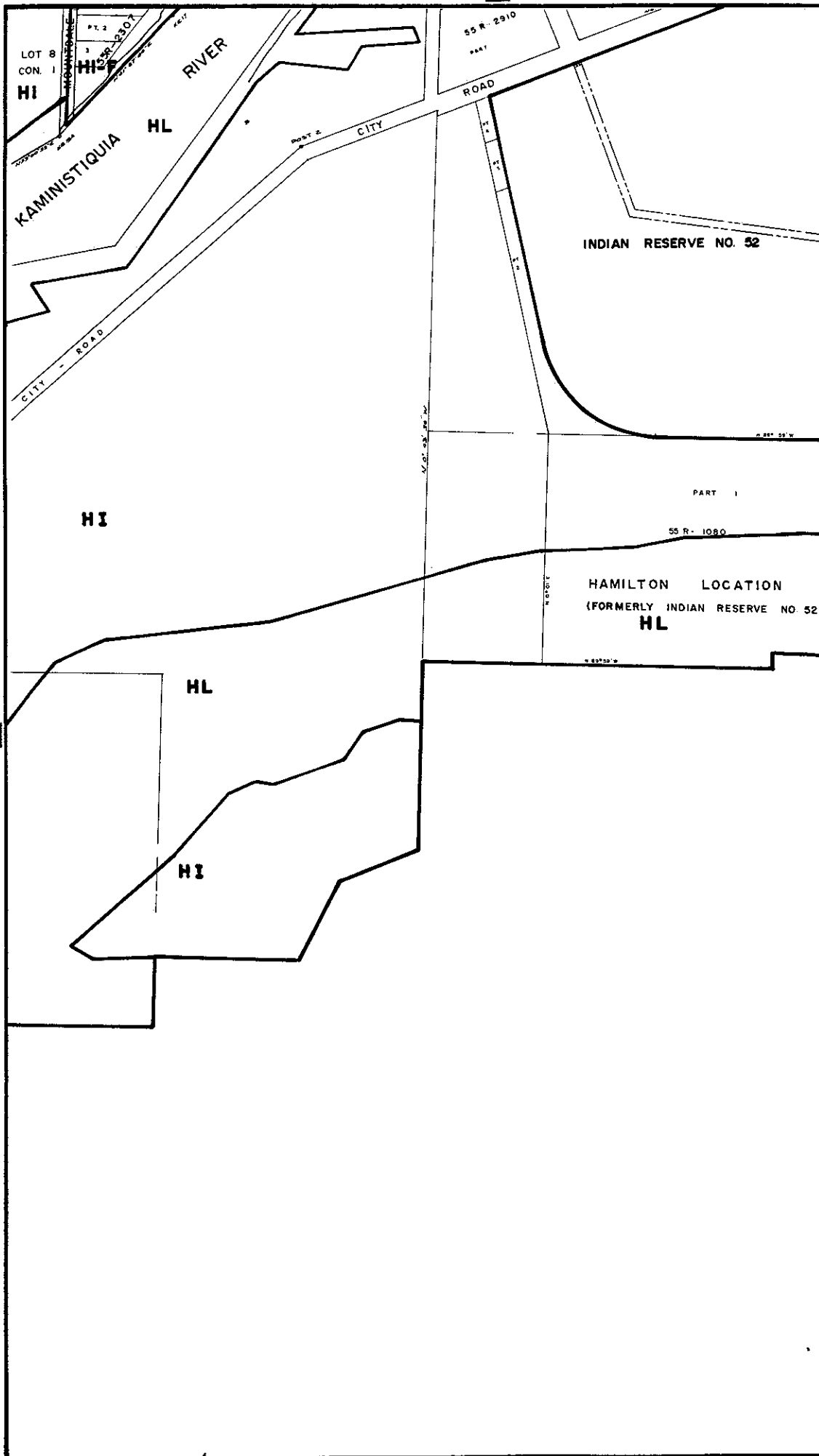
PART 1

RS

PLAN 55R-1007

map boundary

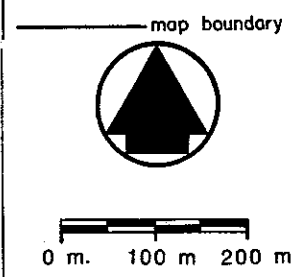




MAP 10K

LEGEND

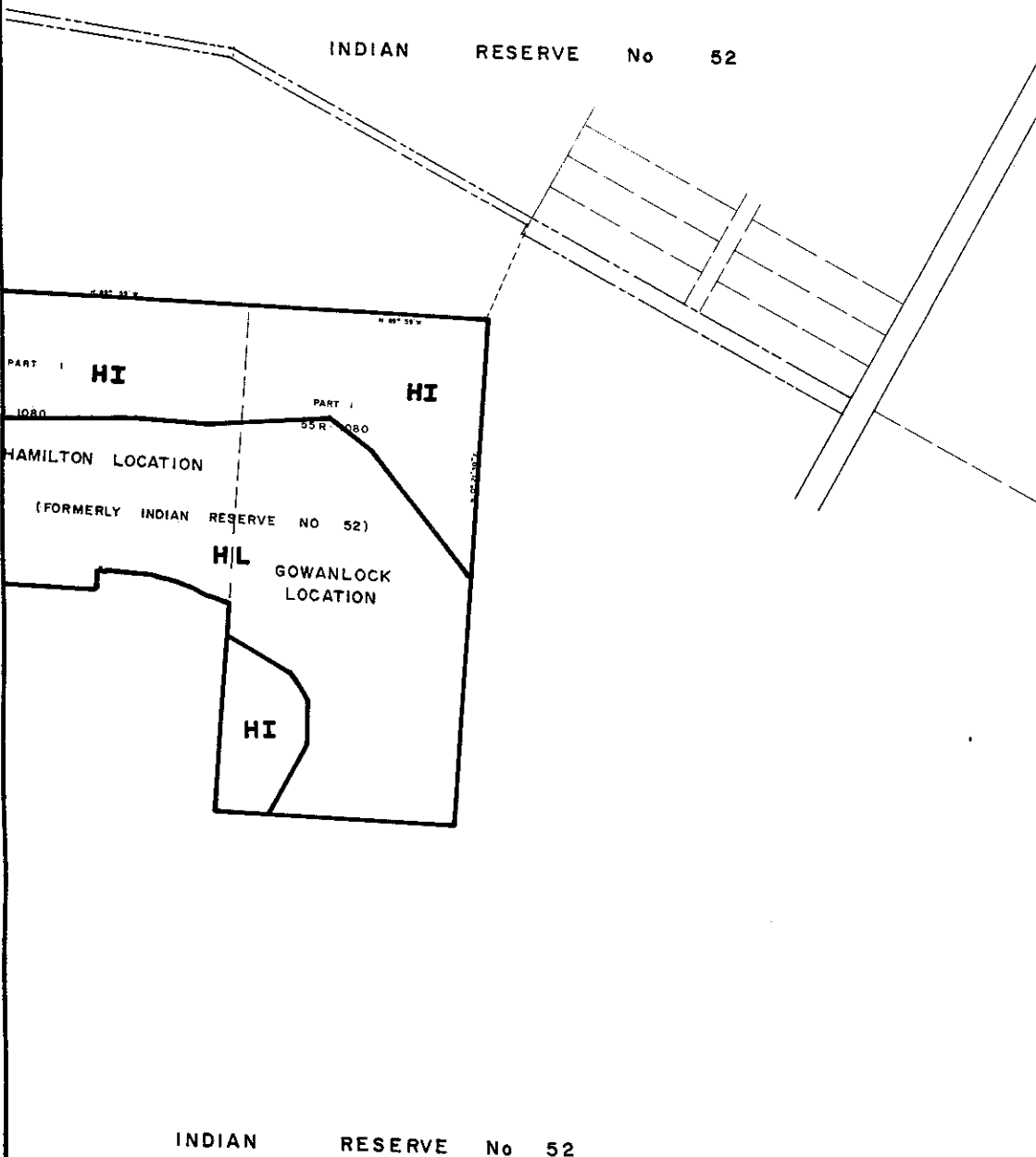
THE FOLLOWING IS FOR INFORMATION ONLY AND DOES NOT FORM PART OF THE BY-LAW. ORIGINALLY ENACTED BY BY-LAW 177-1983 PASSED JULY 26, 1983 AMENDED BY BY-LAW 50-1986 PASSED MARCH 11, 1986 EFFECTIVE DATE MARCH 16 1987 REVISION DATES.



MAP 10L

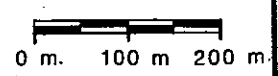
LEGEND

THE FOLLOWING IS FOR INFORMATION ONLY AND DOES NOT FORM PART OF THE BY-LAW. ORIGINALLY ENACTED BY BY-LAW 177-1983 PASSED JULY 26, 1983 EFFECTIVE DATE MARCH 16, 1987 REVISION DATES:



BY-LAW 177-1983
 PASSED THIS 26th DAY OF
JULY 19 83

————— map boundary

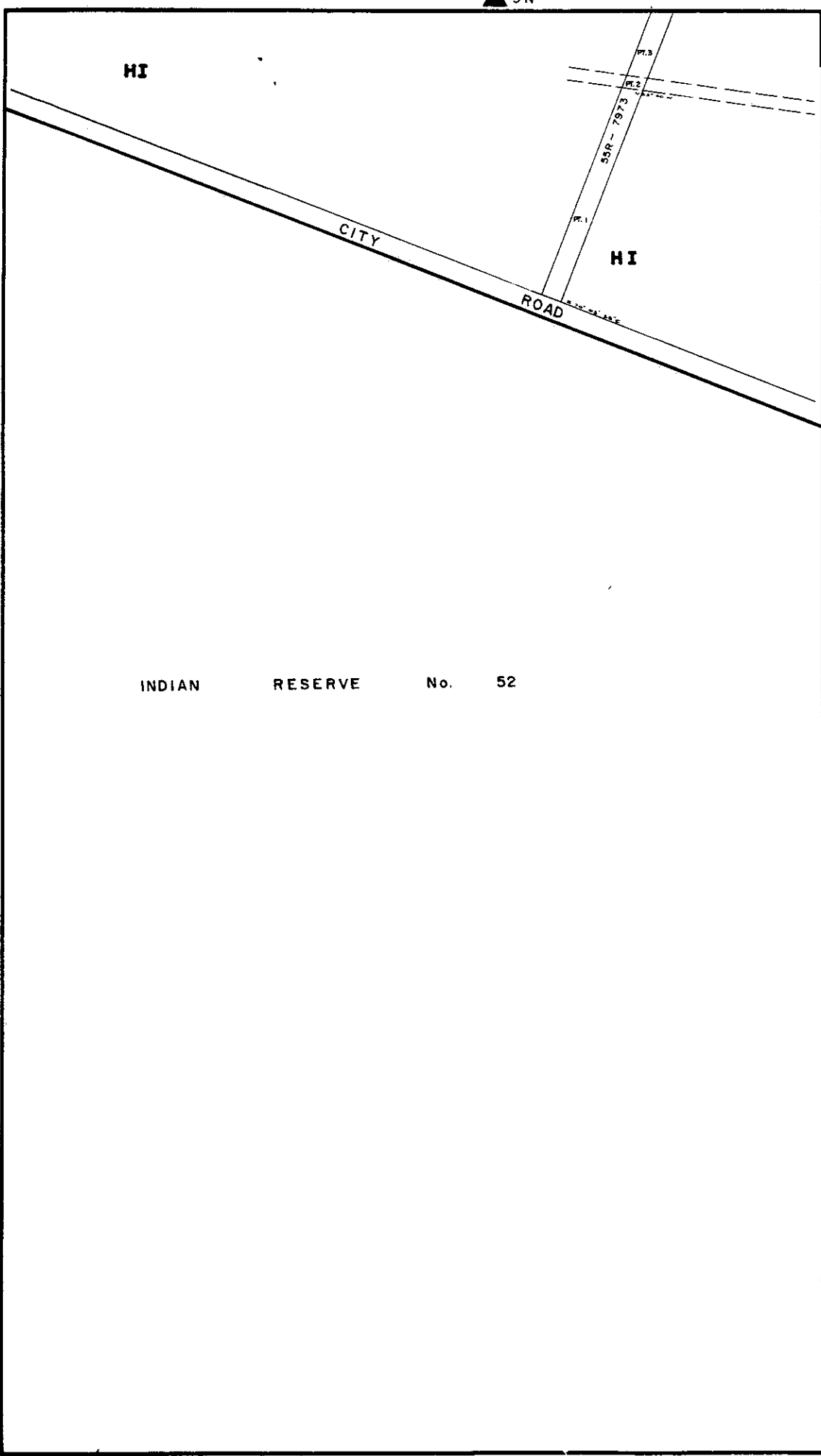


▲ 9 N

MAP 10N

LEGEND

THE FOLLOWING IS FOR INFORMATION ONLY AND DOES NOT FORM PART OF THE BY-LAW ORIGINALLY ENACTED BY BY-LAW 177-1983, PASSED JULY 26, 1983, EFFECTIVE DATE MARCH 16, 1987 REVISION DATES:
AUGUST 1992



HI

CITY

ROAD

HI

SSR-7973

Pt. 3

Pt. 2

Pt. 1

INDIAN RESERVE No. 52

▲
10 0

BY-LAW 177 - 1983
PASSED THIS 26th DAY OF
JULY 19 83

— map boundary



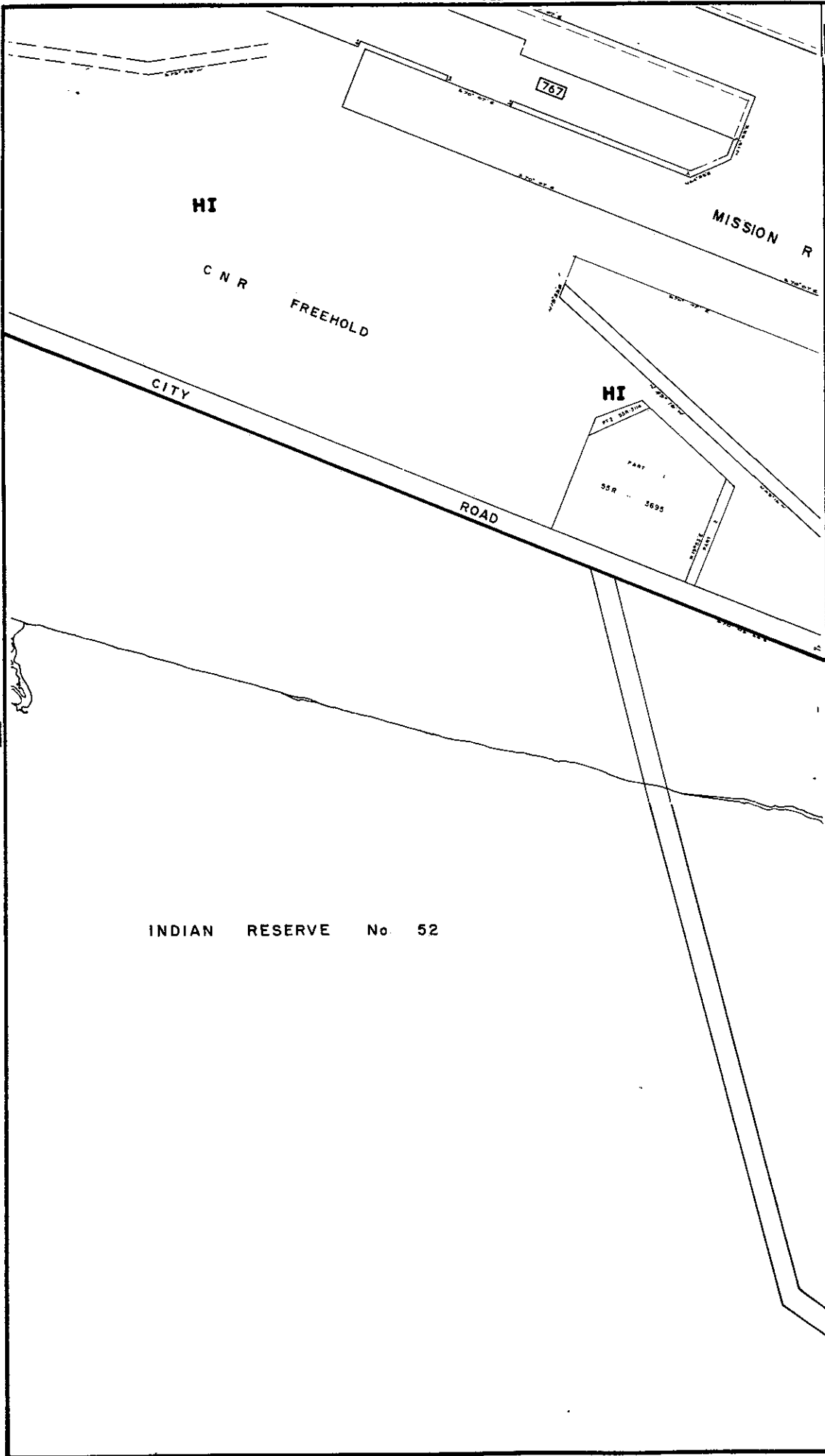
0 m. 100 m 200 m

90

MAP 10 O

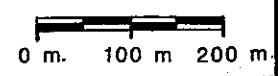
LEGEND

THE FOLLOWING IS FOR INFORMATION ONLY AND DOES NOT FORM PART OF THE BY-LAW ORIGINALLY ENACTED BY BY-LAW 177-1983 PASSED JULY 26, 1983 EFFECTIVE DATE MARCH 16, 1987 REVISION DATES-



BY-LAW 177 - 1983
 PASSED THIS 26th DAY OF
 JULY 1983

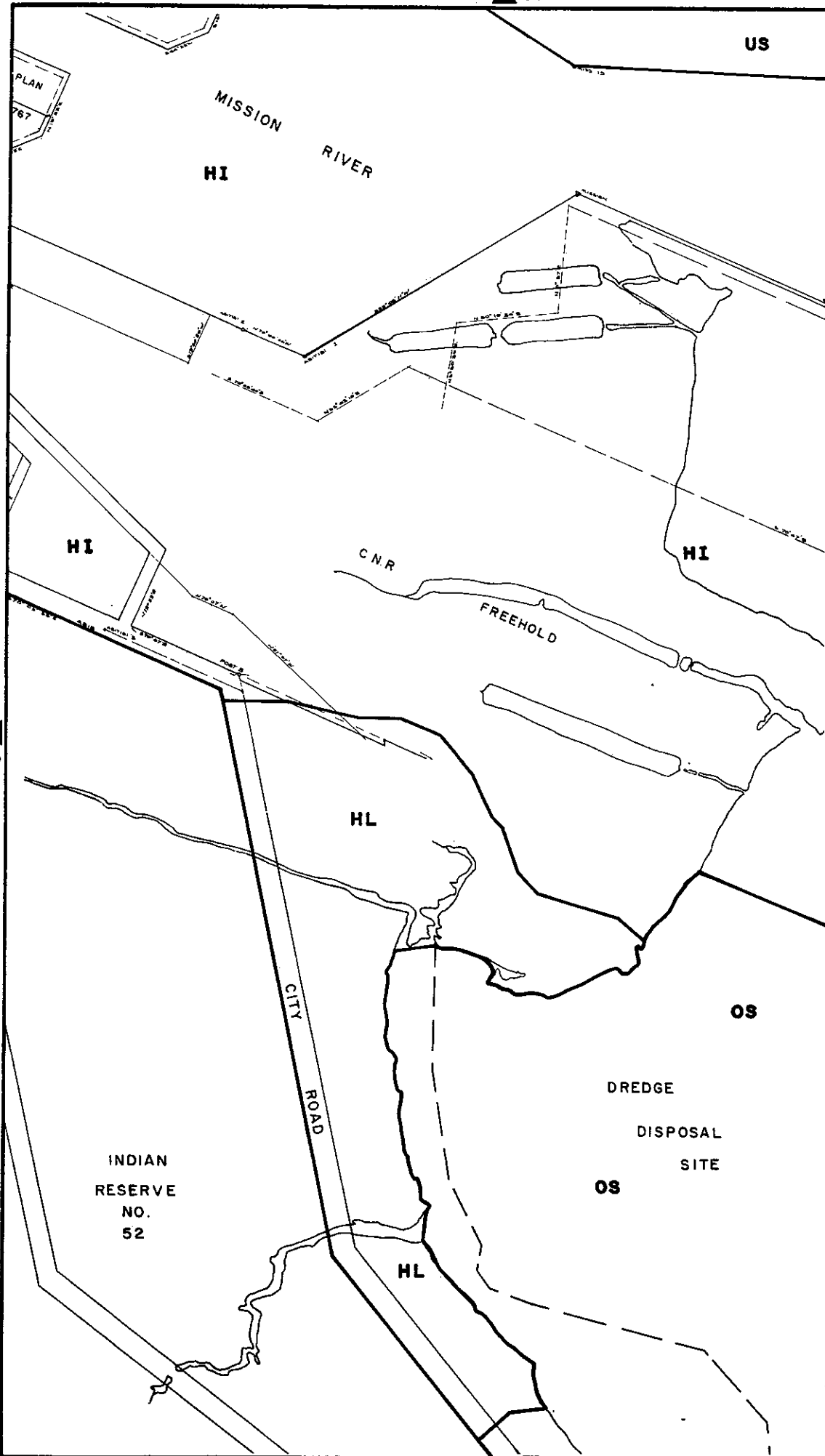
— map boundary



MAP 10P

LEGEND

THE FOLLOWING IS FOR INFORMATION ONLY AND DOES NOT FORM PART OF THE BY-LAW. ORIGINALLY ENACTED BY BY-LAW 177-1983 PASSED JULY 26, 1983 EFFECTIVE DATE MARCH 16, 1987 REVISION DATES:

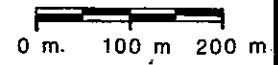


10 0

10 0

BY-LAW 177-1983
 PASSED THIS 26th DAY OF
 JULY 1983

map boundary

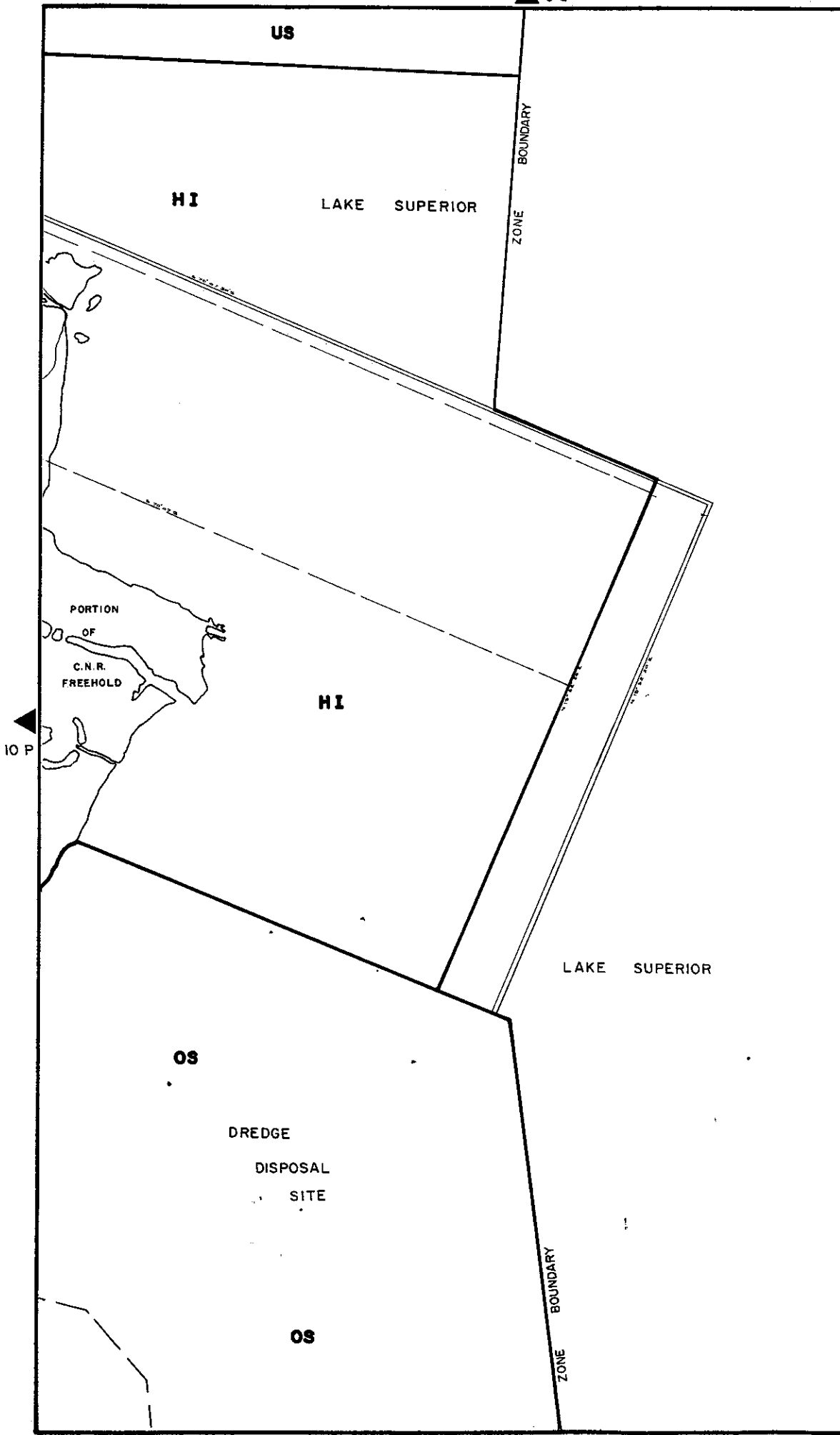


90

MAP 10Q

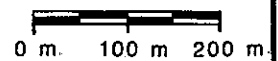
LEGEND

THE FOLLOWING IS FOR INFORMATION ONLY AND DOES NOT FORM PART OF THE BY-LAW ORIGINALLY ENACTED BY BY-LAW 177-1983 PASSED JULY 26, 1983 EFFECTIVE DATE MARCH 16, 1987 REVISION DATES:



BY-LAW 177-1983
 PASSED THIS 26th DAY OF
JULY 1983

— map boundary



110