

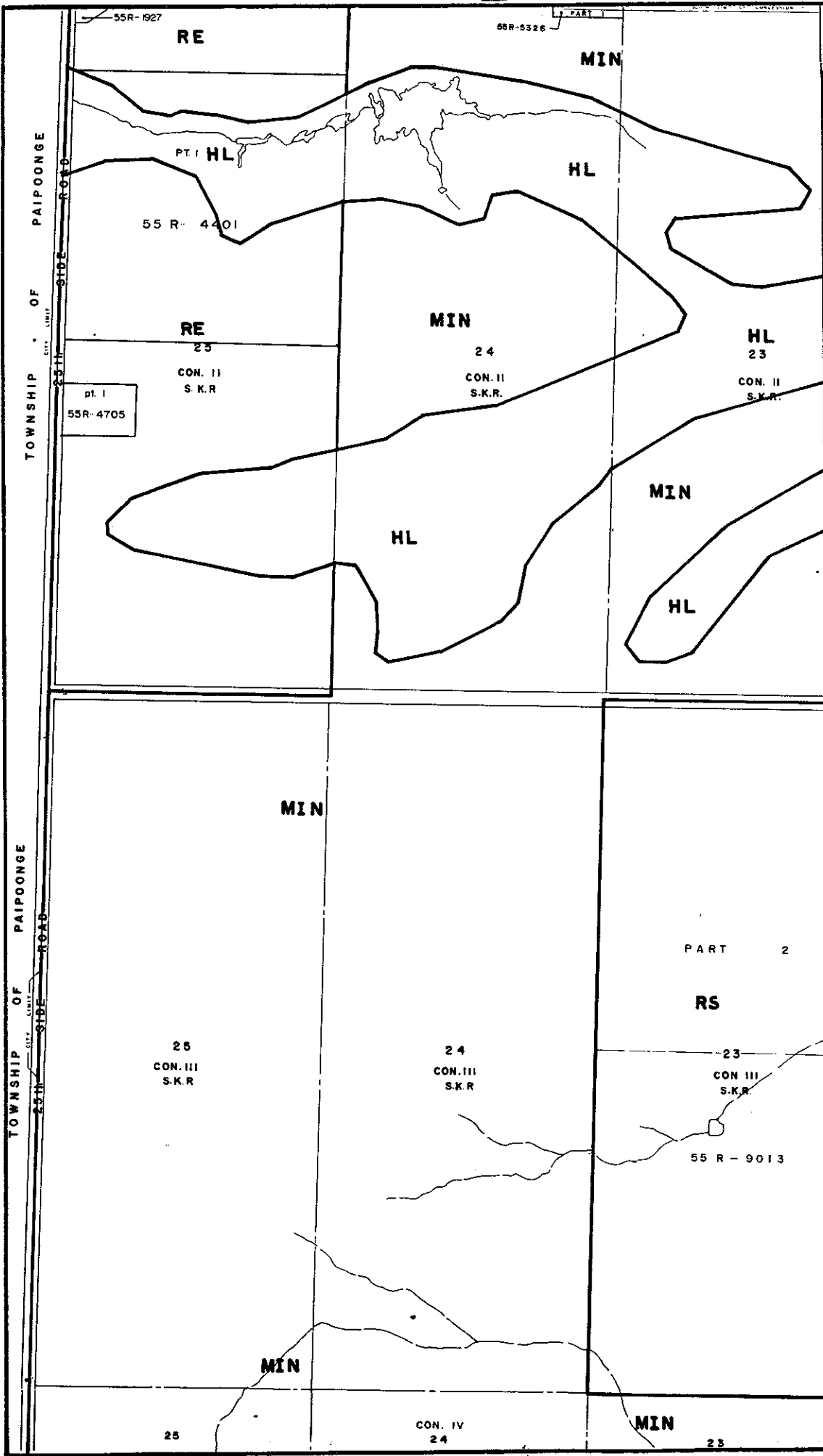
MAP 11D

LEGEND

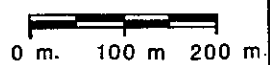
THE FOLLOWING IS FOR INFORMATION ONLY AND DOES NOT FORM PART OF THE BY-LAW.

ORIGINALLY ENACTED BY BY-LAW 177-1983
 PASSED JULY 26, 1983
 EFFECTIVE DATE MARCH 16, 1987

REVISION DATES:
 AUGUST 1991
 DECEMBER 1991



BY-LAW 177 - 1983
 PASSED THIS 26th DAY OF
 JULY 1983

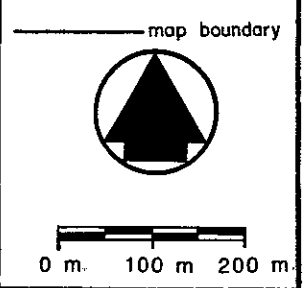
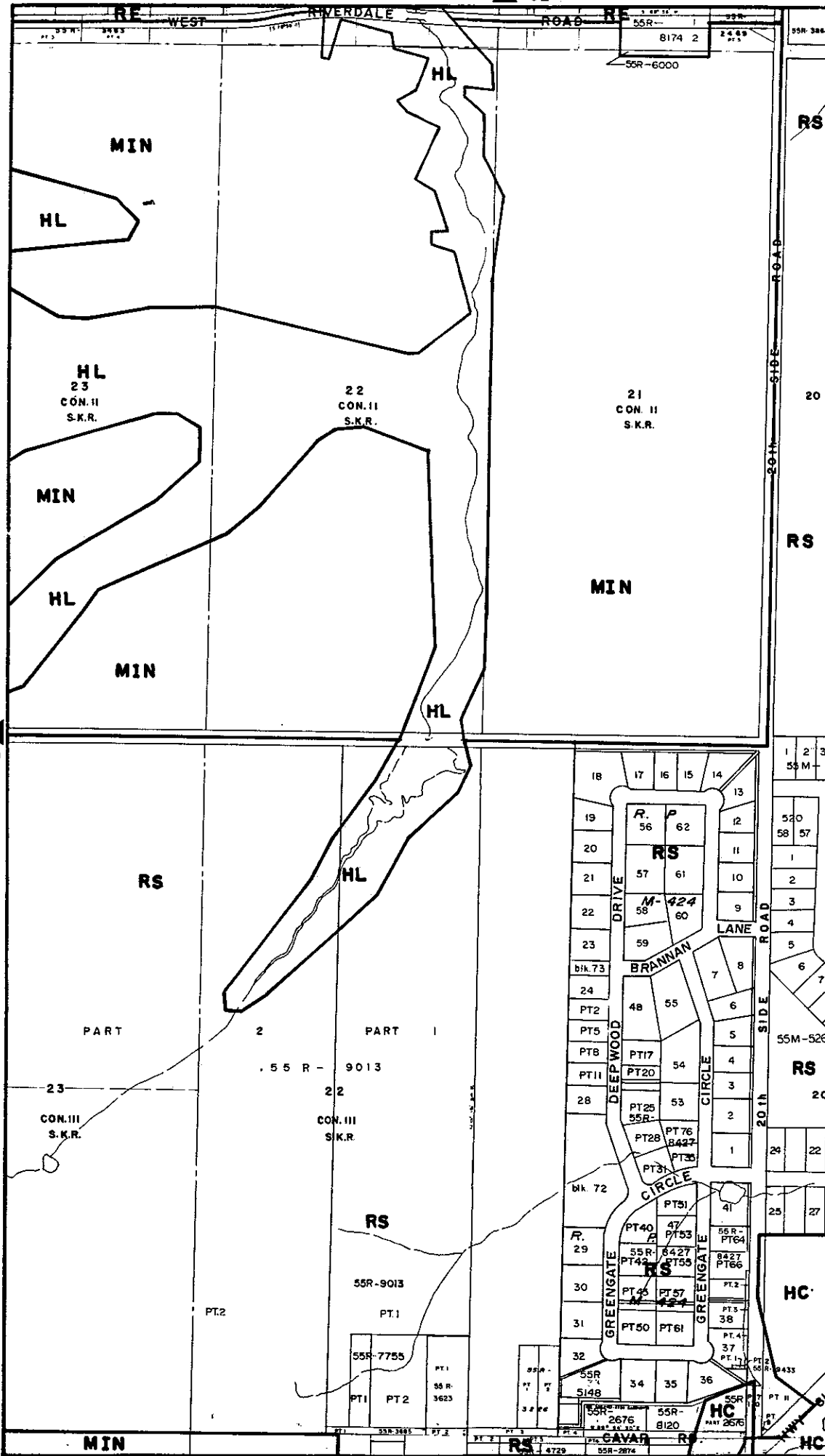


MAP 11E

LEGEND

THE FOLLOWING IS FOR INFORMATION ONLY AND DOES NOT FORM PART OF THE BY-LAW.

ORIGINALLY ENACTED BY BY-LAW 177-1983
PASSED JULY 26, 1983
AMENDED BY BY-LAW 50-1986
PASSED MARCH 11, 1986
EFFECTIVE DATE MARCH 16 1987
REVISION DATES:
AUGUST 1990
AUGUST 1991
DECEMBER 1991
AUGUST 1993

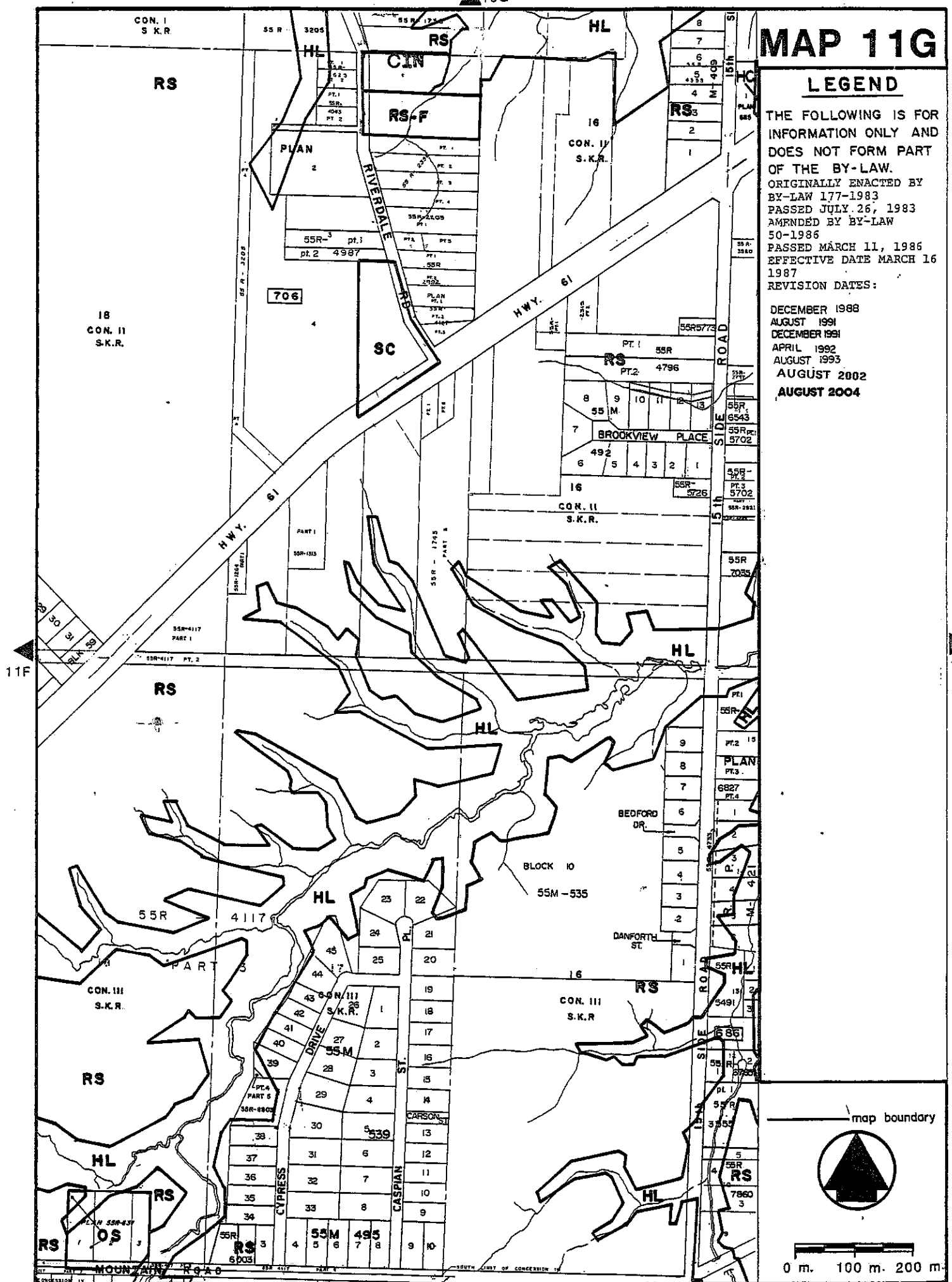


MAP 11G

LEGEND

THE FOLLOWING IS FOR INFORMATION ONLY AND DOES NOT FORM PART OF THE BY-LAW. ORIGINALLY ENACTED BY BY-LAW 177-1983 PASSED JULY 26, 1983 AMENDED BY BY-LAW 50-1986 PASSED MARCH 11, 1986 EFFECTIVE DATE MARCH 16 1987 REVISION DATES:

- DECEMBER 1988
- AUGUST 1991
- DECEMBER 1991
- APRIL 1992
- AUGUST 1993
- AUGUST 2002
- AUGUST 2004



MAP 11H

LEGEND

THE FOLLOWING IS FOR INFORMATION ONLY AND DOES NOT FORM PART OF THE BY-LAW.

ORIGINALLY ENACTED BY BY-LAW 177-1983 PASSED JULY 26, 1983 AMENDED BY BY-LAW 50-1986 PASSED MARCH 11, 1986 EFFECTIVE DATE MARCH 16 1987

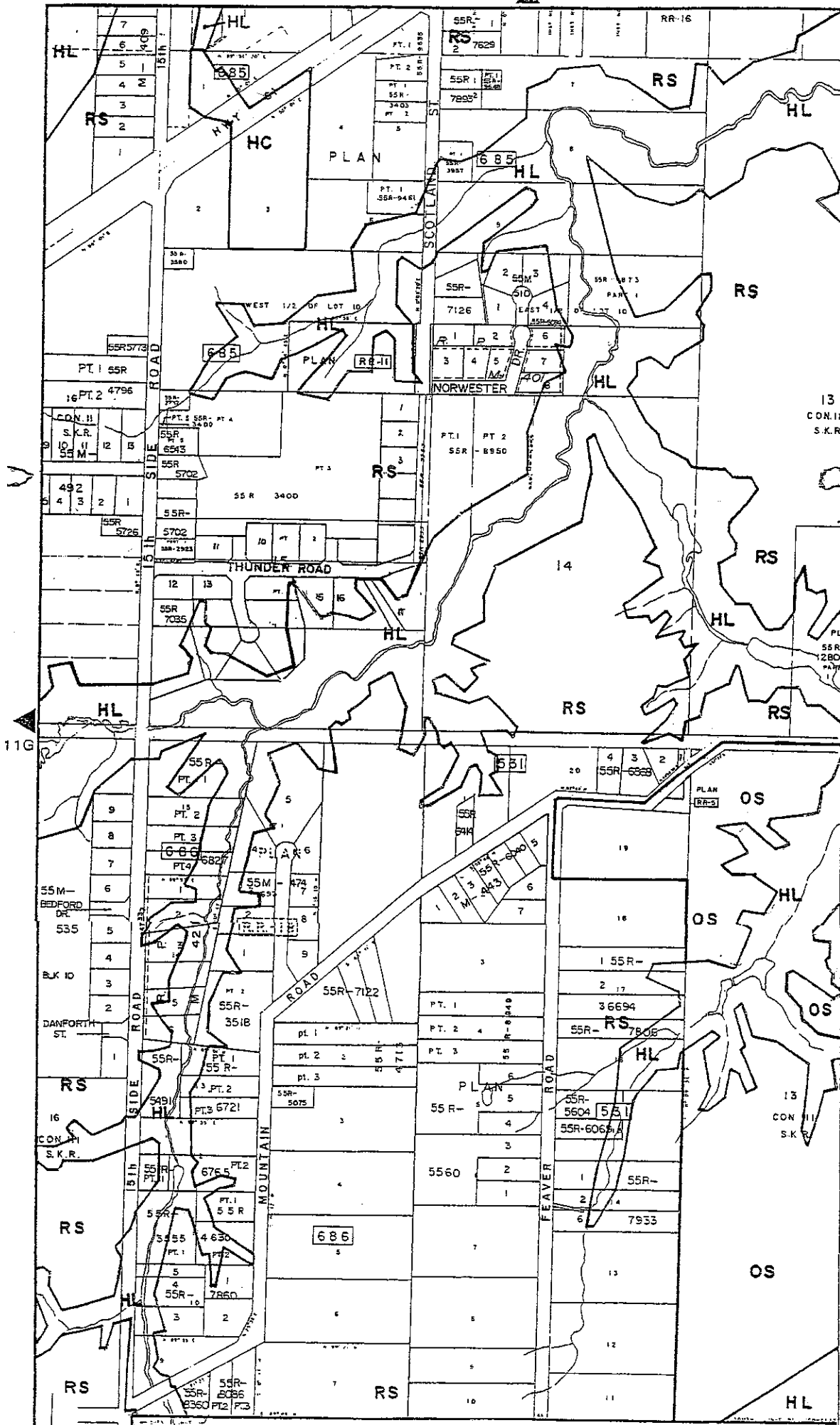
REVISION DATES:

DECEMBER 1991

AUGUST 2000

AUGUST 2002

APRIL 2005



map boundary



0 m 100 m 200 m

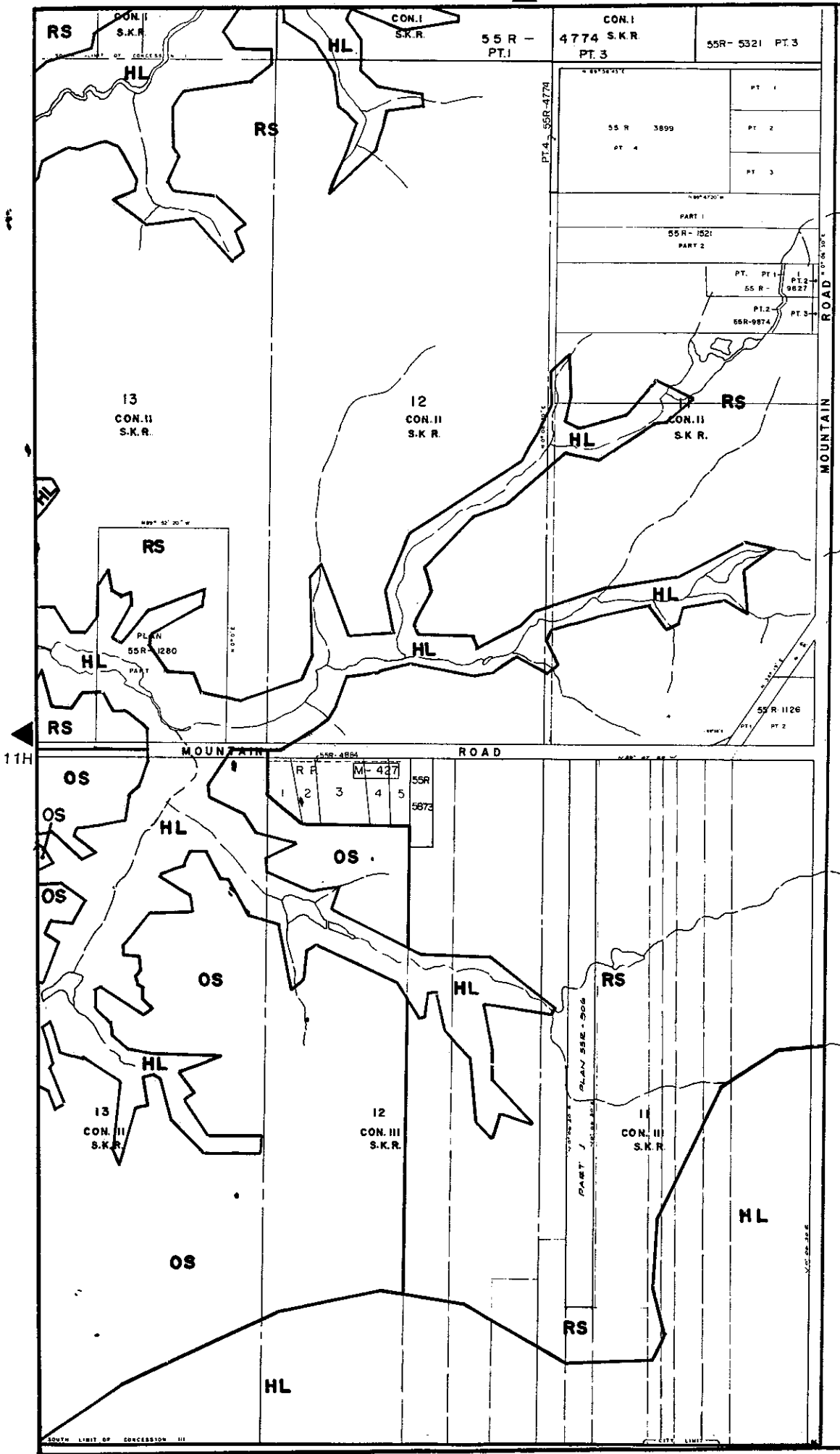
MAP 11 I

LEGEND

THE FOLLOWING IS FOR INFORMATION ONLY AND DOES NOT FORM PART OF THE BY-LAW.

ORIGINALLY ENACTED BY BY-LAW 177-1983
 PASSED JULY 26, 1983
 AMENDED BY BY-LAW 50-1986
 PASSED MARCH 11, 1986
 EFFECTIVE DATE MARCH 16 1987

REVISION DATES:
 AUGUST 1991
 DECEMBER 1991



INDIAN RESERVE NO. 52

map boundary



0 m. 100 m 200 m

▲ 10P

FWR 6

HL

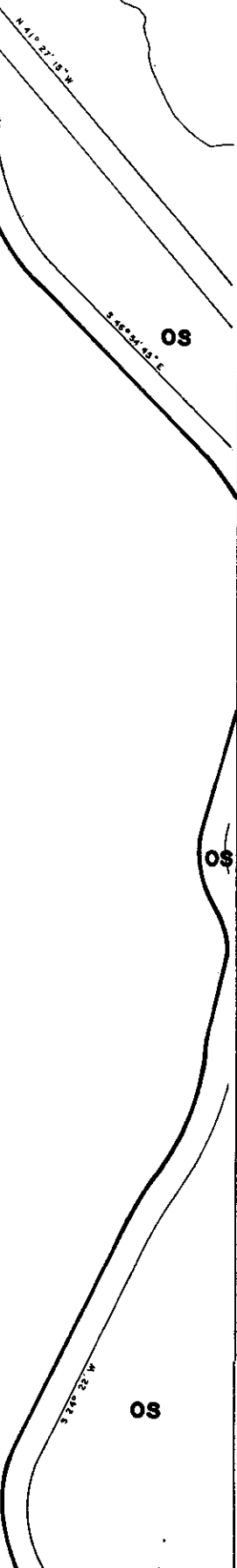
LAKE SUPERIOR
OS

MAP 11 P

LEGEND

THE FOLLOWING IS FOR INFORMATION ONLY AND DOES NOT FORM PART OF THE BY-LAW ORIGINALLY ENACTED BY BY-LAW 177-1983 PASSED JULY 26, 1983 EFFECTIVE DATE MARCH 16, 1987 REVISION DATES:

INDIAN RESERVATION 52



▶ 11Q

BY-LAW 177-1983
 PASSED THIS 26th DAY OF
JULY 1983

— map boundary



0 m. 100 m 200 m

▼ 10P

