



BUILD THUNDER BAY

YOUR ONE STOP
DEVELOPMENT SHOP



Solid Waste & Recycling Services – Waste Management Requirements

Mandatory Requirements – Customer Service Notice

Developers proposing 6 or more residential units must have an on-site visit from Solid Waste and Recycling Services (SWRS). This visit will ensure the waste storage enclosure, and its location meet requirements prior to the start of construction. Any building with six or more residential units will be required to have an approved waste storage enclosure(s) to receive municipal waste collection services.

To arrange the visit or if you have any questions, please contact the Supervisor of Solid Waste Collection at **807-474-4807** or heather.marx@thunderbay.ca.

Recycling Program

As per provincial regulation O. Reg. 103/94, the owner of a building that contains six or more dwelling units shall implement a source separation recycling program for the waste generated at the building.

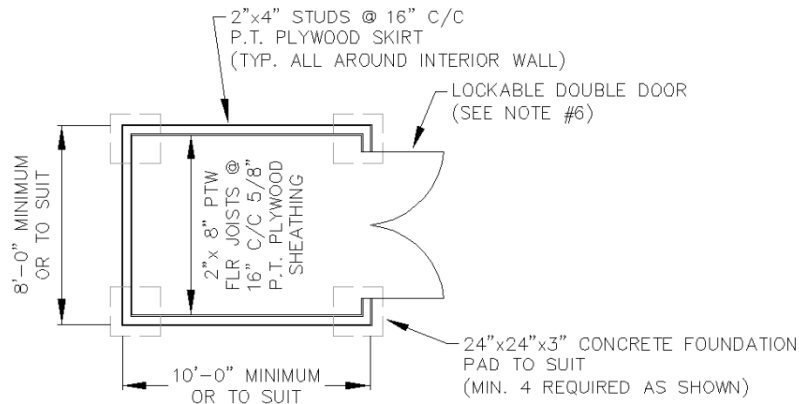
In order to be eligible for free recycling service through the provincially-mandated, producer-operated program, it is requirement that the developer contact the local GFL Environmental office at 807-577-0411 or thunderbayrecycling@gflenv.com before construction begins, to review the site plan and ensure the designated space for recycling services will be sufficient.

Once occupancy is established and the building begins to receive garbage collection services, the City will notify GFL Environmental that recycling service is ready to begin on the owner's behalf.

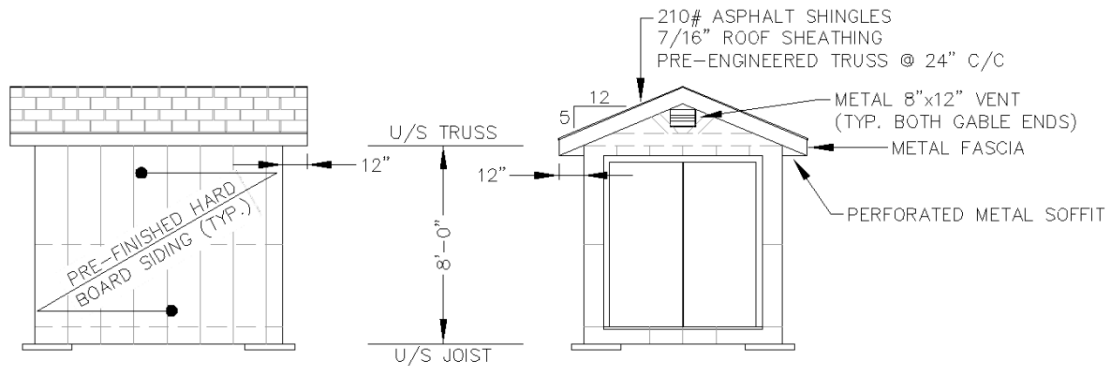
111 Syndicate Ave. S, PO Box 800
Thunder Bay, ON, P7E 6S4
807-62-BUILD
buildthunderbay.ca



Minimum Requirement for a Waste Storage Enclosure



PLAN
N.T.S.



ELEVATION
N.T.S.

ELEVATION
N.T.S.

GENERAL NOTES

1. ALL MATERIALS TO BE CONSTRUCTION GRADE OR BETTER.
2. ANY WASTE STORAGE FACILITY OVER 100 SQ. FT. REQUIRES A BUILDING PERMIT AT OWNERS EXPENSE.
3. ALL CONSTRUCTION TO SATISFY ALL REQUIREMENTS OF THE ONTARIO BUILDING CODE.
4. ALL WASTE STORAGE FACILITIES TO BE PLACED ON LEVEL STABLE GRADE.
5. CONCRETE BLOCK CONSTRUCTION ON A CONCRETE SLAB IS PREFERRED FOR DURABILITY AND EASE OF CLEANING.
6. LOCKABLE DOUBLE DOOR WITH A MINIMUM COMBINED WIDTH OF 5'-11" AND A MINIMUM HEIGHT OF 6'-8". ALL DOORS CAPABLE OF BEING OPENED FLUSH TO THE STRUCTURE AND WITH MEANS TO BE SECURED IN THE FULL OPEN POSITION TO PREVENT ACCIDENTAL CLOSURE.
7. INTERNAL LIGHT SUFFICIENT TO ILLUMINATE THE ENTIRE INTERIOR OF THE STRUCTURE AND EXTERNAL SECURITY LIGHT IF DEEMED NECESSARY.
8. SIGN ON THE EXTERIOR STATING CLEARLY "WASTE STORAGE ONLY" OR "RECYCLABLES" AS THE CASE MAY BE.

ALL DIMENSIONS AND ELEVATIONS ARE IN UNITS OF METRES UNLESS OTHERWISE NOTED.

CITY OF Thunder Bay <i>Respect for Nature</i>		ENGINEERING DIVISION	
TITLE TYPICAL WASTE STORAGE FACILITY			
DRAWN BY S.S.	DATE NOV 2020	SCALE N.T.S.	SIZE A

Needles Policy

To protect the health and safety of our waste collection staff, the City of Thunder Bay has a zero-tolerance policy for placing sharps or needles in the garbage.

Improper disposal of these items can result in serious injuries. That's why we have a three-step progressive policy in place. If sharps or needles are found in your garbage, you may receive a warning, followed by a temporary suspension of collection service, and potentially a permanent loss of municipal garbage collection.

For assistance with proper disposal, contact **Superior Points:**

(807) 621-7861

Toll-Free: 1-888-294-6630

Rodent Control Policy

To ensure safety, enclosed structure containing waste must be free of rodents and wildlife and reasonable steps must be taken to ensure there are no rodents/wildlife in the garbage shed.

If these conditions aren't met, waste collection may be temporarily suspended until the issue is resolved.

Further Information

For detailed information about waste storage enclosures please reference the "Quick Guide to Waste Management Requirements for a Storage Enclosure".

