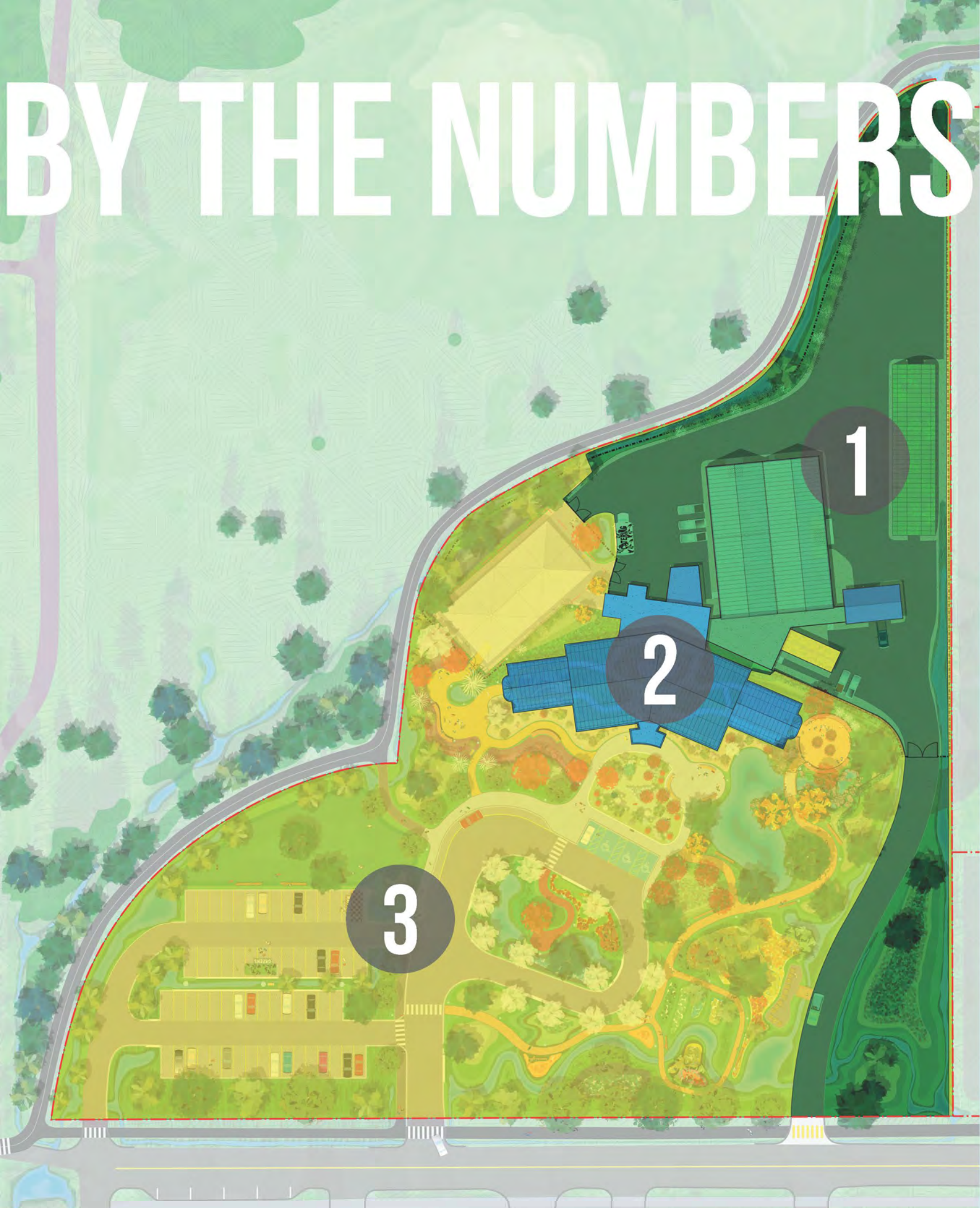


# BY THE NUMBERS



**1967**

IN OPERATION SINCE  
BOTANICAL GARDENS AND PARK

**2.5Ha**

**INCREASE 8,500 TO 10,250 FT<sup>2</sup>**  
*Production Greenhouse Facilities*

- **3** Zone Environmentally Controlled High Performance 5-Wall Polycarbonate Greenhouse
- **1** New Headhouse/Workshop
- **1** New Studio/Gallery with **2** new Accessible Washrooms
- **1** Expand Cold-frame 1,290 ft<sup>2</sup> to 2,880 ft<sup>2</sup>

**2020-2023**

**PHASE 1**

**2022-2025**

**PHASE 2**

- **ALL** Glazing and HVAC Systems replaced
- **1** Multi-Purpose Event Space
- Re-Design all **12** Tropical, Arid and Succulent Display Areas
- Increase Public WCs from **2** to **4**
- Upgrade walkways and washrooms to ensure accessibility

**OUTDOOR VENUE AND EVENTS PROJECT**

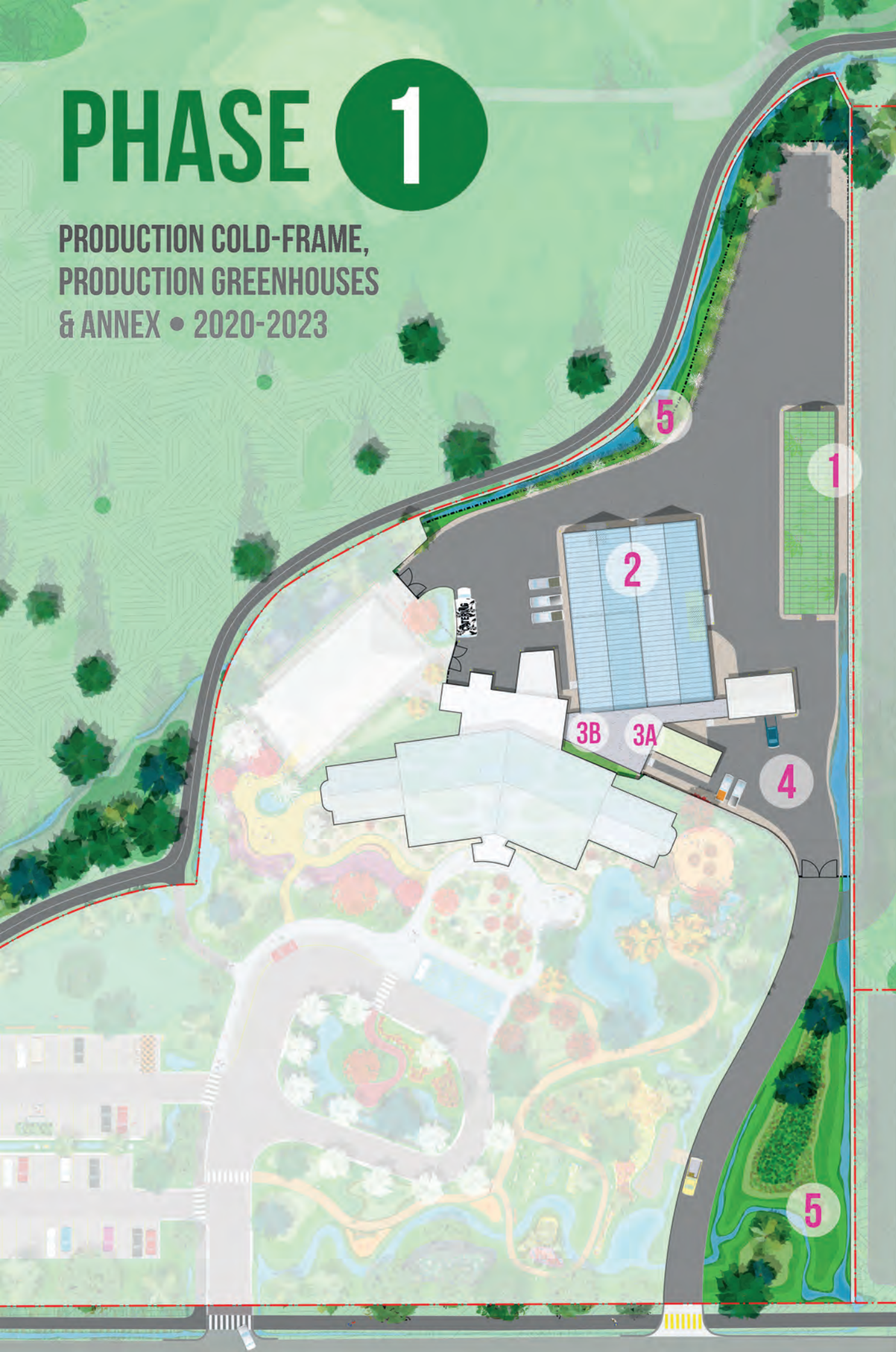
**3**

- Creation of **8** Outdoor Event and Venue Spaces
- **ZERO** Runoff Storm-water Site Design
- Expand Outdoor Garden Displays to **12** Community, Feature Gardens, and Outdoor Classrooms
- **400m** of new Accessible Pathways and Trails

**2023-2026**

# PHASE 1

PRODUCTION COLD-FRAME,  
PRODUCTION GREENHOUSES  
& ANNEX • 2020-2023



**1** REPLACEMENT OF 1,290 FT<sup>2</sup> COLD-FRAME GREENHOUSE WITH A LARGER 4 SEASON COLD-FRAME GREENHOUSE



**2** REPLACEMENT OF PRODUCTION GREENHOUSES WITH NEW 8,450 FT<sup>2</sup>, HIGH PERFORMANCE POLYCARBONATE GREENHOUSE



**3** NEW ANNEX FACILITY INCLUDES PRODUCTION WORKSHOP **A** AND PUBLIC GALLERY/STUDIO **B** WITH ACCESSIBLE WASHROOMS



**4** NEW SERVICE ROAD - PROVIDES SAFE AND SEPARATED ACCESS FOR OPERATIONS

**5** LANDSCAPE REMEDIATION - INTEGRATED BERMING AND BIO-SWALES FOR ZERO-RUNOFF

# INNOVATING GROWTH FOR THE FUTURE

## REBUILDING OUR GROWING AND PRODUCTION FACILITY



# PHASE 2

CENTENNIAL BOTANICAL CONSERVATORY RENEWAL  
& EXPANDED SERVICE OPPORTUNITY • 2022-2025



- 1 REPLACEMENT OF ALL GLASS EXTERIOR WITH HIGH PERFORMANCE ACRYLITE GLAZING
- 2 INSTALL HIGH-EFFICIENCY BOILERS AND IMPROVEMENTS TO BOH/STAFF AREAS
- 3 REPLACEMENT OF WEST WING AND REDESIGN CACTI AND SUCCULENT DISPLAYS
- 4 REPLACEMENT OF EAST WING AND CREATION OF NEW MULTI-PURPOSE VENUE
- 5 RECONSTRUCTION OF ALL WALKWAYS TO ENSURE ACCESSIBILITY THROUGHOUT THE FACILITY, AND ADDITION OF 2 NEW WASHROOMS
- 6 RECONSTRUCTION OF THE POND AND WATERFALL WITH THE ADDITION OF AN ACCESSIBLE WATER EDGE
- 7 RENOVATION OF THE ARRIVAL LOBBY TO INCLUDE AN INTEGRATED DONOR WALL



# 3

# OUTDOOR VENUE AND EVENTS SPACE PROJECT



*The Outdoor Venue & Events Space Project will provide multiple opportunities for vendor and marketplace activities that could not be achieved as part of the facility renewal alone.*

*This expanded offering combines community gardens, public spaces, and horticulture experiences throughout the site for increased levels of educational programming, activities, and tours in these 5 Key Areas:*

**1 WEST GARDEN & TERRACES**

**2 EAST GARDEN & TERRACES**

**3 GREAT LAWN & MARKET SQUARE**

**4 AQUATIC GARDENS & POND**

**5 ARRIVAL GARDENS & PLAZA**