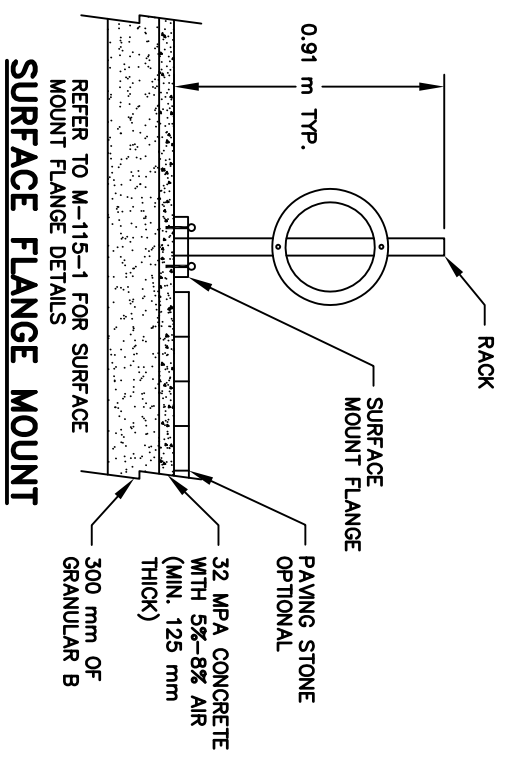


IN-GROUND MOUNT

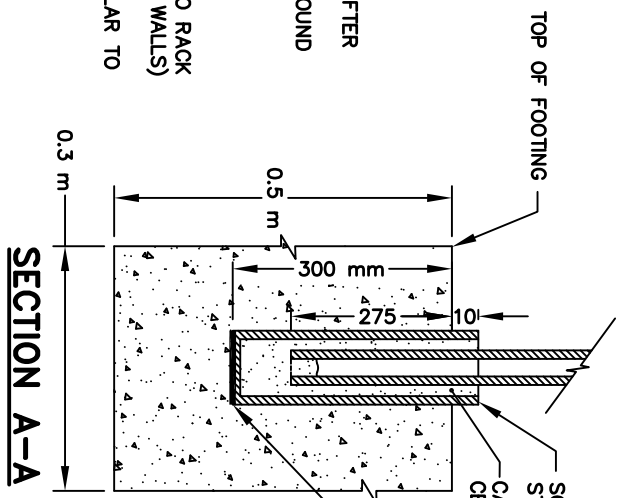


SURFACE FLANGE MOUNT

- NOTES:**
- 1) ANCHORS SHALL BE INSTALLED ACCORDING TO MANUFACTURER'S SPECIFICATIONS
 - 2) POSTS SHALL BE HOT DIP GALVANIZED ACCORDING TO CSA G164 AFTER FABRICATION
 - 3) POSTS SHALL BE VERTICAL. ALL EXPOSED CORNERS SHALL BE GROUND SMOOTH.
 - 4) WELDING SHALL BE ACCORDING TO CSA W59
 - 5) ALL JOINTS SHALL BE SHOP WELDED
 - 6) PIPE SHALL BE ACCORDING TO ASTM A 53
 - 7) LOCATE RACK A MINIMUM OF 0.9 m FROM MAJOR OBSTACLES PARALLEL TO RACK
 - 8) LOCATE RACK A MINIMUM OF 2.5 m FROM MAJOR OBSTACLES (EG. WALLS) ON AT LEAST ONE SIDE TO ALLOW EASY ACCESS FOR CYCLIST
 - 9) LOCATE RACK A MINIMUM OF 1.2 m FROM OBSTACLES PERPENDICULAR TO RACK ON SIDES NOT ACCESSED BY CYCLIST

ANCHORING SURFACE OPTIONS

- 10) EMBED IN CONCRETE
- 11) ANCHOR TO EXISTING CONCRETE
- 12) POUR CONCRETE PAD AND ANCHOR TO PAD
- 13) INSTALL PAVING STONE AROUND CONCRETE BASE BLOCK (IN-GROUND) OR OVER CONCRETE PAD (SURFACE MOUNT)



SECTION A-A

ALL DIMENSIONS ARE IN MILLIMETERS UNLESS OTHERWISE STATED

		ENGINEERING STANDARDS	
POST AND RING BIKE RACK DETAILS AND SECTIONS			
TITLE	CITY OF Thunder Bay Superior by Nature ENGINEERING STANDARDS POST AND RING BIKE RACK DETAILS AND SECTIONS		
DWN.	S.G.	DATE	JAN. 2011
REVISED:	JAN. 2018		
SCALE	N. T. S.		
Z:\ENR\Standard Drawings\Std Dwgs\M-115-3.dwg		DWG. NO. M-115-3	
MANAGER, ENGINEERING DIVISION			